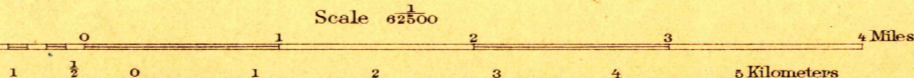


117°30'  
34°00'  
R. U. Goode Geographer in charge.  
Triangulation by A. P. Davis.  
Topography by R. B. Marshall.  
Surveyed in 1897.

U.S.G.S.  
FILE COPY



Contour interval 25 feet.  
Datum is mean sea level.

USGS  
Historical File  
Topographic Division

DIAGRAM OF TOWNSHIP

6	5	4	3	2	1
7	8	9	10	11	12
13	14	15	16	17	18
19	20	21	22	23	24
25	26	27	28	29	30
31	32	33	34	35	36

ENGRAVED FEB. 1900 BY U.S.G.S.  
Edition of Mar. 1901, reprinted May 1911.

JUN 03 1911 3630.

RIVERSIDE, CAL.