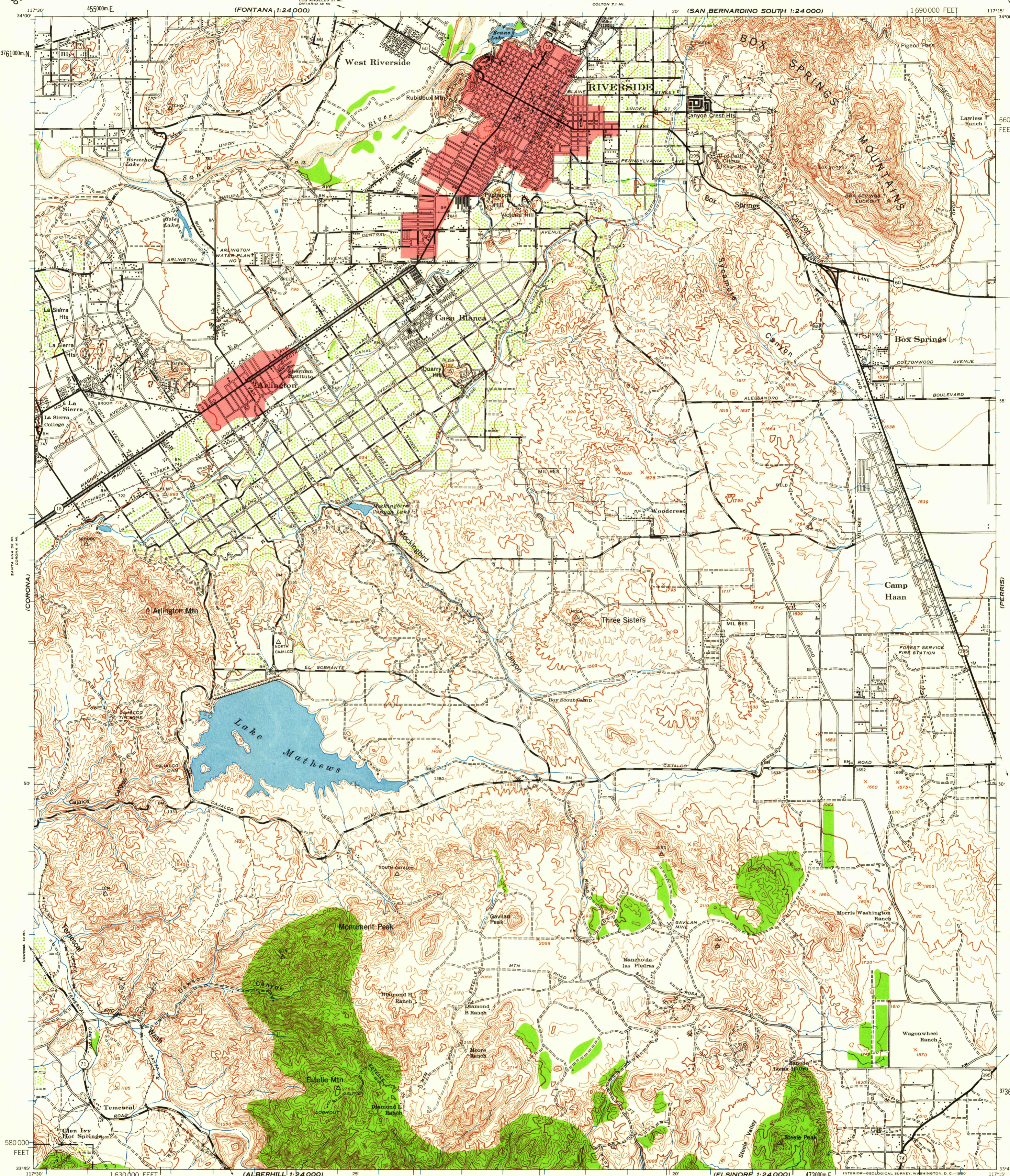


(QUASTI)  
1:24 000

(REDLANDS)



Prepared under the direction of the Chief of Engineers by the Army Map Service (AMS), U. S. Army, Washington, D. C. Scale changed, marginal data revised and Universal Transverse Mercator Grid added, 1947. Copied in 1947 from California, 1:62,500, AMS, Riverside, 1942. Original map compiled by stereophotogrammetric methods for the Army Map Service by the 29th Engineer Battalion, U. S. Army. Horizontal control by USC&GS, Metropolitan Water District of Southern California and the 29th Engineer Battalion, U. S. Army. Vertical control by USC&GS, USGS, Metropolitan Water District of Southern California and the 29th Engineer Battalion, U. S. Army. Aerial photography by U. S. Army Air Force, 1939. Approximate military reservation boundary as of October, 1946.

**LEGEND**

Tint indicates built-up areas in which only landmark buildings are shown.

**ROAD DATA 1942**

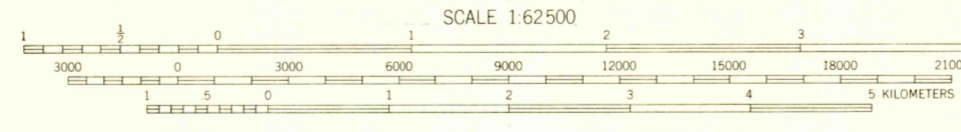
Hard surface, heavy duty road, more than two lanes wide	Loose surface, graded, dry weather road
Hard surface, heavy duty road, two lanes wide, federal route marker	Trail, dirt road
Secondary, hard surface, all weather road	Railroad in street, Carline in street
Two lanes wide, State route marker	

**RAILROADS**

Standard gauge	Single track	Double track	ABANDONED
Narrow gauge	Single track	Double track	Single track
Single track carline	Double track carline		

**BOUNDARIES**

International	Mine	Intermittent lake
State	Horizontal control sta.	Intermittent stream
County (with monument)	Bench mark	Dam
County subdivision	Spot elevation	Rapids; runs
Reservation	Woods	Large rapids and falls
Military reservation	Woods-brushwood	Swamp, marsh
School; Church	Brushwood	Rocky wash at low tide
Cemetery	Orchard	Wharf, pier
Churchyard	Vineyard	Man-made shoreline



CONTOUR INTERVAL 50 FEET  
DATUM IS MEAN SEA LEVEL (1929 ADJ.)

TRANSVERSE MERCATOR PROJECTION  
1927 NORTH AMERICAN DATUM

REPRINTED FROM MILITARY EDITION FOR CIVIL USE  
FOR SALE BY U. S. GEOLOGICAL SURVEY, DENVER 25, COLORADO, OR WASHINGTON 25, D. C.  
A FOLDER DESCRIBING TOPOGRAPHIC MAPS AND SYMBOLS IS AVAILABLE ON REQUEST



USGS  
Historical File  
Topographic Division

5790

DEC 21 1960