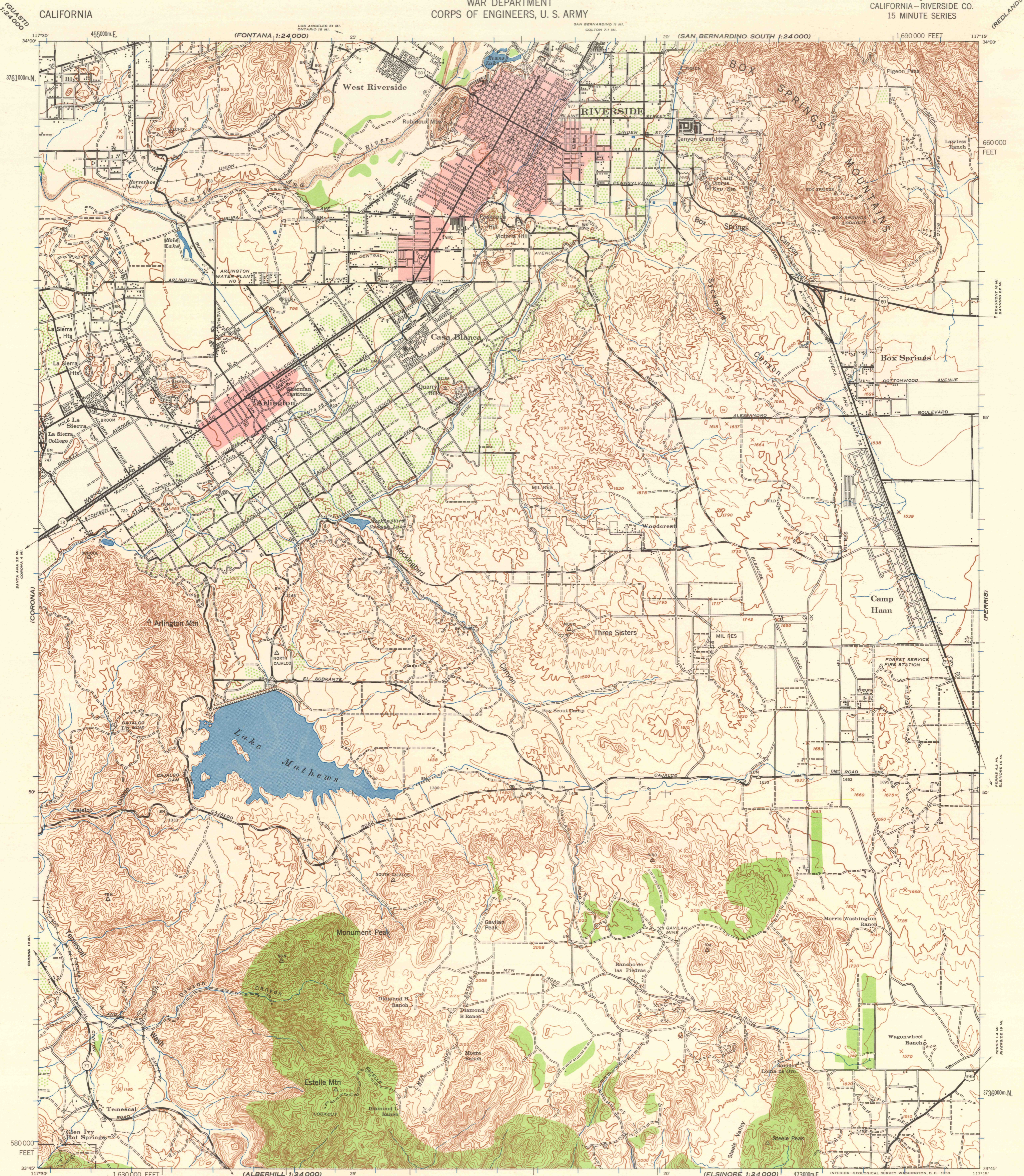


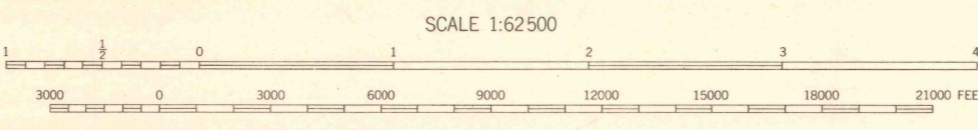
CALIFORNIA



Prepared under the direction of the Chief of Engineers by the Army Map Service (AM), U. S. Army, Washington, D. C. Scale changed, marginal data revised and Universal Transverse Mercator Grid added, 1947. Copied in 1947 from California, 1:62,500, AMS, Riverside, 1942. Original map compiled by stereophotogrammetric methods for the Army Map Service by the 29th Engineer Battalion, U. S. Army. Horizontal control by USC&GS, Metropolitan Water District of Southern California and the 29th Engineer Battalion, U. S. Army. Vertical control by USC&GS, USGS, Metropolitan Water District of Southern California and the 29th Engineer Battalion, U. S. Army. Aerial photography by U. S. Army Air Force, 1939. Approximate military reservation boundary as of October, 1946.

LEGEND

Table with symbols and descriptions for road data, railroads, boundaries, and other features.



SCALE 1:62,500
CONTOUR INTERVAL 50 FEET
DATUM IS MEAN SEA LEVEL (1929 ADJ.)

TRANSVERSE MERCATOR PROJECTION
1927 NORTH AMERICAN DATUM

10,000-FOOT GRID TICKS, CALIFORNIA PLANE COORDINATE SYSTEM, ZONE 6, SHOWN IN BLACK
1000-METER GRID TICKS, UNIVERSAL TRANSVERSE MERCATOR SYSTEM, ZONE 11, SHOWN IN BLUE

REPRINTED FROM MILITARY EDITION FOR CIVIL USE
FOR SALE BY U. S. GEOLOGICAL SURVEY, DENVER 25, COLORADO, OR WASHINGTON 25, D. C.
A FOLDER DESCRIBING TOPOGRAPHIC MAPS AND SYMBOLS IS AVAILABLE ON REQUEST

U.S.G.S.
FILE COPY
TOPOGRAPHIC DIVISION

USGS
Historical File
Topographic Division

RIVERSIDE, CALIFORNIA
N3345-W11715/15
1942

JUN 18 1959

1020