

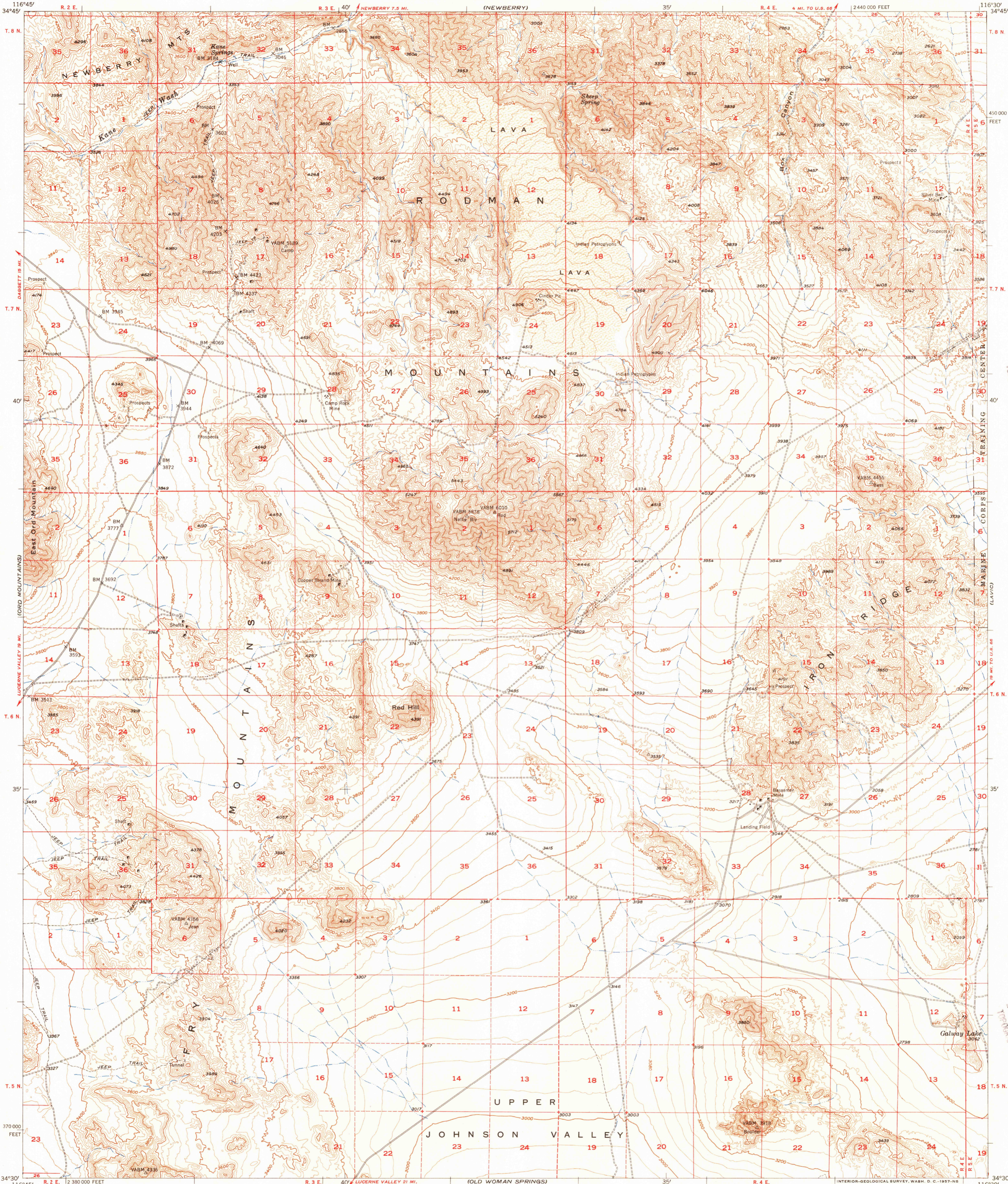
(GAGEETT)

UNITED STATES
DEPARTMENT OF THE INTERIOR
GEOLOGICAL SURVEY

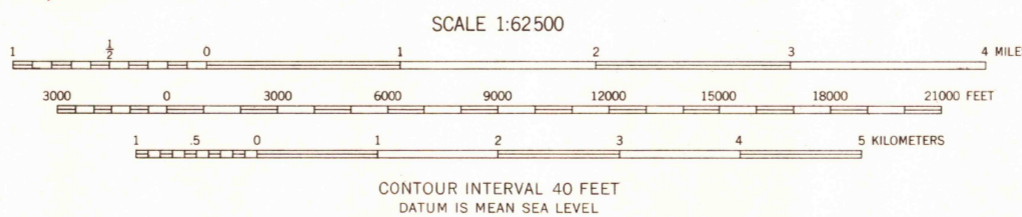
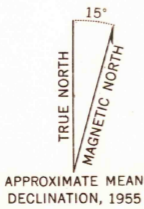
STATE OF CALIFORNIA
GOODWIN J. KNIGHT, GOVERNOR
HARVEY O. BANKS, DIRECTOR OF WATER RESOURCES

RODMAN MOUNTAINS QUADRANGLE
CALIFORNIA—SAN BERNARDINO CO.
15 MINUTE SERIES (TOPOGRAPHIC)

(CADDY MTS)



Mapped, edited, and published by the Geological Survey
Control by USGS and USC&GS
Topography from aerial photographs by Kersh plotter
Aerial photographs taken 1951 and 1952. Field check 1955
Polyconic projection. 1927 North American datum
10,000-foot grid based on California coordinate system, zone 5
Dashed land lines indicate approximate locations



USGS
Historical File
Topographic Division

ROAD CLASSIFICATION	
Heavy-duty	Light-duty
Medium-duty	Unimproved dirt
U.S. Route	State Route



The northeast quarter of this area is also covered by 1:24,000 scale map of the Silver Bell Mine 7.5 minute quadrangle surveyed in 1955
RODMAN MOUNTAINS, CALIF.
N 3430—W 11630/15

THIS MAP COMPLIES WITH NATIONAL MAP ACCURACY STANDARDS
FOR SALE BY U. S. GEOLOGICAL SURVEY, DENVER 2, COLORADO OR WASHINGTON 25, D. C.
A FOLDER DESCRIBING TOPOGRAPHIC MAPS AND SYMBOLS IS AVAILABLE ON REQUEST

1955

U.S. GEOLOGICAL SURVEY
TOPOGRAPHIC DIVISION
FILE COPY

U.S. GEOLOGICAL SURVEY
TOPOGRAPHIC DIVISION
FILE COPY

JAN 23 1955
3165