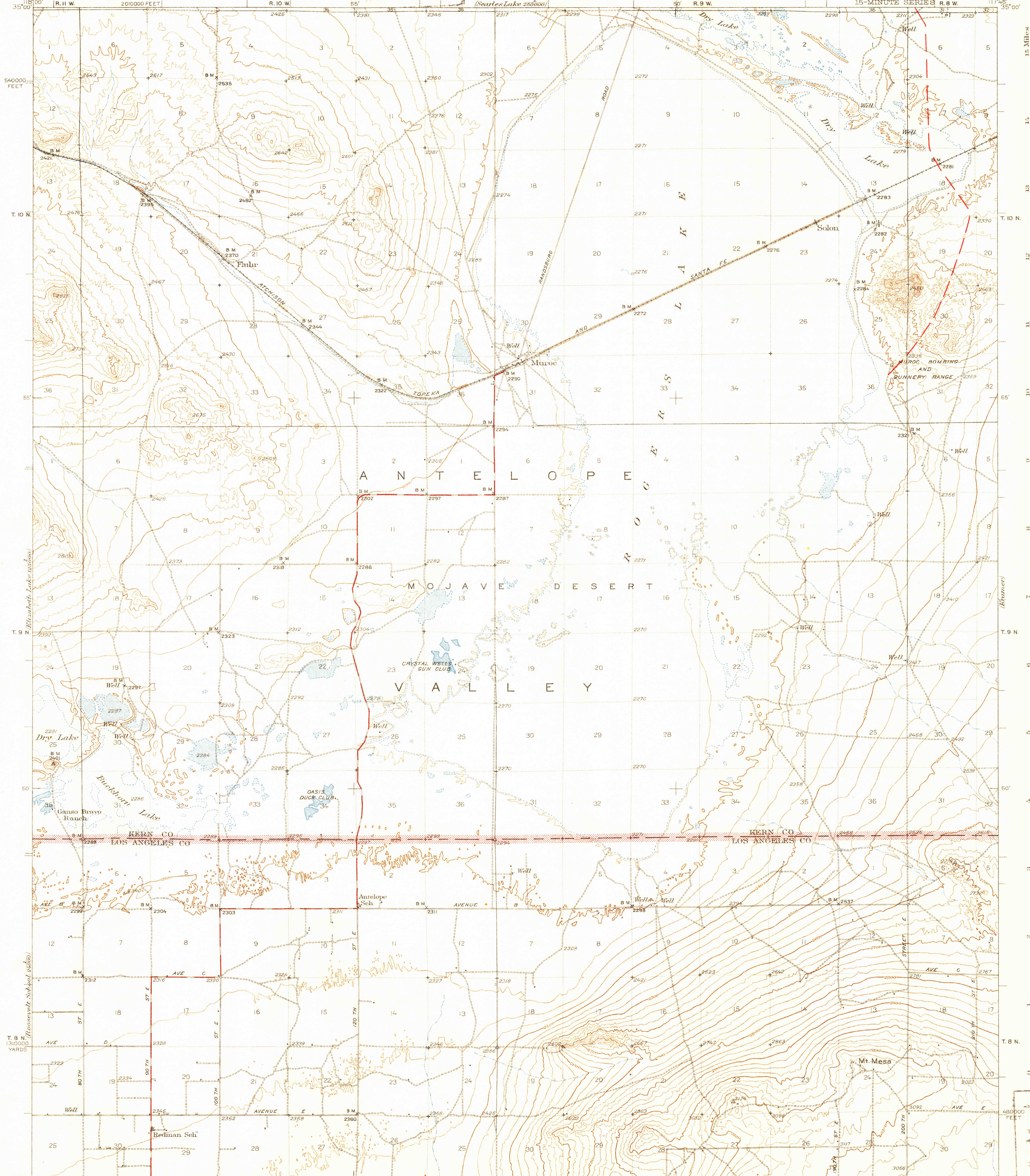


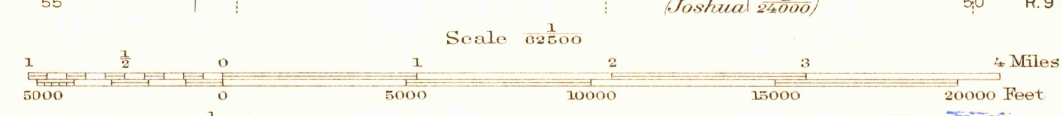
UNITED STATES
DEPARTMENT OF THE INTERIOR
GEOLOGICAL SURVEY

U.S.G.S.
FILE COPY
Topographic and Building

BAKERSFIELD 97 MI CALIFORNIA
MOJAVE 23 MI
ROGERS LAKE QUADRANGLE
15-MINUTE SERIES R.B.W.



Topography by E. P. Davis, W. R. Chenoweth,
C. W. H. Nessler, R. G. Stevenson, and S. C. Kain
Surveyed in 1930-1931 and 1937 ROOSEVELT 4 MI.
LANCASTER (JUNC. U. S. ROUTE NO. 6) 12 MI.



Maps of the Hi Vista, Casa Desierta, and Joshua quadrangles, scale 1:24,000, contour interval 5 feet, from more detailed surveys of the Los Angeles County part of this quadrangle, are available.
Polyconic projection, 1927 North American datum, 5000 yard grid based on U. S. zone system, G 10000 foot grid based on California (5) rectangular coordinate system

USGS
Historical
Topography
U. S. ROUTE 1942
STATE ROUTE

ROGERS LAKE, CALIF.
Edition of 1942

N3445-W1745/15

JUN 23 1949 3345