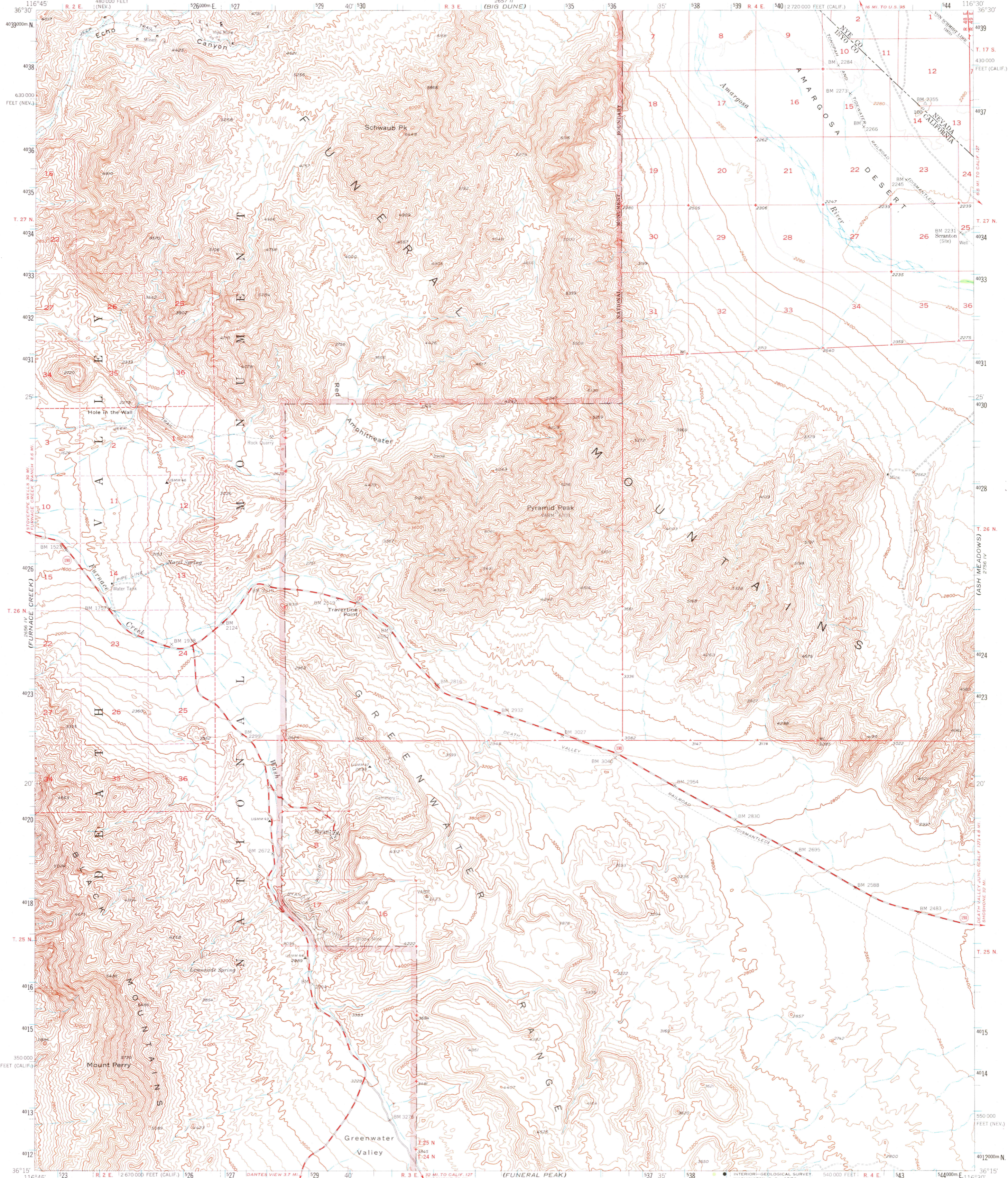
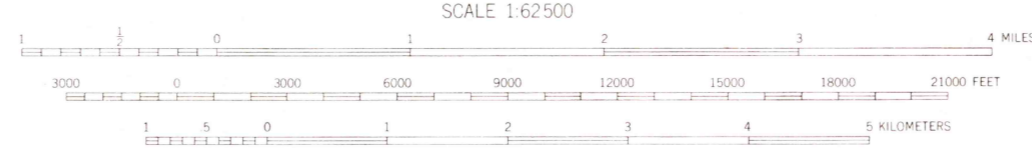
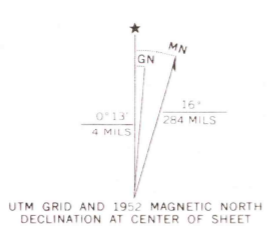


UNITED STATES  
DEPARTMENT OF THE INTERIOR  
GEOLOGICAL SURVEY

RYAN QUADRANGLE  
CALIFORNIA-NEVADA  
15 MINUTE SERIES (TOPOGRAPHIC)



Mapped, edited, and published by the Geological Survey  
Control by USGS and USC&GS  
Topography from aerial photographs by multiple methods  
and by plane-table surveys 1952. Aerial photographs taken 1948  
Polyconic projection. 1927 North American datum  
10,000-foot grids based on California coordinate system, zone 4  
and Nevada coordinate system, central zone  
Dashed land lines indicate approximate locations  
Certain land lines are omitted because of insufficient data  
Unchecked elevations are shown in brown  
1000-meter Universal Transverse Mercator grid ticks,  
zone 11, shown in blue



CONTOUR INTERVAL 80 FEET  
DOTTED LINES REPRESENT HALF-INTERVAL CONTOURS  
DATUM IS MEAN SEA LEVEL

THIS MAP COMPLIES WITH NATIONAL MAP ACCURACY STANDARDS  
FOR SALE BY U. S. GEOLOGICAL SURVEY, DENVER, COLORADO 80225 OR WASHINGTON, D. C. 20242  
A FOLDER DESCRIBING TOPOGRAPHIC MAPS AND SYMBOLS IS AVAILABLE ON REQUEST

ROAD CLASSIFICATION

Heavy-duty	4 LANE 16 LANE	Light-duty
Medium-duty	4 LANE 6 LANE	Unimproved dirt
U. S. Route	State Route	



RYAN, CALIF.-NEV.  
N3615-W11630/15

1952

AMS 2656 I-SERIES V795

USGS  
Historical  
Topographic

AUG 17

522