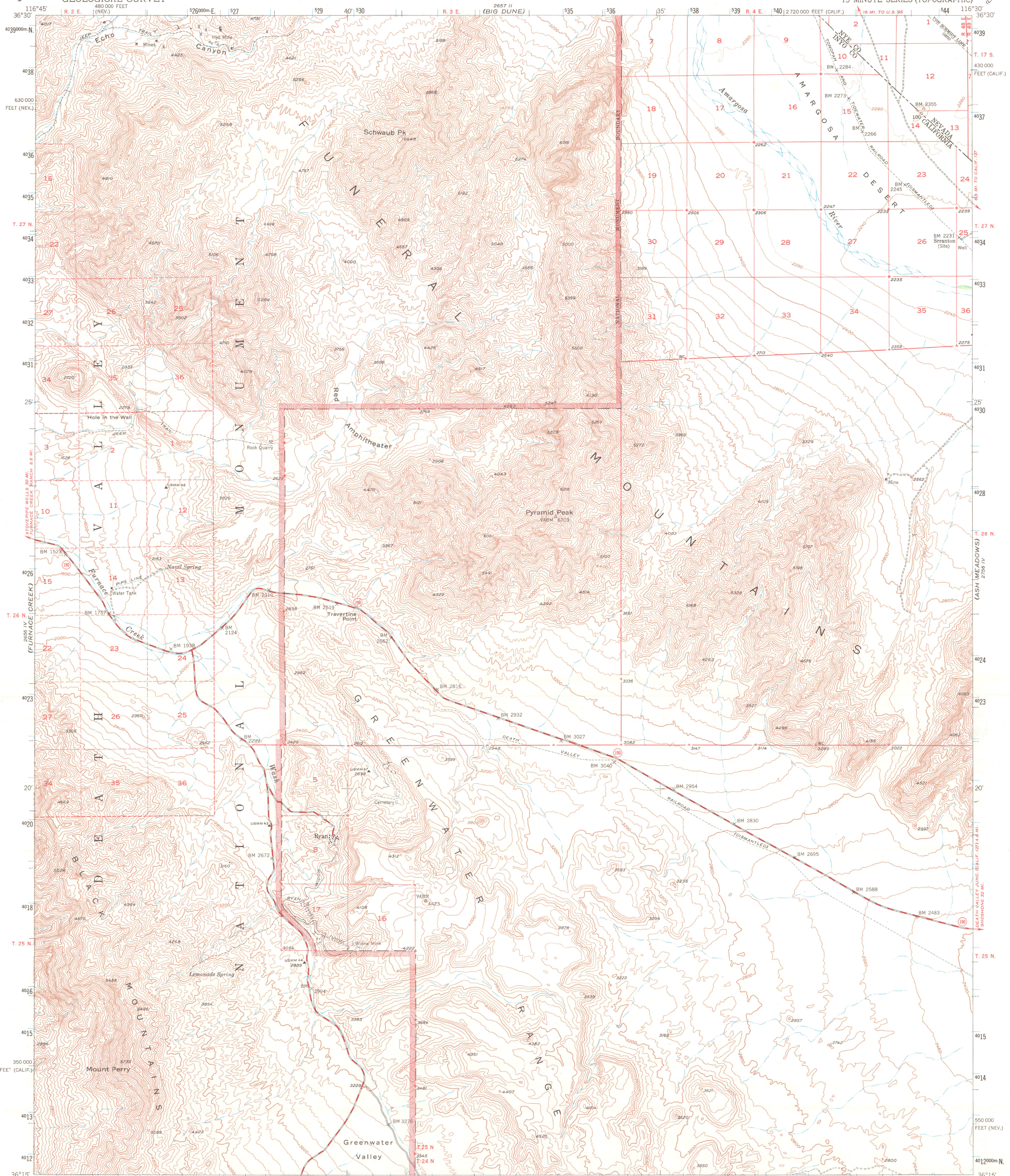
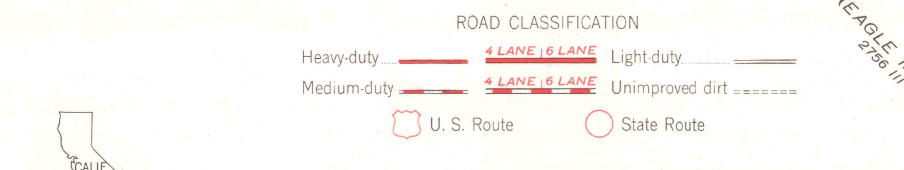
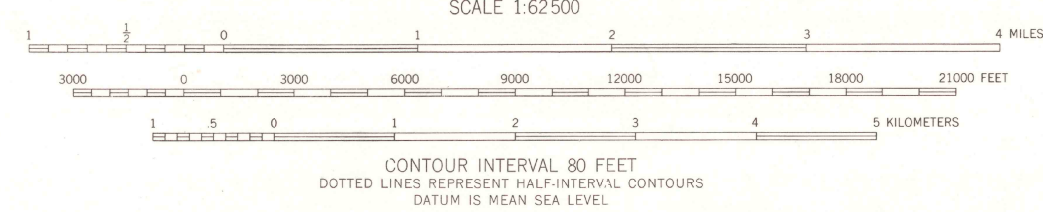
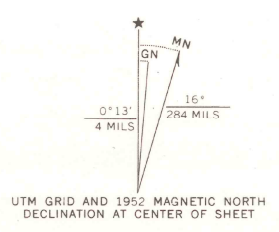


UNITED STATES
DEPARTMENT OF THE INTERIOR
GEOLOGICAL SURVEY

RYAN QUADRANGLE
CALIFORNIA-NEVADA
15 MINUTE SERIES (TOPOGRAPHIC)



Mapped, edited, and published by the Geological Survey
Control by USGS and USC&GS
Topography from aerial photographs by multiplex methods
and by plane-table surveys 1952. Aerial photographs taken 1948
Polyconic projection. 1927 North American datum
10,000-foot grids based on California coordinate system, zone 4
and Nevada coordinate system, central zone
Dashed land lines indicate approximate locations
Certain land lines are omitted because of insufficient data
Unchecked elevations are shown in brown
1000-meter Universal Transverse Mercator grid ticks,
zone 11, shown in blue



THIS MAP COMPLIES WITH NATIONAL MAP ACCURACY STANDARDS
FOR SALE BY U. S. GEOLOGICAL SURVEY, DENVER, COLORADO 80225 OR WASHINGTON, D. C. 20242
A FOLDER DESCRIBING TOPOGRAPHIC MAPS AND SYMBOLS IS AVAILABLE ON REQUEST

RYAN, CALIF.-NEV.
N3615-W11630/15
1952

AMS 2656 I-SERIES V795

APR 25 1984