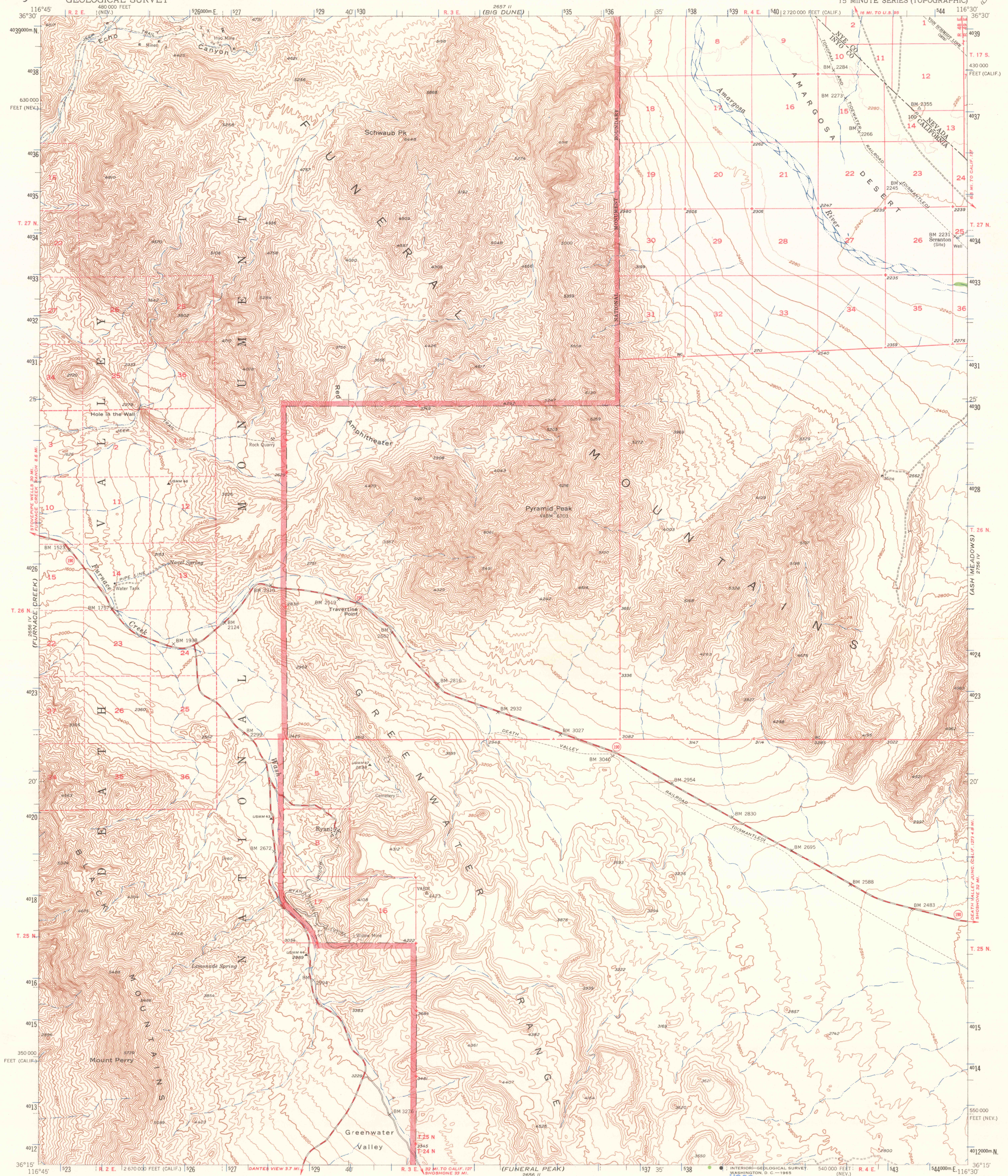
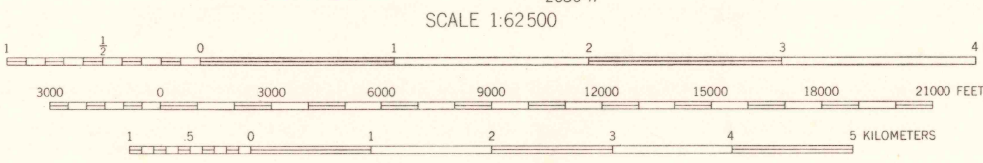
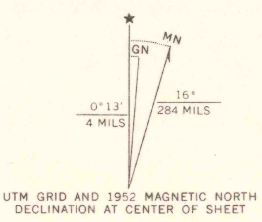


UNITED STATES  
DEPARTMENT OF THE INTERIOR  
GEOLOGICAL SURVEY

RYAN QUADRANGLE  
CALIFORNIA-NEVADA  
15 MINUTE SERIES (TOPOGRAPHIC)



Mapped, edited, and published by the Geological Survey  
Control by USGS and USC&GS  
Topography from aerial photographs by multiplex methods and by plane-table surveys 1952. Aerial photographs taken 1948  
Polyconic projection. 1927 North American datum  
10,000-foot grids based on California coordinate system, zone 4 and Nevada coordinate system, central zone  
Dashed land lines indicate approximate locations  
Certain land lines are omitted because of insufficient data  
Unchecked elevations are shown in brown  
1000-meter Universal Transverse Mercator grid ticks, zone 11, shown in blue



CONTOUR INTERVAL 80 FEET  
DOTTED LINES REPRESENT HALF-INTERVAL CONTOURS  
DATUM IS MEAN SEA LEVEL

THIS MAP COMPLIES WITH NATIONAL MAP ACCURACY STANDARDS  
FOR SALE BY U. S. GEOLOGICAL SURVEY, DENVER, COLORADO 80225 OR WASHINGTON, D. C. 20242  
A FOLDER DESCRIBING TOPOGRAPHIC MAPS AND SYMBOLS IS AVAILABLE ON REQUEST

USGS  
Historical File  
Topographic Division

ROAD CLASSIFICATION  
Heavy-duty 4 LANE 16 LANE Light-duty  
Medium-duty 4 LANE 16 LANE Unimproved dirt  
U.S. Route State Route

U.S.G.S.  
FILE COPY  
TOPOGRAPHIC DIVISION

QUADRANGLE LOCATION

U.S.G.S.  
RYAN, CALIF.-NEV.  
N3615-W11630/15  
1952  
AMS 2656 I-SERIES V795

JUN 28 1965  
3990