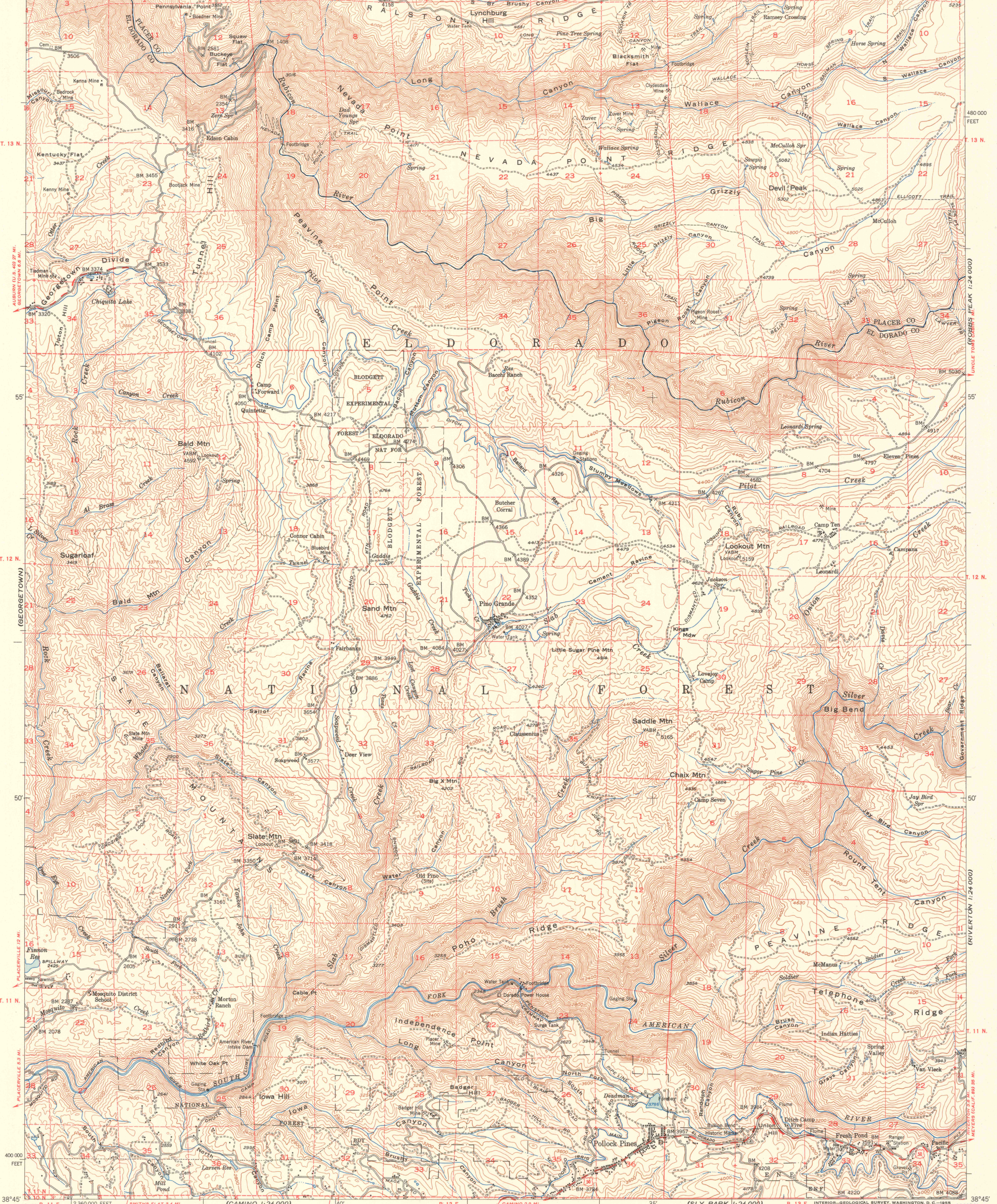
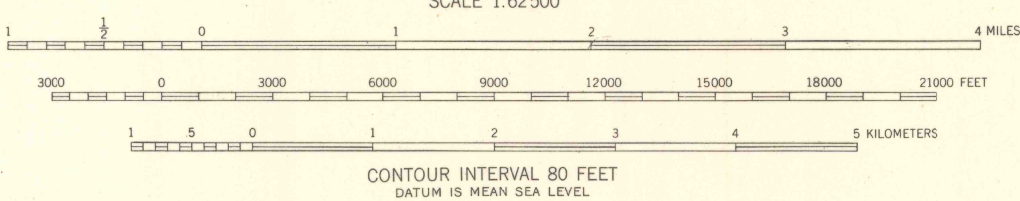
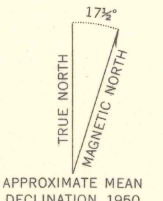


120°45' 39°00' R. 11 E. RALSTON 1.4 MI. (MICHIGAN BLUFF 1:24 000) 40' RALSTON 1.4 MI. R. 12 E. BRUSHY SPRING QUARD STA. 0.9 MI. 35' (GREEK STORE 1:24 000) R. 13 E. 2 420 000 FEET 120°30' 39°00'



Mapped, edited, and published by the Geological Survey  
Control by USGS, USC&GS, and USFS  
Compiled in 1953 from 1:24 000 scale maps of the Devil Peak,  
Tunnel Hill, Slate Mtn., and Pollock Pines 7.5 minute  
quadrangles, surveyed in 1950  
Polyconic projection. 1927 North American datum  
10,000-foot grid based on California coordinate system, zone 2  
Dashed land lines indicate approximate locations  
Certain land lines are omitted because of insufficient data  
Unchecked elevations are shown in brown



ROAD CLASSIFICATION  
Heavy-duty 2 LANE 1 LANE Light-duty 1 LANE 1 LANE  
Medium-duty 2 LANE 1 LANE Unimproved dirt 1 LANE 1 LANE  
U.S. Route State Route



This area is also covered by 1:24 000 scale maps of  
Devil Peak, Tunnel Hill, Slate Mtn., and Pollock Pines  
7.5 minute quadrangles surveyed in 1950.  
SADDLE MOUNTAIN, CALIF.  
N3845-W12030/15

FILE COPY  
MAP INFORMATION OFFICE  
GEOLOGICAL SURVEY