

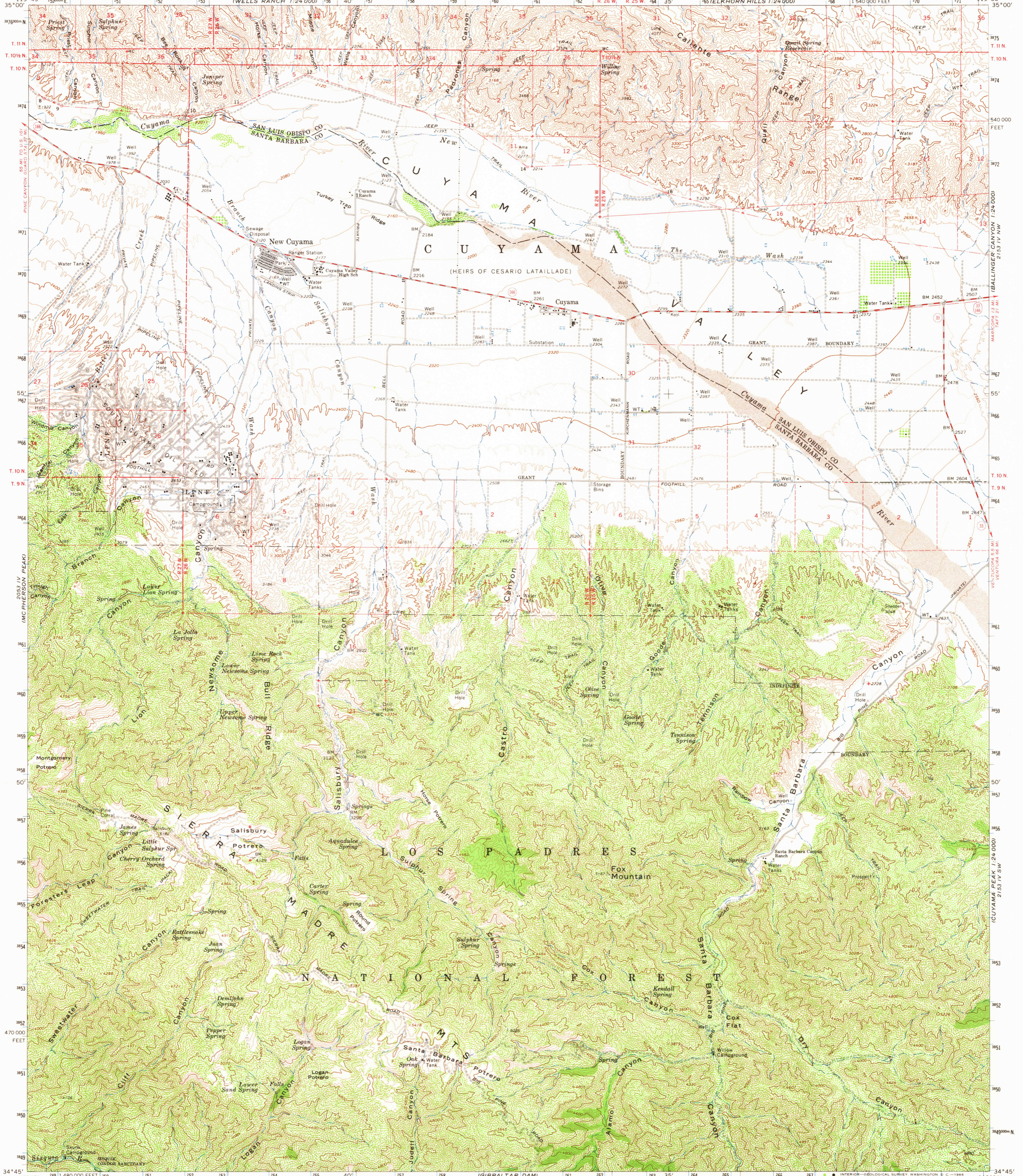
119° 45' W
34° 45' N

UNITED STATES
DEPARTMENT OF THE INTERIOR
GEOLOGICAL SURVEY

STATE OF CALIFORNIA
DEPARTMENT OF WATER RESOURCES

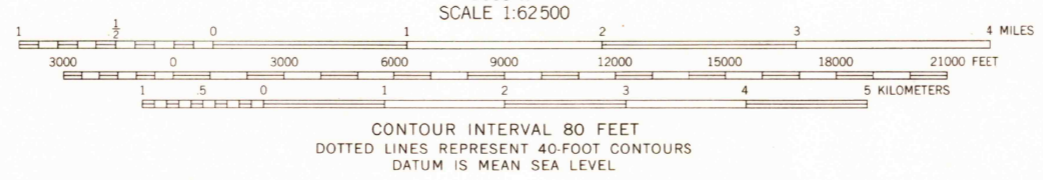
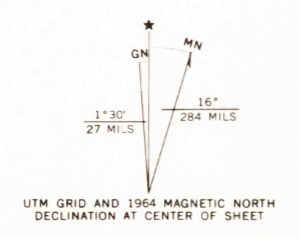
SALISBURY CANYON QUADRANGLE
CALIFORNIA
15 MINUTE SERIES (TOPOGRAPHIC)

2550 III SW
MAPIC 0201
1:24,000



(SAN RAFAEL MTN)
2053 III

Mapped, edited, and published by the Geological Survey
Control by USGS, USC&GS, and U. S. Forest Service
Compiled in 1965 from 1:24 000-scale maps dated 1964
Polyconic projection. 1927 North American datum
10,000-foot grid based on California coordinate system, zone 5
1000-meter Universal Transverse Mercator grid ticks,
zone 11, shown in blue
Certain land lines are omitted because of insufficient data



USGS
Historical File
Topographic Division

ROAD CLASSIFICATION
Medium-duty — Light-duty
Unimproved dirt
State Route



U.S.G.S.
SALISBURY CANYON, CALIF.
N3445—W11930/15
1964
AMS 2053 I—SERIES V795

(RANCHO NUEVO CREEK)
2550 III SW
MAPIC 0201
1:24,000

THIS MAP COMPLIES WITH NATIONAL MAP ACCURACY STANDARDS
FOR SALE BY U. S. GEOLOGICAL SURVEY, DENVER, COLORADO 80225, OR WASHINGTON, D. C. 20242
A FOLDER DESCRIBING TOPOGRAPHIC MAPS AND SYMBOLS IS AVAILABLE ON REQUEST

FILE COPY
TOPOGRAPHIC DIVISION

3460

MAR 1964