

(ALPINE BUTTE)

CALIFORNIA
SAN ANTONIO QUADRANGLE
GRID ZONE "G"

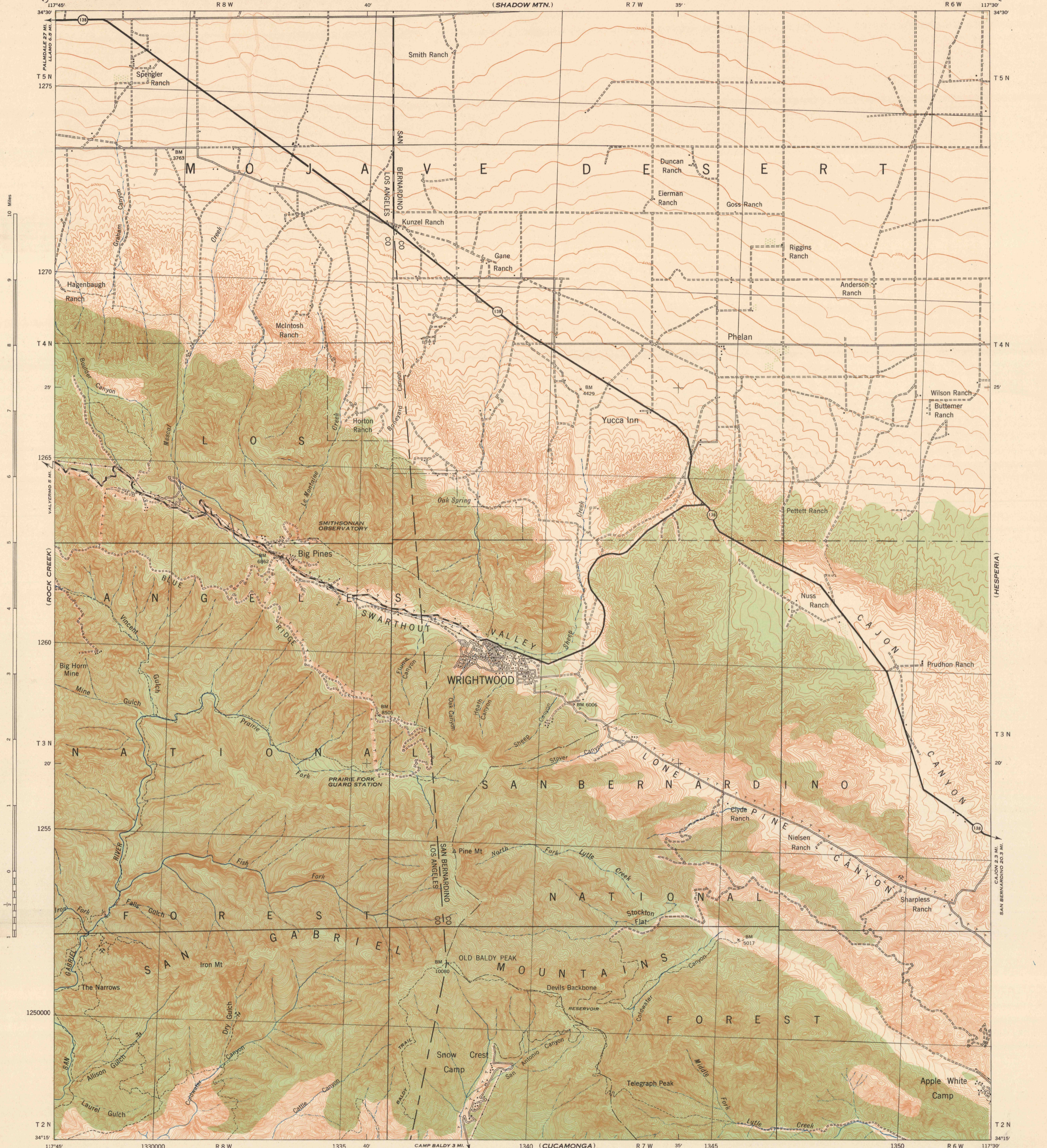
HONOLULU OIL CORPORATION
GEOLOGICAL DEPARTMENT
BAKERSFIELD OFFICE

WAR DEPARTMENT
CORPS OF ENGINEERS, U. S. ARMY

Advance edition
Subject to correction

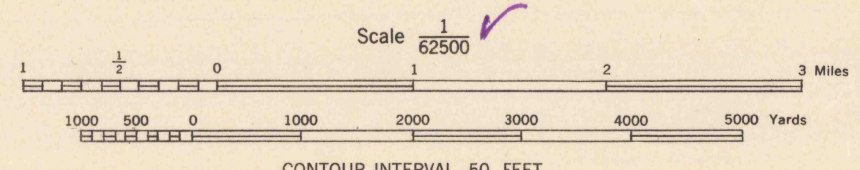
CALIFORNIA
SAN ANTONIO QUADRANGLE
GRID ZONE "G"

(VICTORYVILLE)



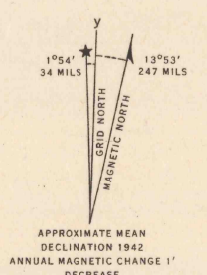
Work Projects Administration Project.
Prepared under the direction of the Chief of Engineers, U. S. Army.
Control by U. S. Geological Survey.
Topography by U. S. Geological Survey.
Photography by Air Corps, U. S. Army, 1940-41.
Surveyed by U. S. Geological Survey, 1899-1900.
Planimetric detail revised as a Federal W.P.A. Project, 1940-41, under
supervision of 29th Engineers, U. S. Army.
Polyconic Projection, North American Datum 1927.

ROAD CLASSIFICATIONS
Dependable hard surface, heavy duty road.
Secondary, hard surface, all weather road.
Loose surface graded, 60 weather road.
Unimproved road.
U. S. Route 754
State Route 154
3 LANE 1 1/2 LANE



CONTOUR INTERVAL 50 FEET
DATUM IS MEAN SEA LEVEL

FIVE THOUSAND YARD GRID COMPUTED FROM GRID SYSTEM FOR PROGRESSIVE MAPS
IN THE U. S. ZONE G, U. S. C. & G. S. SPECIAL PUBLICATION NO. 58
THE LAST THREE DIGITS OF THE GRID NUMBERS ARE OMITTED
NOTE: OFFICERS USING THIS MAP WILL MARK HEREON CORRECTIONS AND ADDITIONS WHICH COME
TO THEIR ATTENTION AND SHALL DIRECT TO "THE CHIEF OF ENGINEERS, WASHINGTON, D. C."



ARMY MAP SERVICE, U. S. ARMY WASHINGTON D. C. 101565
1942

864 B
SAN ANTONIO, CALIF.
N3415-W11730/15

(SAN BERNARDINO)