

(FRED MOUNTAIN)
1:24,000

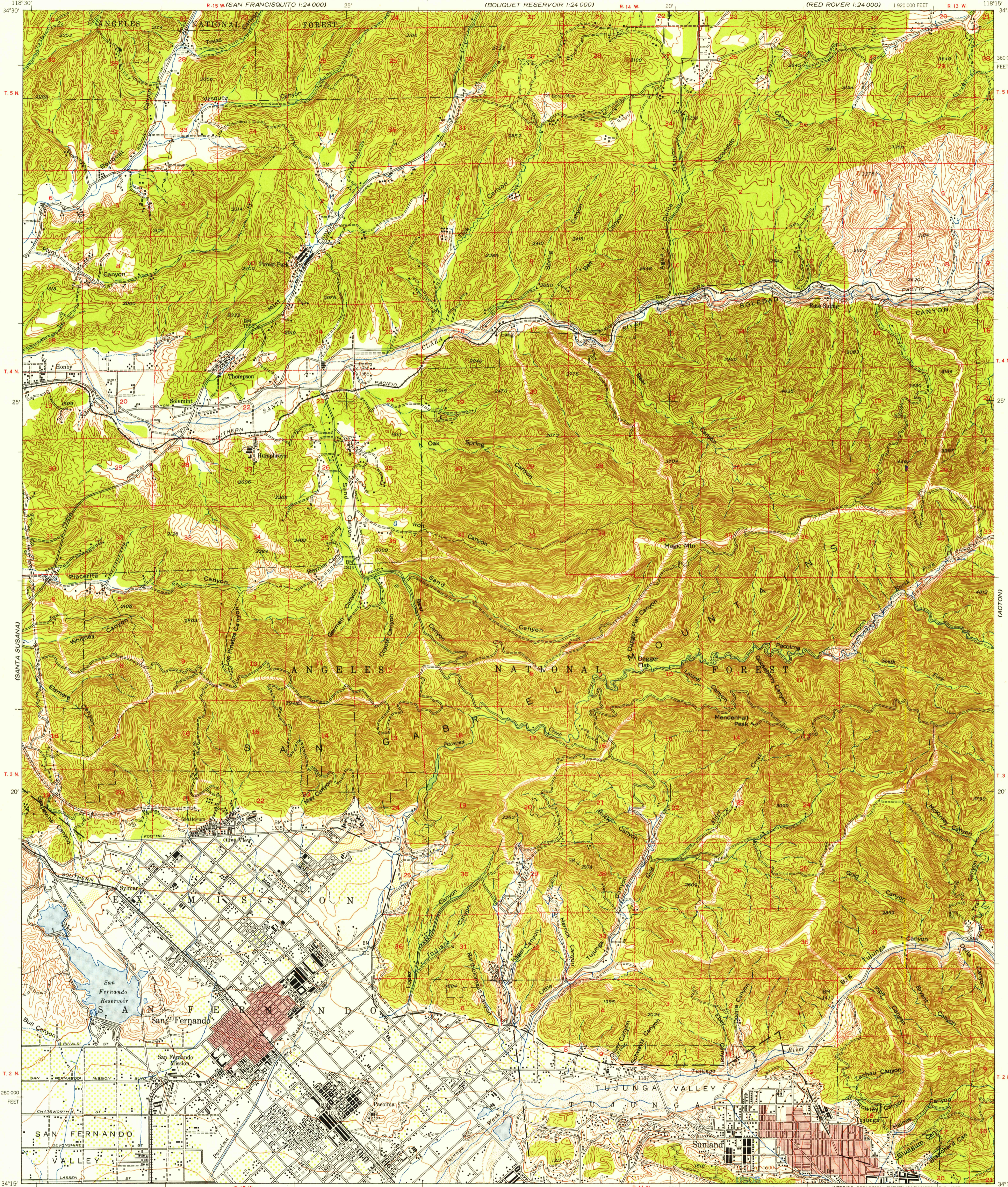
UNITED STATES
DEPARTMENT OF THE INTERIOR
GEOLOGICAL SURVEY

UNITED STATES
DEPARTMENT OF THE ARMY
CORPS OF ENGINEERS

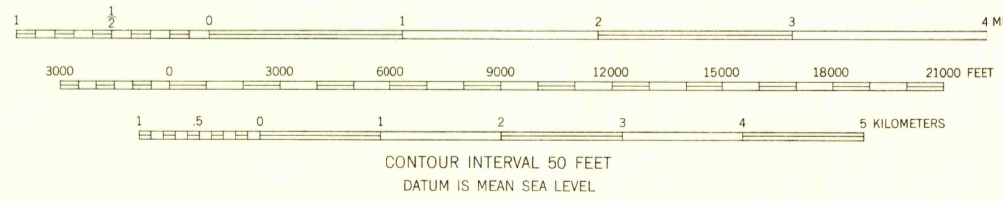
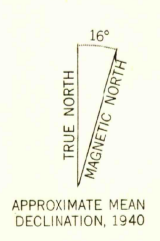
U.S.G.S.
FILE COPY
TOPOGRAPHIC DIVISION

SAN FERNANDO QUADRANGLE
CALIFORNIA—LOS ANGELES CO.
15 MINUTE SERIES (TOPOGRAPHIC)

(RED ROVER)
1:24,000



1:850,000 FEET
Mapped by the Geological Survey
Revised by the Army Map Service
Published for civil use by the Geological Survey
Control by USGS
Topography by plane-table methods 1897
Planimetric detail revised from aerial photographs taken 1938-1940
Polyconic projection. 1927 North American datum
10,000-foot grid based on California coordinate system, zone 5
Dashed land lines indicate approximate location
No distinction is made between dwellings, barns,
commercial and industrial buildings



Historical File
Topographic Division

ROAD CLASSIFICATION 1944
Heavy-duty ——— Light-duty ———
Medium-duty ——— Unimproved dirt ———
U. S. Route ——— State Route ———



QUADRANGLE LOCATION

U.S.G.S. SAN FERNANDO, CALIF.
FILE COPY
TOPOGRAPHIC DIVISION
N 3415—W 11815/15
1940

FOR SALE BY U.S. GEOLOGICAL SURVEY, FEDERAL CENTER, DENVER, COLORADO OR WASHINGTON 25, D. C.
A FOLDER DESCRIBING TOPOGRAPHIC MAPS AND SYMBOLS IS AVAILABLE ON REQUEST

DEC 12 1956
206