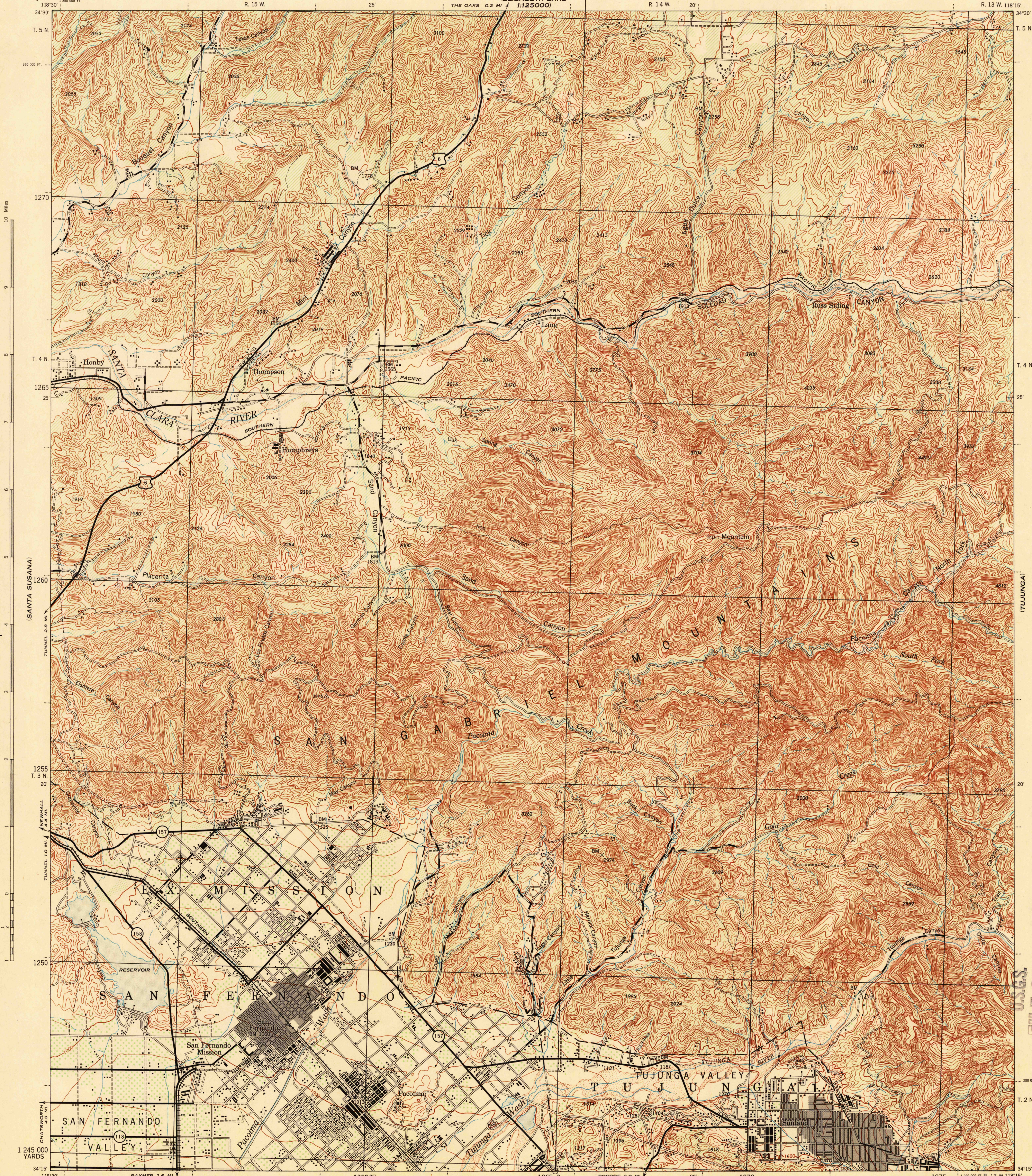


THE OAKS 0.2 MI 1:125000

ELIZABETH LAKE
1:125000

ELIZABETH LAKE
1:125,000



Scale 1:62,500

Scale 1:62,500
1 2 3 Miles
1000 500 0 1000 2000 3000 4000 5000 Yards

CONTOUR INTERVAL 50 FEET
DATUM IS MEAN SEA LEVEL

FIVE THOUSAND YARD GRID COMPUTED FROM GRID SYSTEM FOR PROGRESSIVE MAPS IN THE U. S. ZONE 10 U. S. C. & G. SPECIAL PUBLICATION NO. 59
THE LAST THREE DIGITS OF THE GRID NUMBERS ARE OMITTED
CALIFORNIA STATE GRID ZONE 5 IS INDICATED BY DOTTED TICKS OUTSIDE THE NEAT LINE AT 10,000 FOOT INTERVALS

NOTE: OFFICERS USING THIS MAP WILL MARK HEREON CORRECTIONS AND ADDITIONS WHICH COME TO THEIR ATTENTION AND MAIL DIRECT TO THE CHIEF OF ENGINEERS, WASHINGTON, D. C.

ROAD CLASSIFICATION 1944
Dependable hard surface: ————
Minority road: ————
Secondary hard surface: ————
All weather road: ————
More than two lanes indicated by note along road with tick at point of change.

Loss surface graded: ————
Dry weather road: ————
U. S. Route 160
State Route 30
3 LANE 4 LANE

APPROXIMATE MEAN DECLINATION 1944 FOR CENTER OF SHEET
ANNUAL MAGNETIC CHANGE 1 DEGREE DECREASE
Use diagram only to obtain numerical values.
To determine magnetic north line, connect the point "M" on the north edge of the map with the value of the angle between GRID NORTH and MAGNETIC NORTH, as plotted on the degree scale at the north edge of the map.

USGS Historical File Topographic Division

LEGEND
BRUSH

SAN FERNANDO, CALIFORNIA
N3415-W11815/15