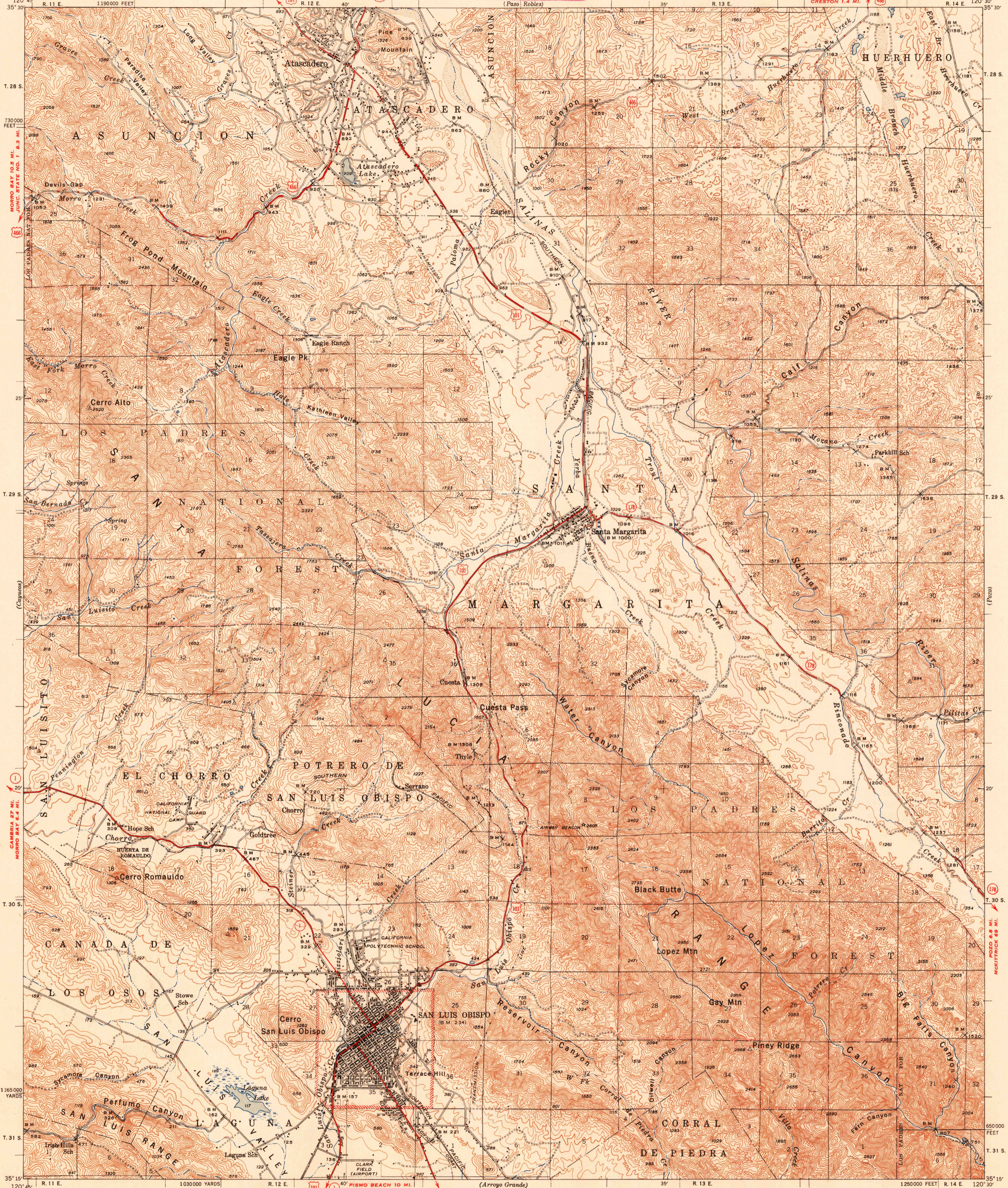


PASO ROBLES 9.7 MI.
TEMPLETON 4 MI.

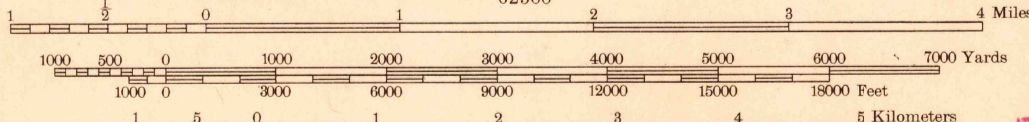
U. S. G. S.
FILE COPY
Inspection and Editing.

SHANDON 12 MI.
CRESTON 1.4 MI.



Topography by C. A. Ecklund, C. N. Mortenson,
T. F. Murphy, C. C. Cooper, P. C. Erickson,
T. J. Nelson, J. E. Mundine, F. M. Partridge,
and G. L. Renoud
Surveyed in 1939

Scale 62500
PISMO BEACH 10 MI.
SANTA MARIA 25 MI.
EDNA 3.8 MI.
ARROYO GRANDE 10.5 MI.
Scale 62500



Contour interval 50 feet
Datum is mean sea level

ROAD CLASSIFICATION
1947
Dependable hard-surface
Heavy-duty road
Secondary hard-surface
all weather road
More than two lanes indicated along road with tick at point of change

ROAD CLASSIFICATION
1947
Dry weather roads
Loose-surface graded
Unsurfaced, graded
Dirt road
U. S. Route
State Route

TRUE NORTH
MAGNETIC NORTH
APPROXIMATE MEAN
DECLINATION, 1939

USGS
Historical File
Topographic Division

Polyconic projection. 1927 North American datum
5000 yard grid based on U. S. zone system, G
10000 foot grid based on California (5)
rectangular coordinate system

SAN LUIS OBISPO, CALIF.
N3515-W12030/15
Edition of 1942
reprinted 1948

U. S. G. S.
FILE COPY
Inspection and Editing.