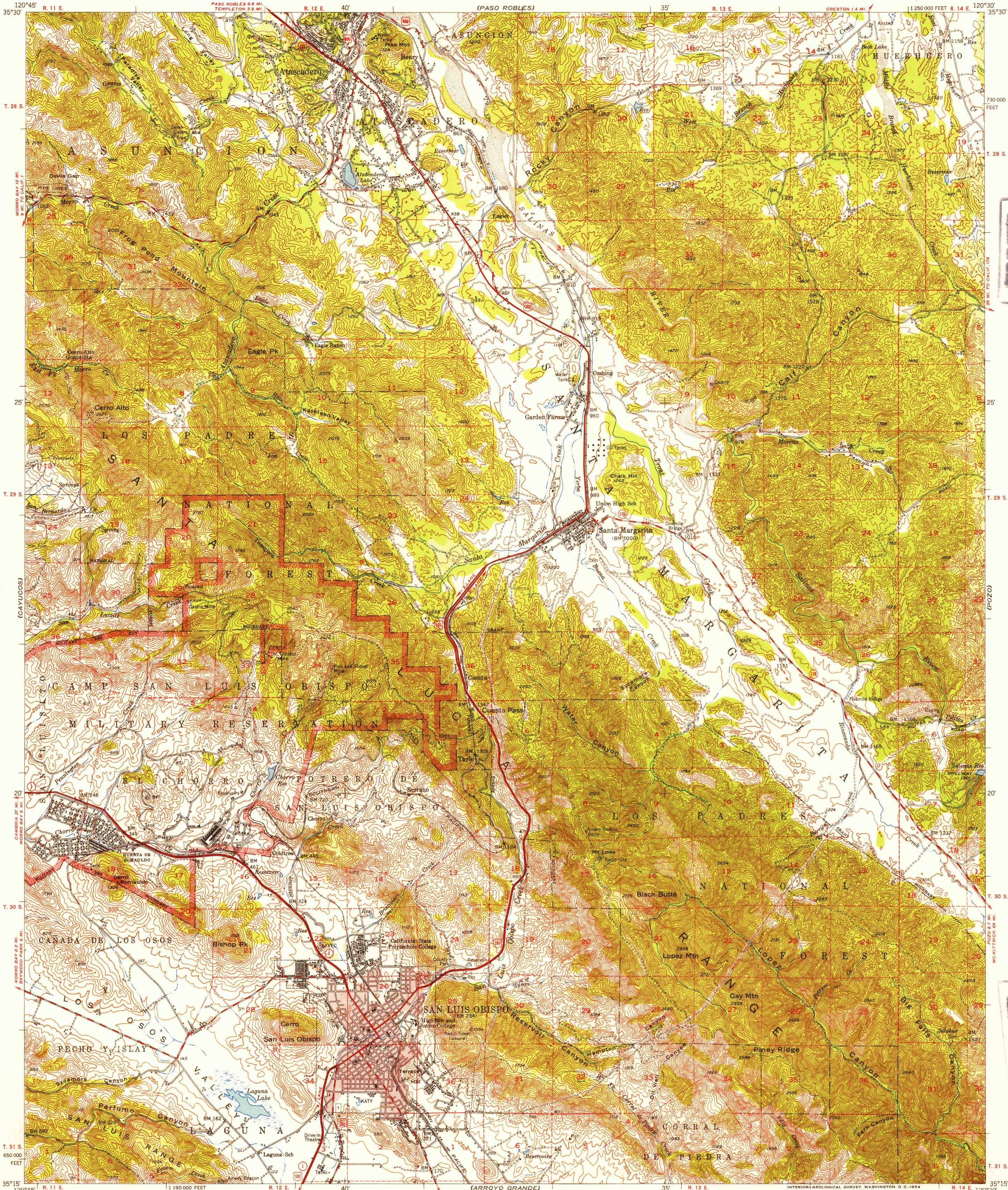


(ADELAIDE)

UNITED STATES
DEPARTMENT OF THE INTERIOR
GEOLOGICAL SURVEY

SAN LUIS OBISPO QUADRANGLE
CALIFORNIA-SAN LUIS OBISPO CO.
15 MINUTE SERIES (TOPOGRAPHIC)

(SHEDD CANYON)
1:31 680

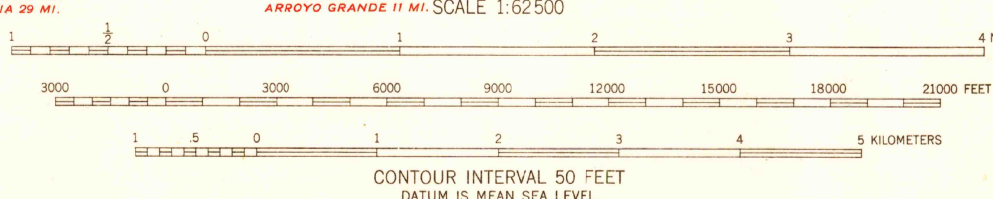


FILE COPY

FILE COPY

Maped, edited, and published by the Geological Survey
Control by USGS and USC&GS
Topography by plane-table surveys 1939
Culture revision and field check 1952
Polyconic projection. 1927 North American datum
10,000-foot grid based on California coordinate system, zone 5
Red tint indicates area in which only
landmark buildings are shown
Dashed land lines indicate approximate locations

TRUE NORTH
MAGNETIC NORTH
APPROXIMATE MEAN
DECLINATION, 1952



USGS
Historical File
Topographic Division

ROAD CLASSIFICATION
Heavy-duty 4 LANE 16 LANE Light-duty 4 LANE 16 LANE
Medium-duty 4 LANE 16 LANE Unimproved dirt 4 LANE 16 LANE
U. S. Route State Route



SAN LUIS OBISPO, CALIF.
N 3515-W 12030/15

1952 MAR 4 1954

FOR SALE BY U. S. GEOLOGICAL SURVEY, FEDERAL CENTER, DENVER, COLORADO OR WASHINGTON 25, D. C.
A FOLDER DESCRIBING TOPOGRAPHIC MAPS AND SYMBOLS IS AVAILABLE ON REQUEST

4555