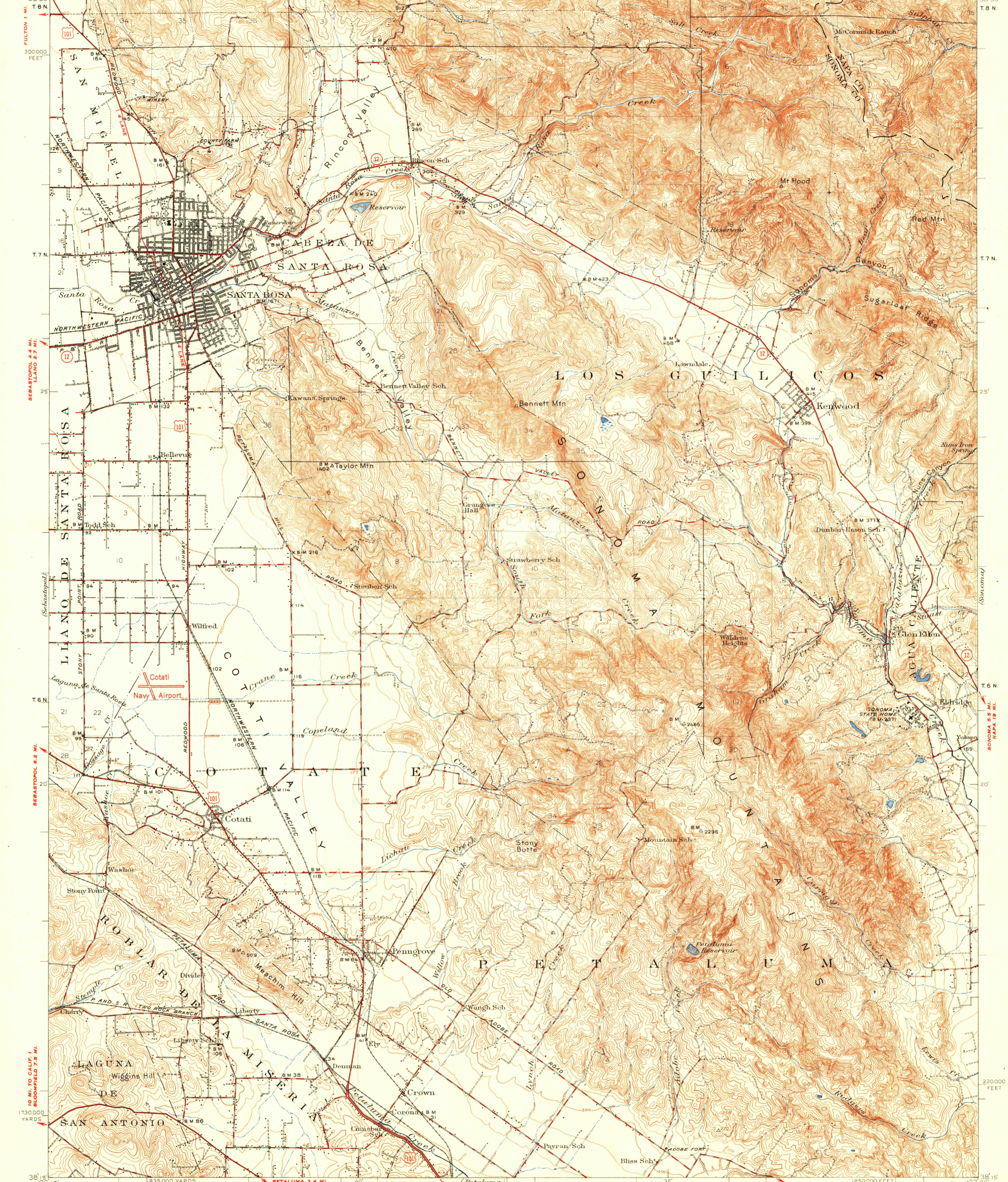


U.S.G.S. FILE COPY
Inspection and Mapping

HEALDSBURG 11 MI. CALISTOGA 18 MI. MARK WEST SPRINGS 4.7 MI. WINDSOR 5.1 MI. UNITED STATES DEPARTMENT OF THE INTERIOR GEOLOGICAL SURVEY
UNIVERSITY OF CALIFORNIA COLLEGE OF AGRICULTURE AND EXPERIMENT STATION DIVISION OF SOIL TECHNOLOGY (Calistoga)
UNITED STATES DEPARTMENT OF THE ARMY CORPS OF ENGINEERS
CALIFORNIA SANTA ROSA QUADRANGLE 15-MINUTE SERIES R.6 W. 122° 30'



Topography by J.P. Harrison, B.A. Jenkins, and A.J. Ogle
Surveyed in 1914
Revised in 1942 by E.P. Davis

ROAD CLASSIFICATION
HARD-SURFACE ALL WEATHER ROADS DRY WEATHER ROADS
Heavy-duty 4 LANE LANE Improved dirt
Medium-duty 4 LANE LANE Unimproved dirt
Loose-surface, graded, or narrow hard-surface

U.S. Route State Route

Scale 1:62,500
1 2 3 4 Miles
1000 2000 3000 4000 5000 6000 7000 Yards
1000 2000 3000 4000 5000 6000 7000 Feet
1 2 3 4 5 Kilometers

Contour interval 25 feet
Datum is mean sea level

6.9 MI. TO CALIF. 12 SONOMA 9.7 MI.
USGS Historical File Topographic Division

SANTA ROSA, CALIF.
Edition of 1944
reprinted 1951
N3815-W12230/15

FOR SALE BY U.S. GEOLOGICAL SURVEY, FEDERAL CENTER, DENVER, COLORADO OR WASHINGTON 25, D.C.
A FOLDER DESCRIBING TOPOGRAPHIC MAPS AND SYMBOLS IS AVAILABLE ON REQUEST

U.S.G.S. FILE COPY
Inspection and Mapping

MAR 12 1951 2515