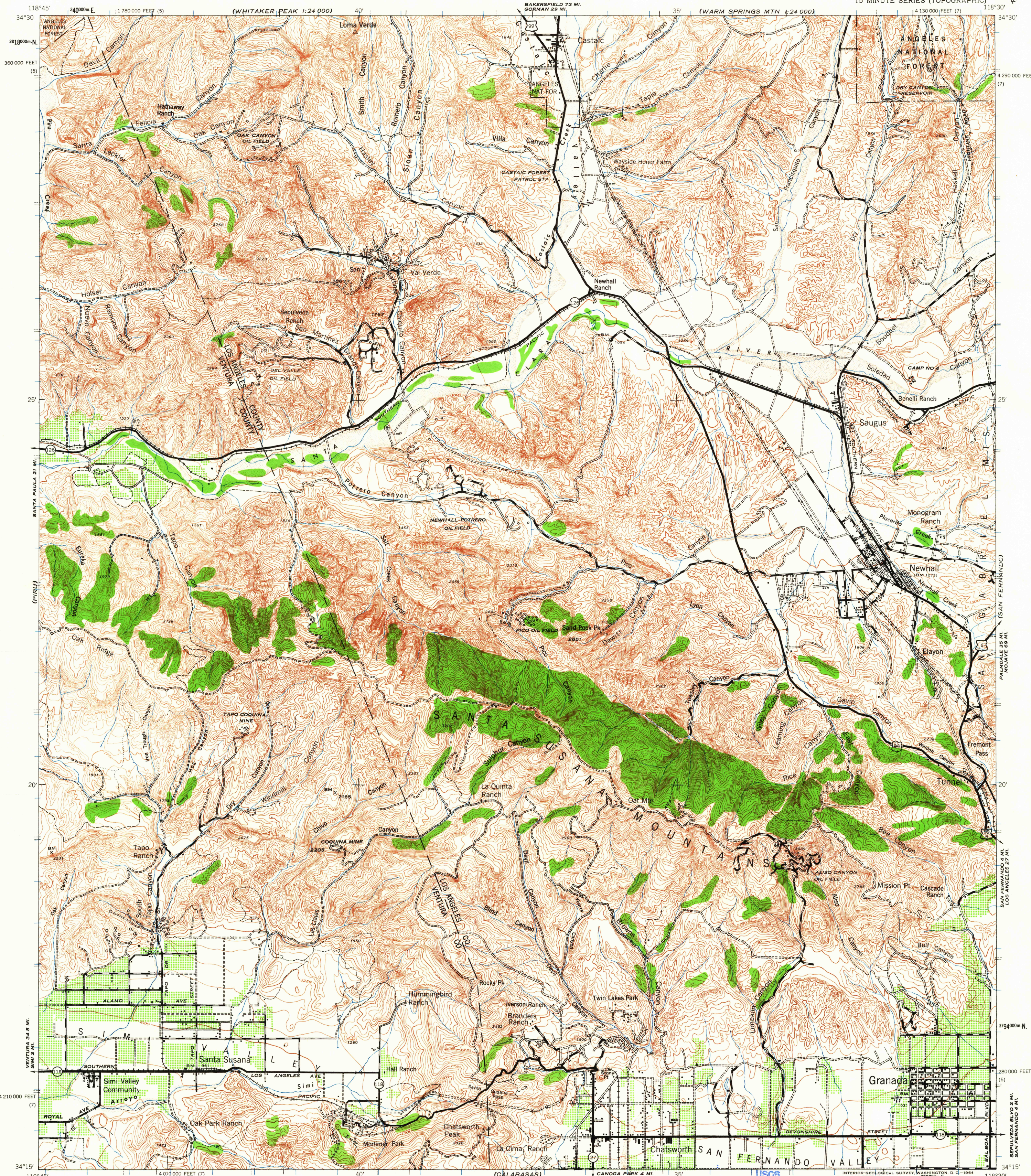


OSBLESTONE MTN
1:24 000

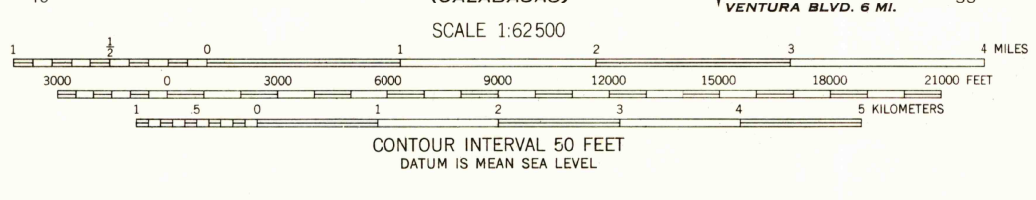
BOUQUET RESERVOIR

WAR DEPARTMENT
CORPS OF ENGINEERS, U.S. ARMY

SANTA SUSANA QUADRANGLE
CALIFORNIA
15 MINUTE SERIES (TOPOGRAPHIC)



Prepared under the direction of the Chief of Engineers, U. S. Army, 1941.
 Horizontal Control by U. S. Coast and Geodetic Survey.
 Topography by U. S. Geological Survey, 1900.
 Photography by Air Corps, U. S. Army, 1938.
 Planimetric detail revised from K-3B (single lens) aerial photographs
 as a Federal W.P.A. project under the supervision of the
 29th Engineers, U. S. Army, 1940-41.
 Polyconic Projection, North American 1927 Datum



USGS
 Historical File
 Topographic Edition

ROAD CLASSIFICATION
 Heavy-duty ——— Light-duty ———
 Medium-duty ——— Unimproved dirt ———

U. S. Route State Route

This area also covered by 7.5-minute, 1:24,000-scale maps: Newhall 1952, Val Verde 1952, Santa Susana 1951, and Ot Mountain 1952

REPRINTED FROM MILITARY EDITION FOR CIVIL USE
 FOR SALE BY U. S. GEOLOGICAL SURVEY, DENVER 25, COLORADO OR WASHINGTON 25, D. C.
 A FOLDER DESCRIBING TOPOGRAPHIC MAPS AND SYMBOLS IS AVAILABLE ON REQUEST

SANTA SUSANA, CALIF.
 N3415—W11830/15
 1941

TRIUNFO PASS

1:24 000
(VAN NUYS)

DEC - 6 1963

1710