

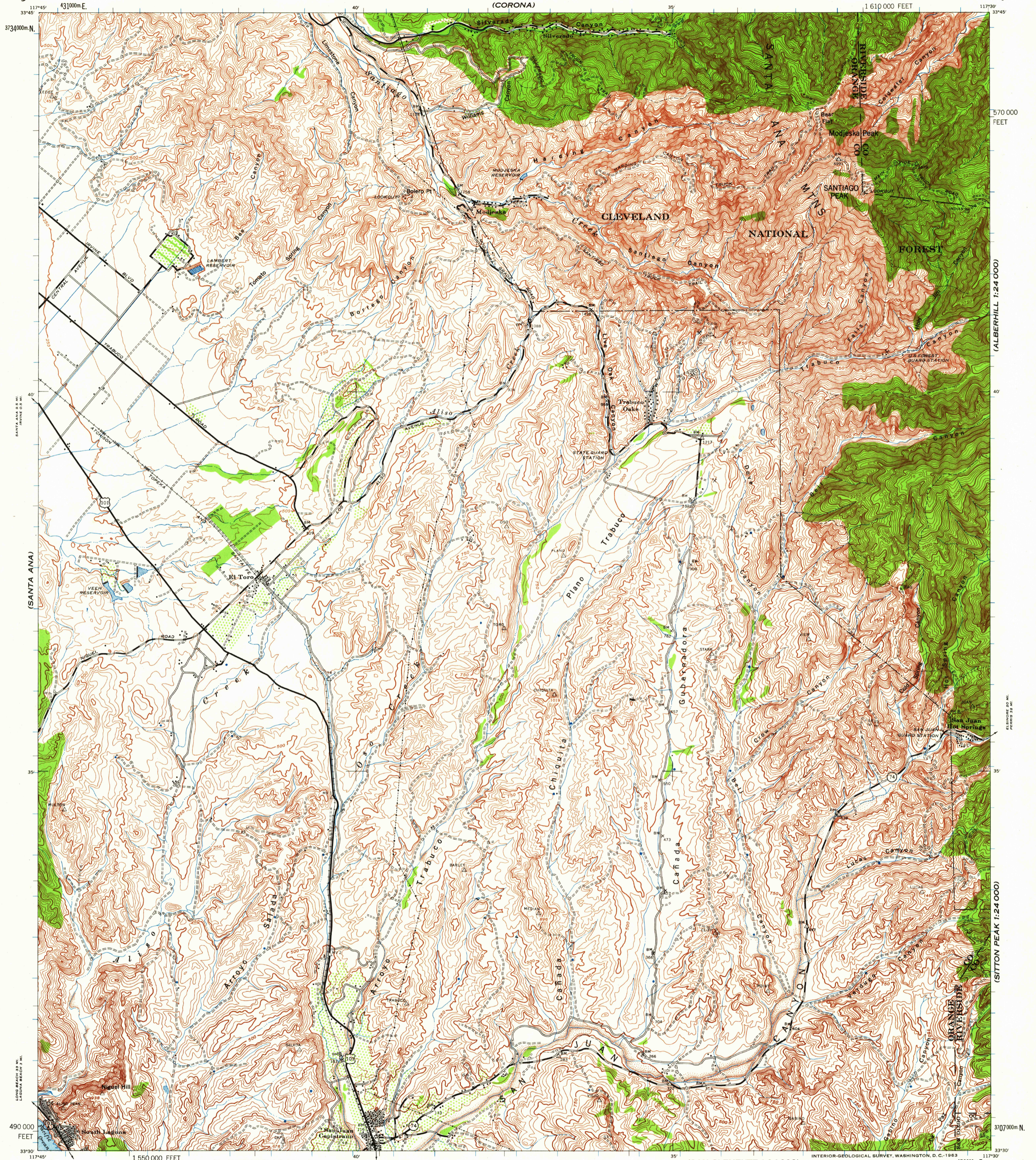
(CANAHEM)

CALIFORNIA

WAR DEPARTMENT
CORPS OF ENGINEERS, U. S. ARMY

SANTIAGO PEAK QUADRANGLE
CALIFORNIA
15 MINUTE SERIES
1:610 000 FEET

(RIVERSIDE)



Prepared under the direction of the Chief of Engineers by the Army Map Service (AM), U. S. Army, Washington, D. C. Scale changed, marginal data revised and Universal Transverse Mercator Grid added, 1947. Copied in 1947 from California, 1:62,500, AMS, Santiago Peak, 1942. Original map compiled by stereophotogrammetric methods for the Army Map Service by the 29th Engineer Battalion, U. S. Army. Horizontal control by USCGS, USGS, Rancho Santa Margarita Survey and the 29th Engineer Battalion, U. S. Army. Vertical control by USCGS, USGS and the 29th Engineer Battalion, U. S. Army. Aerial photography by U. S. Army Air Force, 1939.

LEGEND
ROAD DATA 1942

Hard surface, heavy duty road, more than two lanes wide	Loose surface, graded, dry weather road
Hard surface, heavy duty road, two lanes wide; Federal route marker	Trail; Dirt road
Secondary hard surface, all weather road, two lanes wide; State route marker	Railroad in street; Carline in street
RAILROADS	UNDER CONSTRUCTION
Standard gauge	Single track
Narrow gauge	Double track
Single track carline	Double track carline
BOUNDARIES	ABANDONED
International	Single track
State	Double track
County (with monument)	Single track
County subdivision	Double track
Reservation	Double track carline
Military reservation	Mine
School; Church	Horizontal control sta.
Cemetery	Bench mark
Churchyard	Spot elevation
	Woods
	Woods brushwood
	Brushwood
	Orchard
	Vineyard
	Intermittent lake
	Intermittent stream
	Dam
	Rapids; Falls
	Large rapids and falls
	Swamp, marsh
	Rocks awash at low tide
	Wharf, pier
	Man-made shoreline

SCALE 1:62 500
0 3000 6000 9000 12000 15000 18000 21000 FEET
0 1 2 3 4 5 KILOMETERS

CONTOUR INTERVAL 50 FEET
DATUM IS MEAN SEA LEVEL (1929 ADJ.)
TRANSVERSE MERCATOR PROJECTION
1927 NORTH AMERICAN DATUM

10,000-FOOT GRID TICKS, CALIFORNIA PLANE COORDINATE SYSTEM, ZONE 6, SHOWN IN BLACK
1000-METER GRID TICKS, UNIVERSAL TRANSVERSE MERCATOR SYSTEM, ZONE 11, SHOWN IN BLUE
REPRINTED FROM MILITARY EDITION FOR CIVIL USE
FOR SALE BY U. S. GEOLOGICAL SURVEY, DENVER 25, COLORADO OR WASHINGTON 25, D. C.
A FOLDER DESCRIBING TOPOGRAPHIC MAPS AND SYMBOLS IS AVAILABLE ON REQUEST

15°
TRUE NORTH
MAGNETIC NORTH
APPROXIMATE MEAN DECLINATION, 1942

USGS
Historical File
Topographic Division

SANTIAGO PEAK, CALIFORNIA
N3330-W11730/15
1942

APR - 3 1963

4700