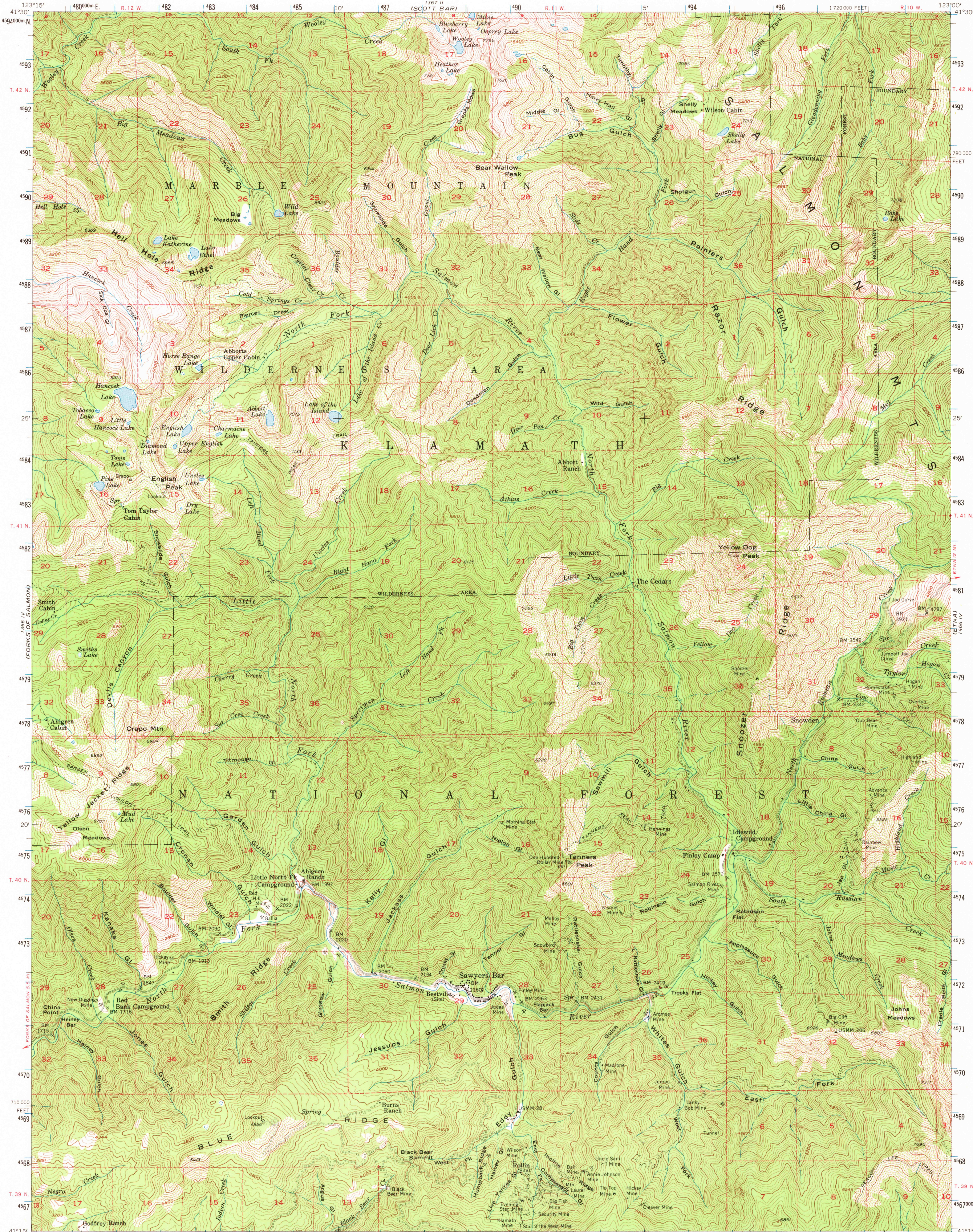
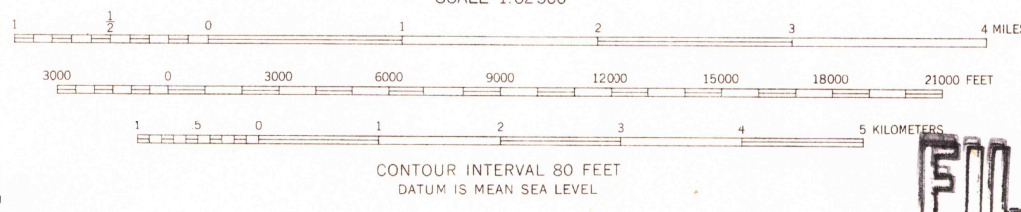
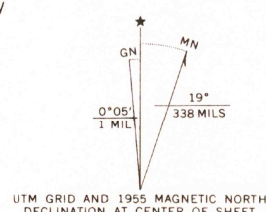


UNITED STATES
DEPARTMENT OF THE INTERIOR
GEOLOGICAL SURVEY

SAWYERS BAR QUADRANGLE
CALIFORNIA-SISKIYOU CO.
15 MINUTE SERIES (TOPOGRAPHIC)



Mapped, edited, and published by the Geological Survey
Control by USGS, USC&GS, and USFS
Topography from aerial photographs by multiplex methods
Aerial photographs taken 1951. Field check 1955
Polyconic projection. 1927 North American datum
10,000-foot grid based on California coordinate system, zone 1
1000-meter Universal Transverse Mercator grid ticks,
zone 10, shown in blue
Dashed land lines indicate approximate locations
Certain land lines are omitted in T. 39 N.-R. 11 W. and
T. 39 N.-R. 12 W. because of insufficient data
Unchecked elevations are shown in brown



USGS
Historical File
Topographic Division
FILE COPY
TOPOGRAPHIC DIVISION

ROAD CLASSIFICATION
Light-duty
Unimproved dirt

SAWYERS BAR, CALIF.
N4115-W12300/15
1955
AMS 1366 I-SERIES V795

FOR SALE BY U. S. GEOLOGICAL SURVEY, DENVER, COLORADO 80225 OR WASHINGTON, D. C. 20542
A FOLDER DESCRIBING TOPOGRAPHIC MAPS AND SYMBOLS IS AVAILABLE ON REQUEST

7025
SEP 23 1969