

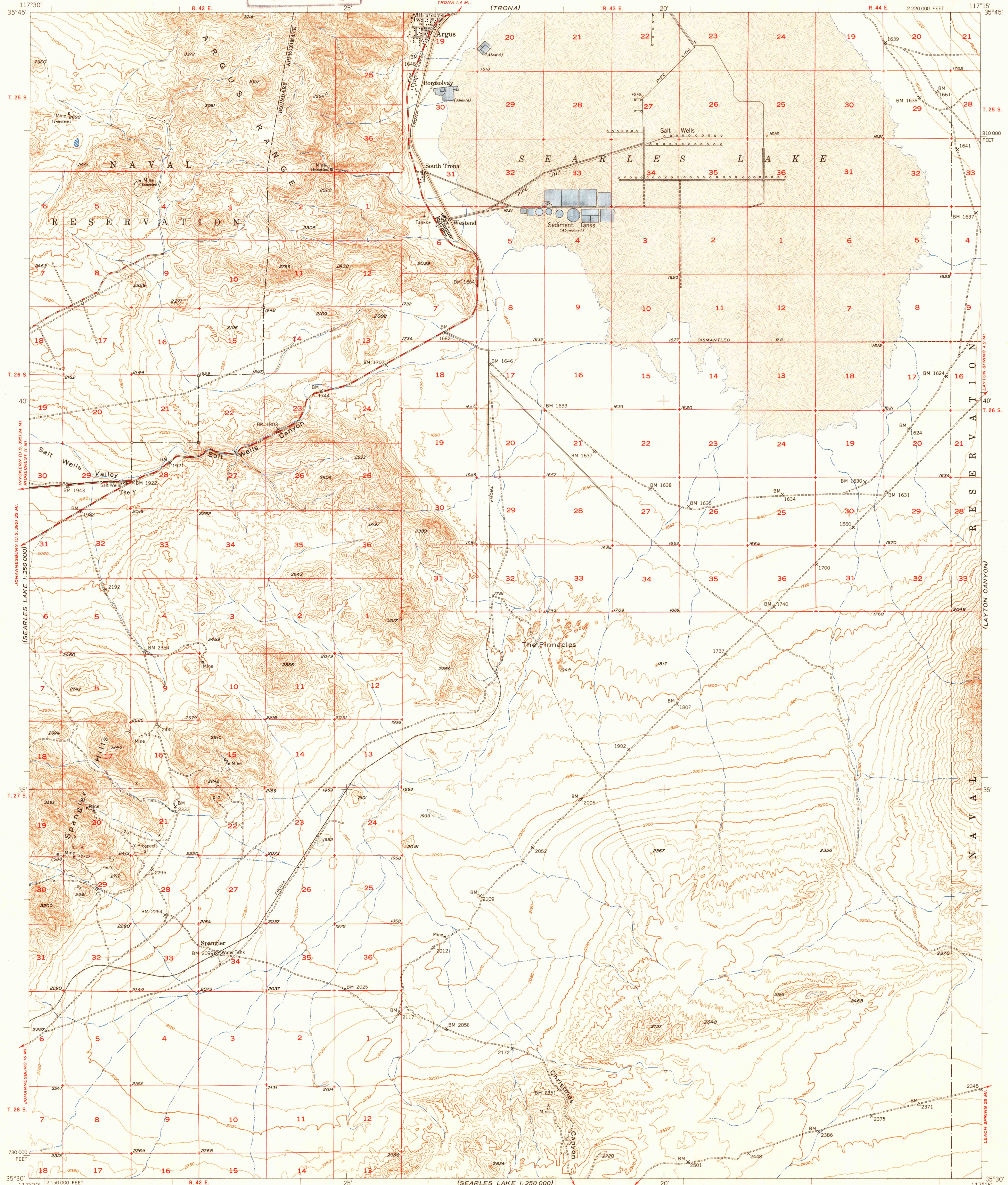
SEARLES LAKE
1:250,000

UNITED STATES
DEPARTMENT OF THE INTERIOR
GEOLOGICAL SURVEY

U. S. G. S.
FILE COPY
Inspection and Editing

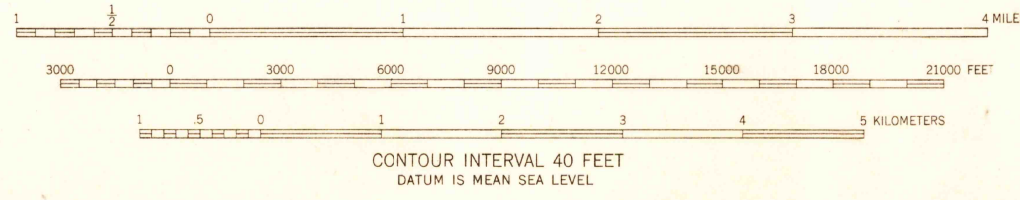
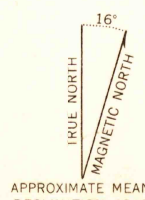
SEARLES LAKE QUADRANGLE
CALIFORNIA-SAN BERNARDINO CO.
15 MINUTE SERIES (TOPOGRAPHIC)

(MAINLY PEAK)



(RANDS BORO)

Mapped, edited, and published by the Geological Survey
Control by USGS, and USC&GS
Topography from aerial photographs by multiplex methods
Aerial photographs taken 1946. Field check 1949
Polyconic projection. 1927 North American datum
10,000-foot grid based on California coordinate system,
zone 5



THIS MAP COMPLIES WITH NATIONAL MAP ACCURACY STANDARDS
FOR SALE BY U. S. GEOLOGICAL SURVEY, FEDERAL CENTER, DENVER, COLORADO OR WASHINGTON 25, D. C.
A FOLDER DESCRIBING TOPOGRAPHIC MAPS AND SYMBOLS IS AVAILABLE ON REQUEST

USGS
Historical File
Topographic Division

U. S. G. S.
FILE COPY
Inspection and Editing

ROAD CLASSIFICATION
HARD-SURFACE ALL WEATHER ROADS DRY WEATHER ROADS
Heavy-duty ——— LAKE ISLAND Improved dirt
Medium-duty ——— LAKE ISLAND Unimproved dirt
Loose-surface, graded, or narrow hard-surface - - -
U. S. Route State Route

SEARLES LAKE, CALIF.
N3530-W11715/15
EDITION OF 1950

JUN 27 1950 4320