

GUERNWOOD PARK 1.4 MI.
GUERNVILLE 0.5 MI.

UNITED STATES
DEPARTMENT OF THE INTERIOR
GEOLOGICAL SURVEY

HACIENDA 2.5 MI.
HILTON 1.7 MI.

HACIENDA 1.9 MI.

STATE OF CALIFORNIA
REPRESENTED BY THE
DIRECTOR OF PUBLIC WORKS
(Beahtsburg)

HEALDSBURG 10.5 MI.

U. S. G. S.
FILE COPY
Inspection and Editing.

WINDSOR 5.3 MI.

JUNC. U. S. NO. 101 1.1 MI.

CALIFORNIA
SEBASTOPOL QUADRANGLE
1780000 FEET (2) 122°45'

(Callistoga)

SANTA ROSA 2.6 MI.

SANTA ROSA 2.6 MI.

SANTA ROSA 2.6 MI.

SANTA ROSA 2.6 MI.

SANTA ROSA 2.6 MI.

SANTA ROSA 2.6 MI.

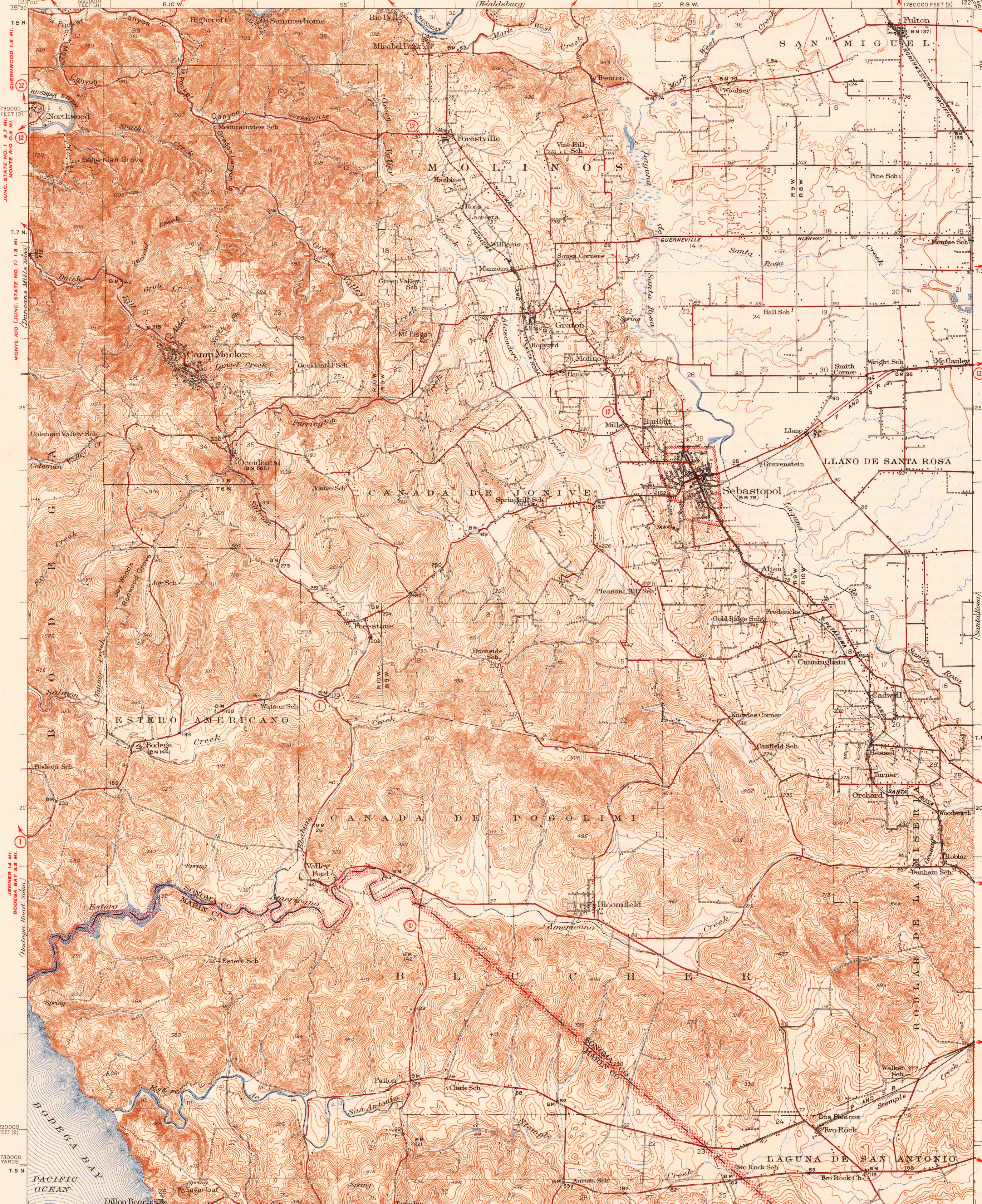
SANTA ROSA 2.6 MI.

SANTA ROSA 2.6 MI.

SANTA ROSA 2.6 MI.

SANTA ROSA 2.6 MI.

SANTA ROSA 2.6 MI.



Topography by J.L. Lewis, G.S. Druhot,
L.O. Newsome, D.H. Rutledge, and F.H. Purdy
Surveyed in 1933 and 1935

ROAD CLASSIFICATION
1947
Dependable hard surface
Heavy-duty road
Secondary hard surface
All weather road
Dirt road
More than two lanes indicated along road with tick at point of change
U. S. Route (15)
State Route (26)

APPROXIMATE MEAN
DECLINATION, 1935

Scale 62500
1000 500 0 1000 2000 3000 4000 5000 6000 7000 8000 9000 10000
1000 0 1000 2000 3000 4000 5000 6000 7000 8000 9000 10000
1 5 0 1 2 3 4 5
Kilometers
Contour interval 25 feet
Datum is mean sea level

USGS
Historical File
Topographic Division

U. S. G. S.
FILE COPY
Inspection and Editing.

Polyconic projection, 1927 North American datum
5000 yard grid based on U.S. zone system, G
10000 foot grids based on California (2) and
California (3) rectangular coordinate systems
To join Point Reyes and Santa Rosa maps
use dotted projection corners
SEBASTOPOL CALIF.
Edition of 1942
reprinted 1948
N3815-W12245/15

FEB 12 1948

4255