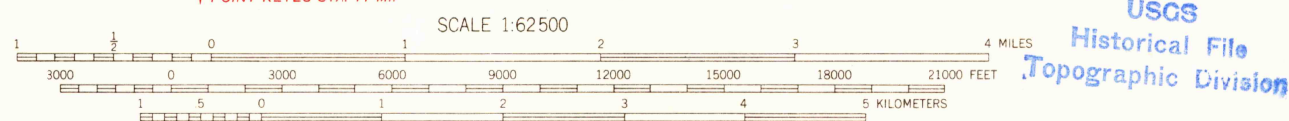


Mapped, edited, and published by the Geological Survey
Control by USGS and USC&GS
Compiled in 1959 from 1:24 000 scale maps of the Sebastopol, Camp Meeker, Valley Ford and Two Rock 7.5 minute quadrangles, surveyed 1954
Topography from aerial photographs by photogrammetric methods and by planetable surveys. Aerial photographs taken 1952
Hydrography compiled from USC&GS chart 5603
Polyconic projection. 1927 North American datum
10,000-foot grids based on California coordinate system, zones 2 and 3
1000-meter Universal Transverse Mercator grid ticks, zone 10, shown in blue
Red tint indicates areas in which only landmark buildings are shown
Dashed land lines indicate approximate locations
Unchecked elevations are shown in brown

TRUE NORTH
MAGNETIC NORTH
APPROXIMATE MEAN DECLINATION, 1954



CONTOUR INTERVAL 40 FEET
DOTTED LINES REPRESENT 20-FOOT CONTOURS
DATUM IS MEAN SEA LEVEL

DEPTH CURVES IN FEET—DATUM IS MEAN LOWER LOW WATER
SHORELINE SHOWN REPRESENTS THE APPROXIMATE LINE OF MEAN HIGH WATER
THE MEAN RANGE OF TIDE IS APPROXIMATELY 4 FEET

THIS MAP COMPLIES WITH NATIONAL MAP ACCURACY STANDARDS
FOR SALE BY U. S. GEOLOGICAL SURVEY, DENVER 25, COLORADO OR WASHINGTON 25, D. C.
A FOLDER DESCRIBING TOPOGRAPHIC MAPS AND SYMBOLS IS AVAILABLE ON REQUEST

ROAD CLASSIFICATION
Heavy-duty — Light duty
Medium-duty — Unimproved dirt
State Route



QUADRANGLE LOCATION
This area also covered by 1:24 000 scale maps of Sebastopol, Camp Meeker, Valley Ford and Two Rock 7.5 minute quadrangles, surveyed 1954
SEBASTOPOL, CALIF.
N3815—W12245/15
1954

U.S.G.S.
FILE COPY
TOPOGRAPHIC DIVISION

MAR 29 1964
4585