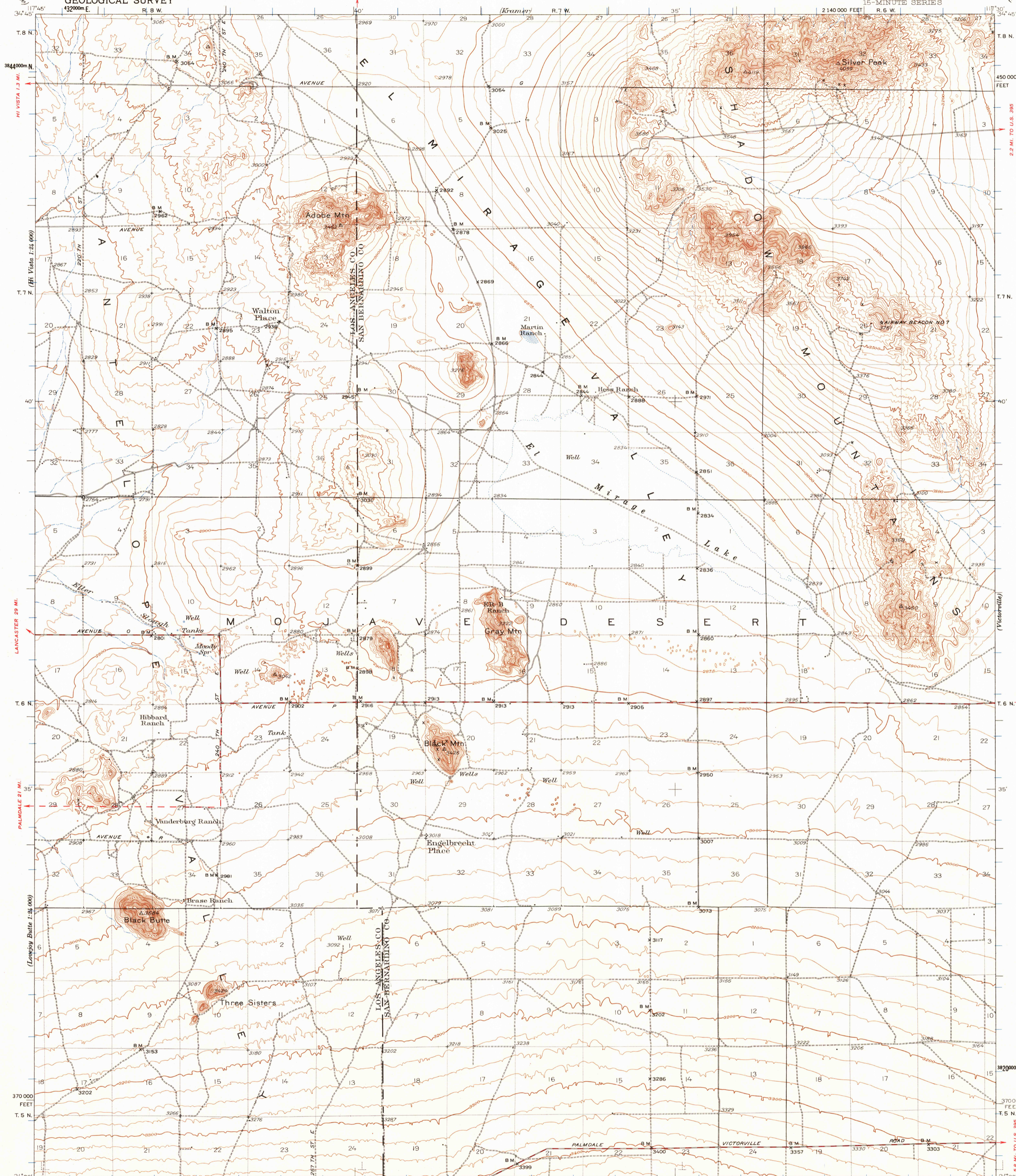


UNITED STATES
DEPARTMENT OF THE INTERIOR
GEOLOGICAL SURVEY

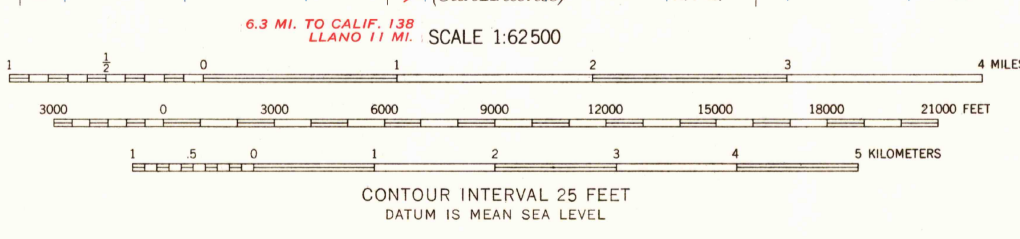
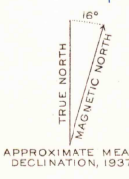
CALIFORNIA
SHADOW MOUNTAINS QUADRANGLE
15-MINUTE SERIES

EDWARDS AIR FORCE BASE 26 MI.



Topography by J.P. Harrison, C.P. McKinley, R.G. Stevenson,
F.K. Van Zandt, C.W. Birdseye, and R.S. Gould
Surveyed in 1930, 1931, and 1937
Contours in Los Angeles County revised, 1937

ROAD CLASSIFICATION
1964
Medium-duty ————
Light-duty ————
Unimproved dirt - - - - -



This area also covered by 7.5 minute,
1:24,000 scale maps: Shadow Mountains 1955,
Adobe Mountain 1955, El Mirage 1955, and
Shadow Mountains SE 1955

Polyconic projection. 1927 North American datum
10,000-foot grid based on California (5)
rectangular coordinate system
1000-meter Universal Transverse Mercator grid ticks,
zone 11, shown in blue

To join San Antonio map use
dotted projection corners

USGS
Historical File
Topographic Division

SHADOW MOUNTAINS, CALIF.
N3430-W11730/15
1937

FOR SALE BY U. S. GEOLOGICAL SURVEY, DENVER 25, COLORADO OR WASHINGTON 25, D. C.
A FOLDER DESCRIBING TOPOGRAPHIC MAPS AND SYMBOLS IS AVAILABLE ON REQUEST

JUL 14 1964

2665