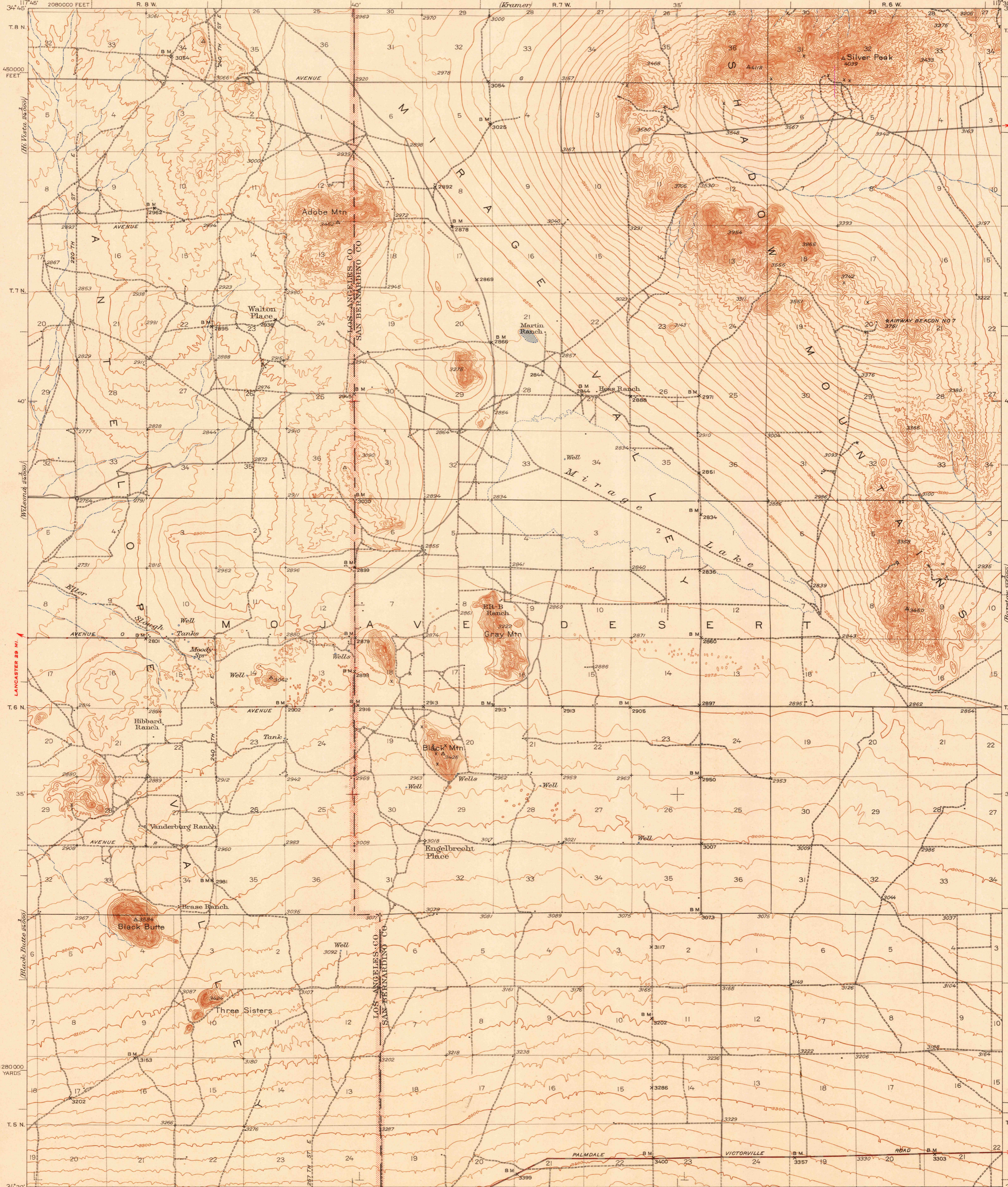


U. S. G. S.  
FILE COPY  
Inspection and Editing.

UNITED STATES  
DEPARTMENT OF THE INTERIOR  
GEOLOGICAL SURVEY

CALIFORNIA  
SHADOW MOUNTAINS QUADRANGLE  
15-MINUTE SERIES



Rivers (Lakes)  
450000 FEET  
T. 8 N.  
T. 7 N.  
T. 6 N.  
T. 5 N.  
1280 000 YARDS  
34° 30'

(Barstow 128000)  
JUNC. U. S. NO. 395 2.2 MI.  
JUNC. U. S. NO. 395 5.8 MI.  
VICTORVILLE 13 MI.  
T. 5 N.  
370000 FEET  
T. 5 N.  
34° 30'

Topography by J. P. Harrison, C. P. McKinley, R. G. Stevenson,  
F. K. Van Zandt, C. W. Birdseye, and R. S. Gould  
Surveyed in 1930, 1931, and 1937  
Culture in Los Angeles County revised, 1937

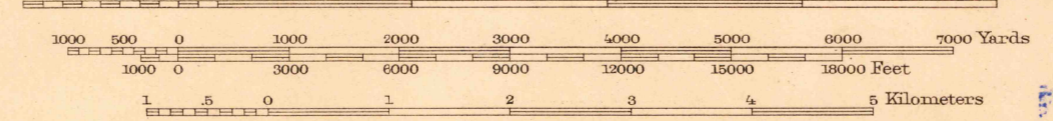
JUNC. STATE NO. 138 6.3 MI. (San Antonio)  
Scale 1:62,500

Maps of the Hi Vista, Adobe, Wilsona, El Mirage,  
Black Butte, and Angle quadrangles, scale  
1:24,000, contour interval 5 feet, from larger  
scale surveys of the Los Angeles County part  
of this quadrangle, are available.

Polyconic projection, 1927 North American datum  
5000 yard grid based on U. S. zone system, G  
10000 foot grid based on California (5)  
rectangular coordinate system  
To join San Antonio map use  
dotted projection corners

ROAD CLASSIFICATION  
1947  
Dependable hard surface  
heavy-duty road  
Secondary hard surface  
all-weather road  
Dirt road  
Dry weather roads  
Loose-surface graded  
Unsurfaced, graded  
Dirt road  
U. S. Route  
State Route  
More than two lanes indicated along road with tick at point of change. 2 LANES, 4 LANES

APPROXIMATE MEAN  
DECLINATION, 1937



Contour interval 25 feet  
Datum is mean sea level

USGS  
Historical Files  
Topographic Division  
FILE COPY  
Inspection and Editing.

SHADOW MOUNTAINS, CALIF.  
Edition of 1942  
reprinted 1948  
N3430-W11730/15

FEB 12 1948

4265