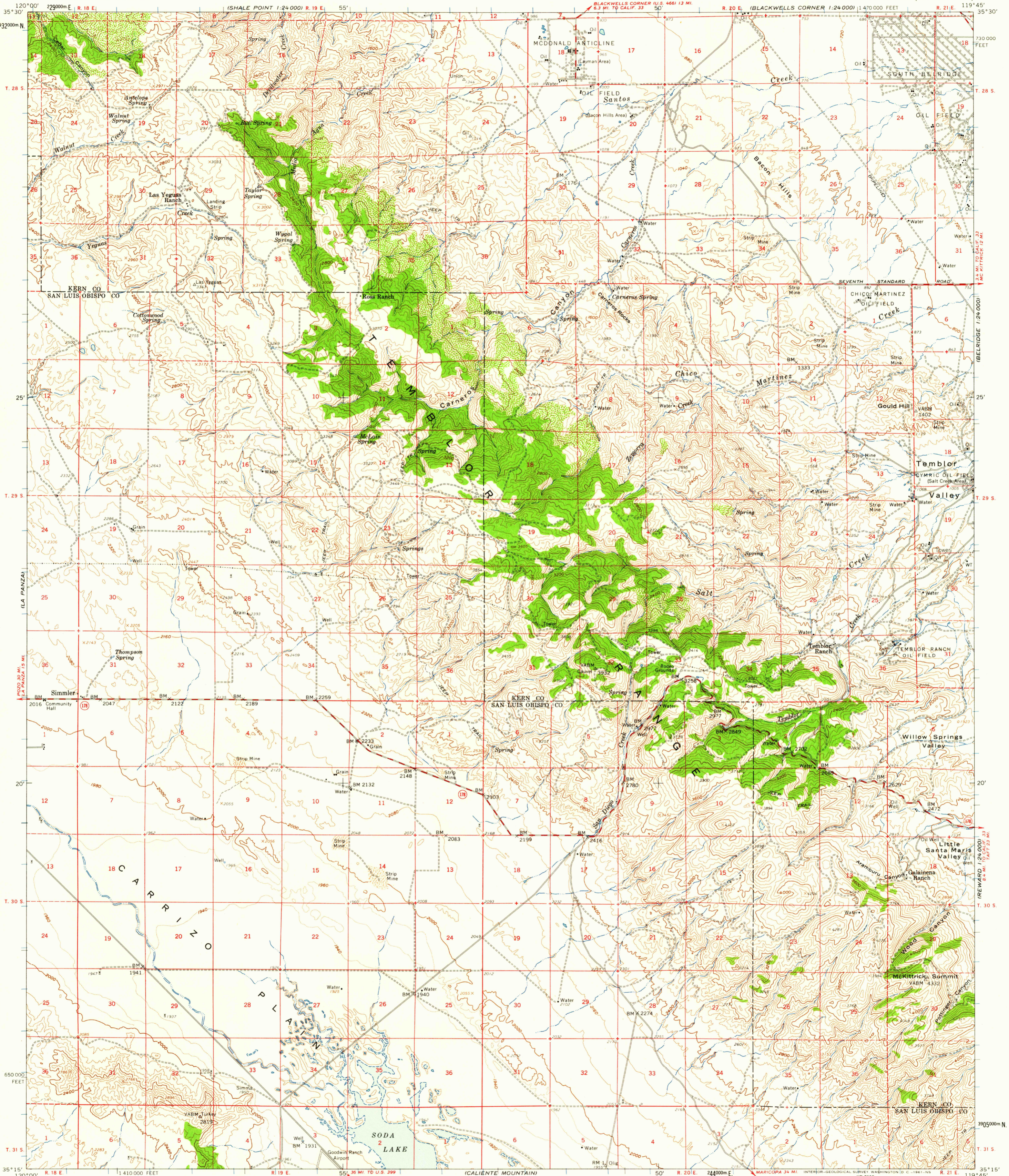
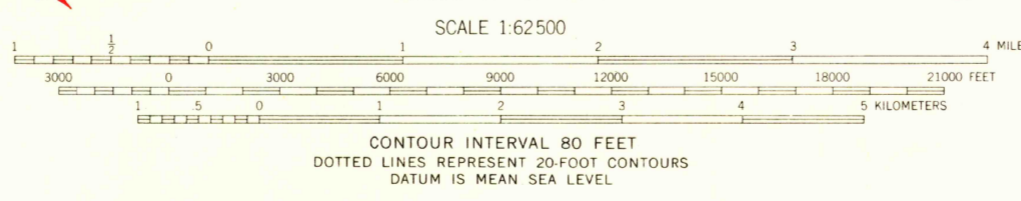
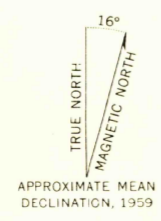


UNITED STATES
DEPARTMENT OF THE INTERIOR
GEOLOGICAL SURVEY

SIMMLER QUADRANGLE
CALIFORNIA
15 MINUTE SERIES (TOPOGRAPHIC)



Mapped, edited, and published by the Geological Survey
Control by USGS, USC&GS, and USCE
Compiled in 1960 from 1:24,000-scale maps of
Carneros Rocks, Las Vegas Ranch, Simmler, and
McKittrick Summit 7.5 minute quadrangles, surveyed 1959
Topography from aerial photographs by photogrammetric methods
and by planetable surveys. Aerial photographs taken 1953
Polyconic projection. 1927 North American datum
10,000-foot grid based on California coordinate system, zone 5
1000-meter Universal Transverse Mercator grid-ticks,
zone 11, shown in blue
Dashed land lines indicate approximate locations



CONTOUR INTERVAL 80 FEET
DOTTED LINES REPRESENT 20-FOOT CONTOURS
DATUM IS MEAN SEA LEVEL

THIS MAP COMPLIES WITH NATIONAL MAP ACCURACY STANDARDS
FOR SALE BY U. S. GEOLOGICAL SURVEY, DENVER 25, COLORADO OR WASHINGTON 25, D. C.
A FOLDER DESCRIBING TOPOGRAPHIC MAPS AND SYMBOLS IS AVAILABLE ON REQUEST

USGS
Historical File
Topographic Division



ROAD CLASSIFICATION
Medium-duty — Light duty
Unimproved dirt —
State Route

U.S.G.S.
This area also covered by 1:24,000-scale maps of
Carneros Rocks, Las Vegas Ranch, Simmler, and
McKittrick Summit 7.5 minute quadrangles, surveyed 1959
SIMMLER, CALIF.
N3515—W11945/15
1959

FILE COPY
TOPOGRAPHIC DIVISION

OCT 5 1961
3545