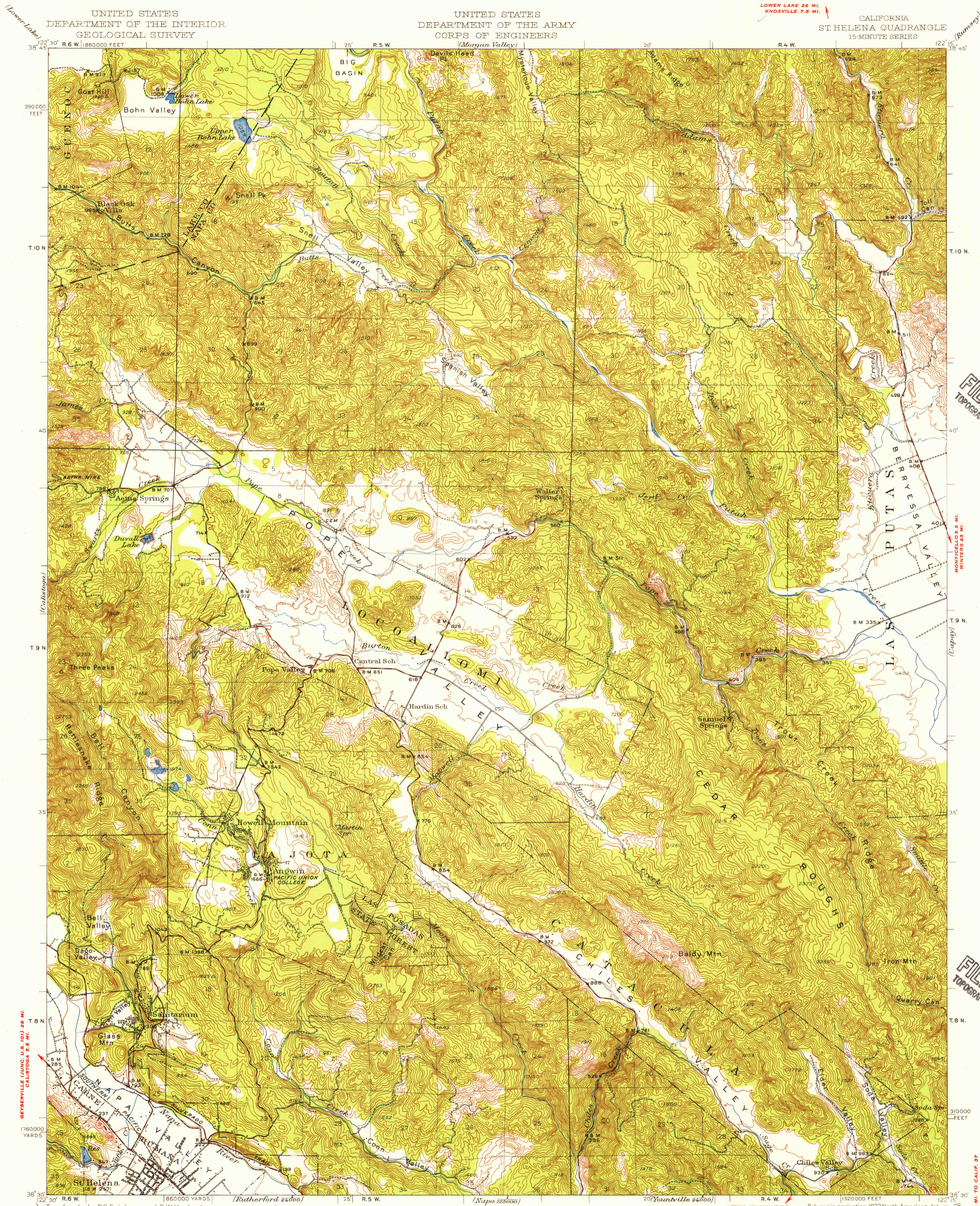


LOWER LAKE 26 MI.  
KNOXVILLE 7.5 MI.

(Rumsey)



U.S.G.S.  
FILE COPY  
TOPOGRAPHIC DIVISION

U.S.G.S.  
FILE COPY  
TOPOGRAPHIC DIVISION

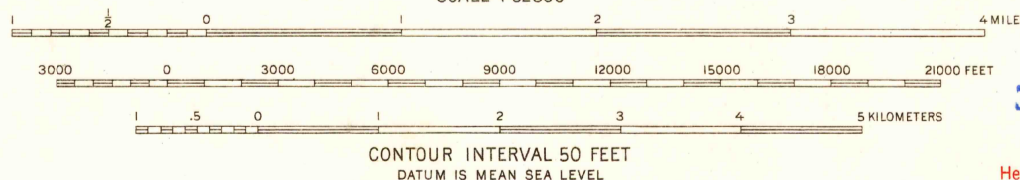
(Cape Valley)

GEYSERVILLE (JUNC. U.S. 101) 29 MI.  
CALISTOGA 5.6 MI.

(Santa Rosa)

Topography by P.C. Erickson and G.W. Harbert  
Surveyed in 1942

RUTHERFORD 4 MI.  
NAPA 18 MI.



USGS  
Historical File  
Topographic Division

ROAD CLASSIFICATION  
Heavy-duty 4 LANE 6 LANE Light-duty  
Medium-duty 4 LANE 6 LANE Unimproved dirt  
U.S. Route State Route

Polyconic projection, 1927 North American datum  
5000 yard grid based on U.S. zone system, G  
10000 foot grid based on California (2)  
rectangular coordinate system  
Certain land lines are omitted because of  
insufficient data. All recovered corners are shown

ST. HELENA, CALIF.

N 3830 - W 12215 / 15  
1942

FOR SALE BY U.S. GEOLOGICAL SURVEY, FEDERAL CENTER, DENVER, COLORADO OR WASHINGTON 25, D.C.  
A FOLDER DESCRIBING TOPOGRAPHIC MAPS AND SYMBOLS IS AVAILABLE ON REQUEST

MAY 10 1956  
3110