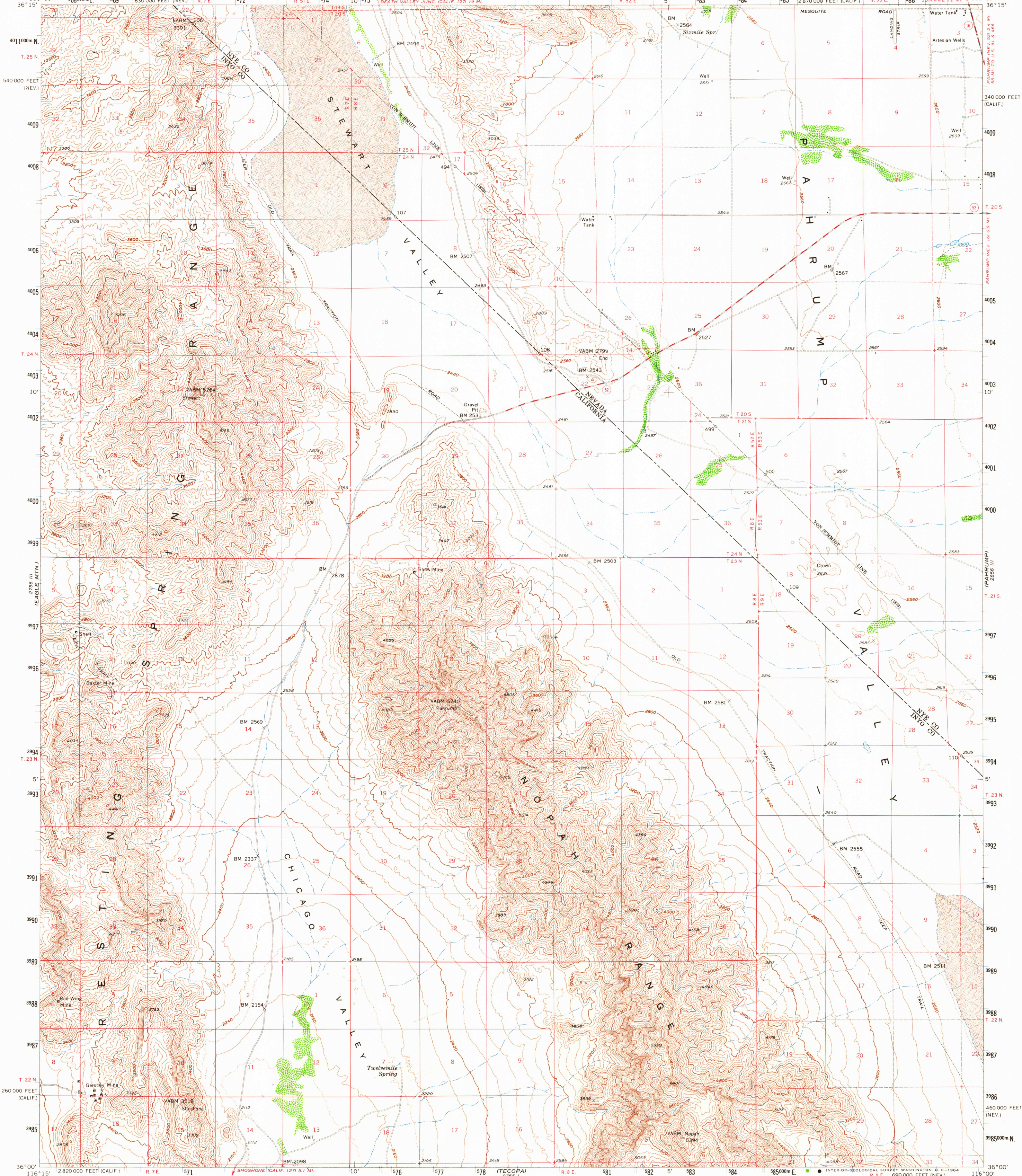


UNITED STATES  
DEPARTMENT OF THE INTERIOR  
GEOLOGICAL SURVEY

STATE OF CALIFORNIA  
EDMUND G. BROWN, GOVERNOR  
HARVEY O. BANKS, DIRECTOR OF WATER RESOURCES

STEWART VALLEY QUADRANGLE  
CALIFORNIA-NEVADA  
15 MINUTE SERIES (TOPOGRAPHIC)



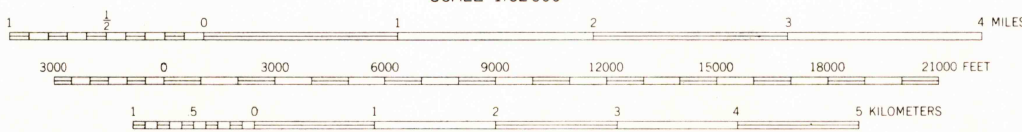
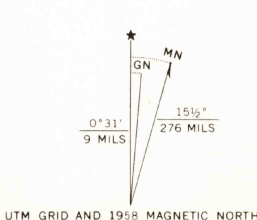
Mapped, edited, and published by the Geological Survey

Control by USGS and USC&GS

Topography from aerial photographs by Wild A-8 plotter and by planetable surveys 1958. Aerial photographs taken 1953

Polyconic projection. 1927 North American datum 10,000-foot grids based on California coordinate system, zone 4, and Nevada coordinate system, central zone 1000-meter Universal Transverse Mercator grid ticks, zone 11, shown in blue

Dashed land lines indicate approximate locations



CONTOUR INTERVAL 80 FEET  
DOTTED LINES REPRESENT 40-FOOT CONTOURS  
DATUM IS MEAN SEA LEVEL

THIS MAP COMPLIES WITH NATIONAL MAP ACCURACY STANDARDS  
FOR SALE BY U. S. GEOLOGICAL SURVEY, DENVER 25, COLORADO OR WASHINGTON 25, D. C.  
A FOLDER DESCRIBING TOPOGRAPHIC MAPS AND SYMBOLS IS AVAILABLE ON REQUEST

USGS  
Historical File  
Topographic Division



QUADRANGLE LOCATION

ROAD CLASSIFICATION  
Medium-duty ——— Light-duty ———  
Unimproved dirt ———  
State Route ———

STEWART VALLEY, CALIF.-NEV.  
N3600-W11600/15

1958  
AMS 2756 II SERIES V795

FILE COPY  
TOPOGRAPHIC DIVISION

OCT 9 1960

3220