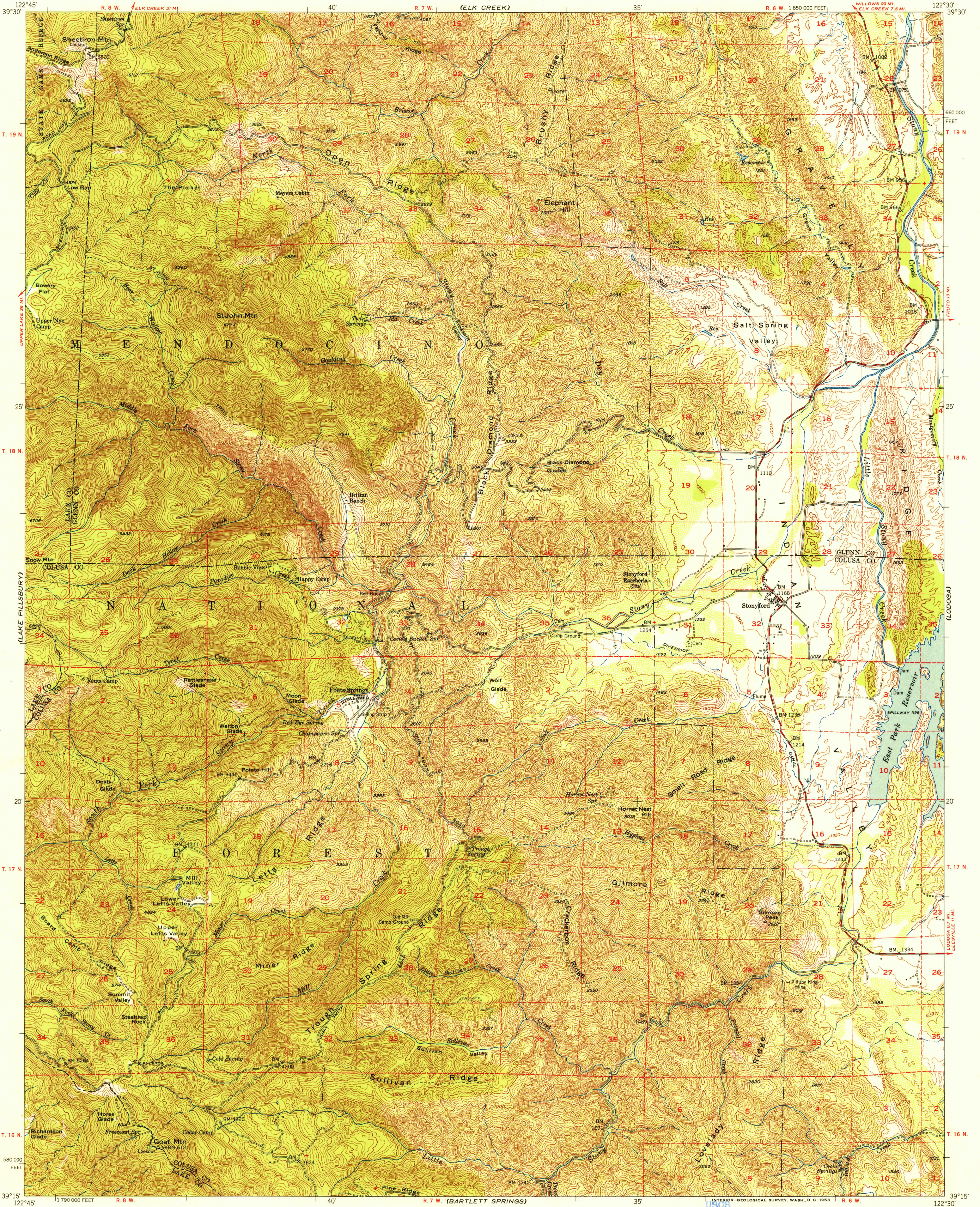
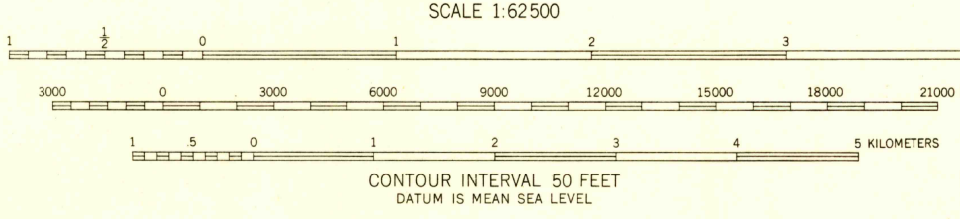


U.S.G.S.  
**FILE COPY**  
Inspection and Editing



Mapped, edited, and published by the Geological Survey  
Control by USGS, USC&GS, and USCE  
Topography from aerial photographs by multiplex methods  
Aerial photographs taken 1948. Field check 1951  
Polyconic projection, 1927 North American datum  
10,000-foot grid based on California coordinated system, zone 2  
Dashed land lines indicate approximate location  
Certain land lines omitted because of insufficient data  
All recovered corners are shown  
Unchecked elevations are shown in brown



ROAD CLASSIFICATION  
Heavy-duty **4 LANE 16 LANE** Light-duty  
Medium-duty **4 LANE 16 LANE** Unimproved dirt  
U.S. Route State Route



U.S.G.S.  
**FILE COPY**  
Inspection and Editing

STONYFORD, CALIF.  
N3915-W12230/15

1951  
DEC 28 1953

3240

THIS MAP COMPLIES WITH NATIONAL MAP ACCURACY STANDARDS  
FOR SALE BY U. S. GEOLOGICAL SURVEY, FEDERAL CENTER, DENVER, COLORADO OR WASHINGTON 25, D. C.  
A FOLDER DESCRIBING TOPOGRAPHIC MAPS AND SYMBOLS IS AVAILABLE ON REQUEST