

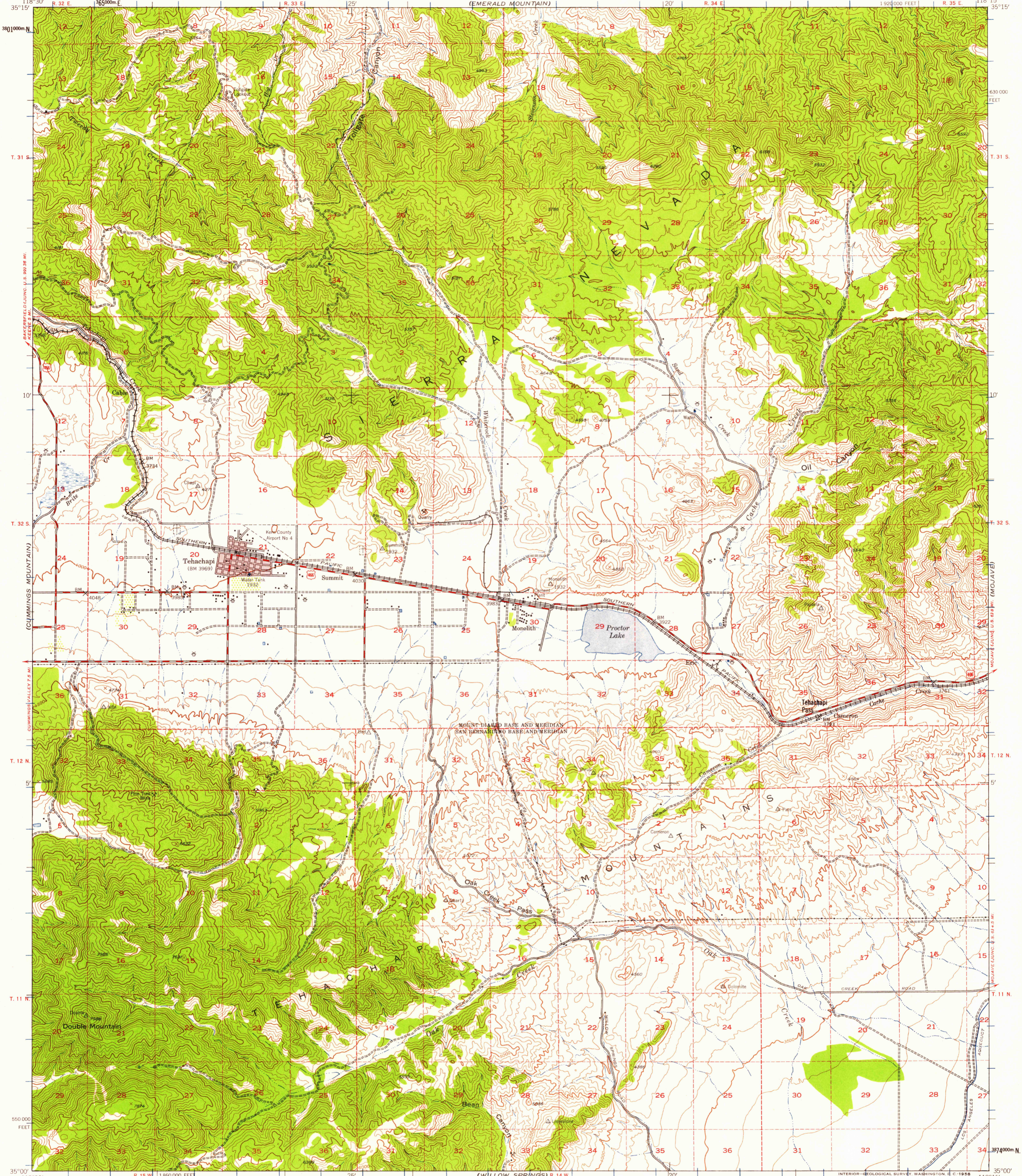
(BROCKENRIDGE MOUNTAIN)

UNITED STATES
DEPARTMENT OF THE INTERIOR
GEOLOGICAL SURVEY

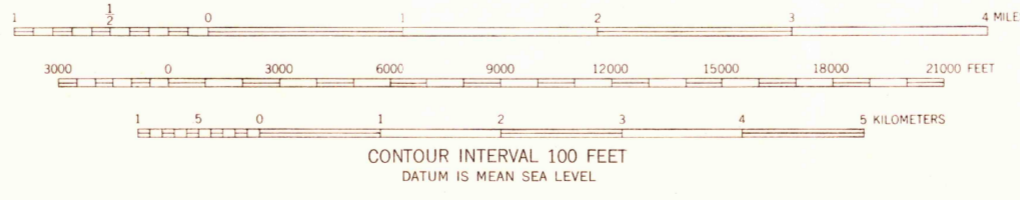
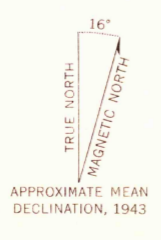
UNITED STATES
DEPARTMENT OF THE ARMY
CORPS OF ENGINEERS
(EMERALD MOUNTAIN)

TEHACHAPI QUADRANGLE
CALIFORNIA—KERN CO.
15 MINUTE SERIES (TOPOGRAPHIC)

(GROSS MTN)



Map by the Army Map Service
Published for civil use by the Geological Survey
Control by USGS and USC&GS
Topography from aerial photographs by stereophotogrammetric methods. Aerial photographs taken 1943.
Polyconic projection. 1927 North American datum
10,000-foot grid based on California coordinate system, zone 5
Dashed land lines indicate approximate location
Red tint indicates areas in which only landmark buildings are shown
1000-meter Universal Transverse Mercator grid ticks, zone 11, shown in blue



USGS
Historical File
Topographic Division

ROAD CLASSIFICATION	
Heavy-duty	Light-duty
Medium-duty	Unimproved dirt
U. S. Route	State Route



U.S.G.S.
FILE COPY
TOPOGRAPHIC DIVISION

TEHACHAPI, CALIF.
N3500-W11815/15
1943

FOR SALE BY U. S. GEOLOGICAL SURVEY, DENVER 2, COLORADO OR WASHINGTON 25, D. C.
A FOLDER DESCRIBING TOPOGRAPHIC MAPS AND SYMBOLS IS AVAILABLE ON REQUEST

DEC 11 1955
3485