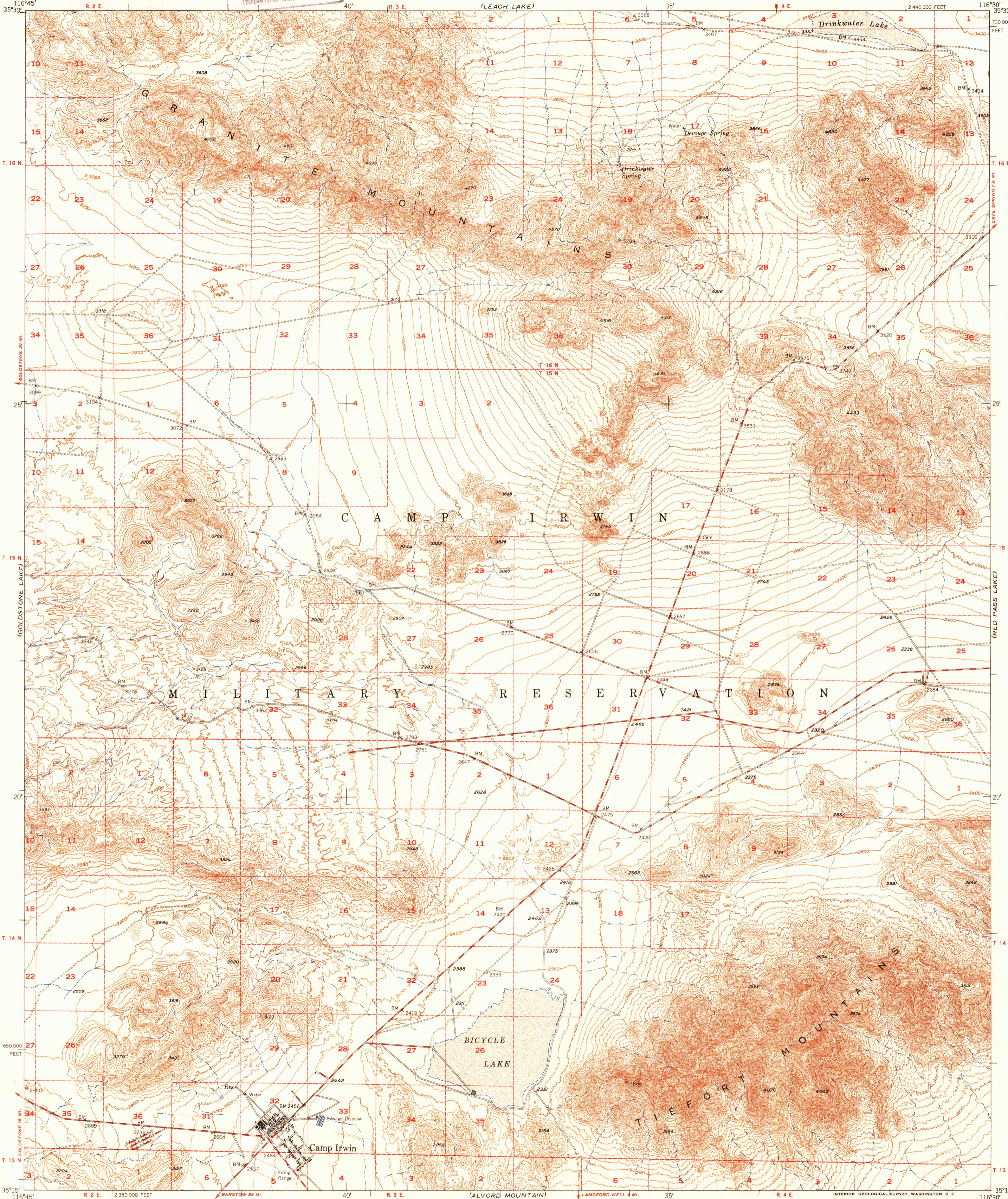


USGS
FILE COPY
Inspection and Editing

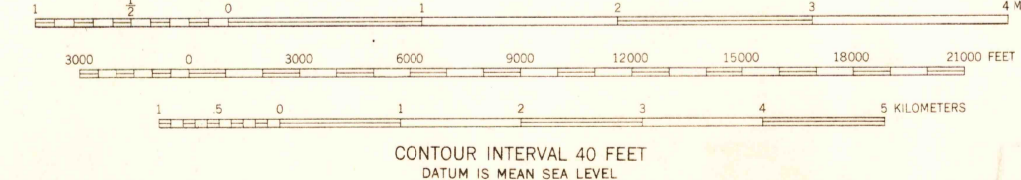
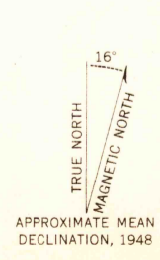


(QUAIL MOUNTAINS)
116°45'
35°30'
T. 16 N.
T. 15 N.
T. 14 N.
T. 13 N.
35°15'

(AVAWATZ PASS)
116°30'
730 000
FEET
T. 16 N.
T. 15 N.
T. 14 N.
T. 13 N.
35°15'

650 000
FEET
R. 2 E. 2 380 000 FEET
R. 3 E. (ALVORD MOUNTAIN)
R. 4 E. 2 440 000 FEET
116°45' 40' 35' 116°30'

Mapped, edited, and published by the Geological Survey
Control by US&GS and USGS
Topography from aerial photographs by multiplex methods
Aerial photographs taken 1948. Field check 1948
Polyconic projection. 1927 North American datum
10,000-foot grid based on California coordinate system,
zone 5
Dashed land lines indicate approximate location
Unchecked elevations are shown in brown



USGS
Historical File
Topographic Division

ROAD CLASSIFICATION

Heavy-duty	4 LANE ISLANE	Light-duty
Medium-duty	4 LANE ISLANE	Unimproved dirt
U. S. Route	State Route

USGS
FILE COPY
Inspection and Editing

TIEFORT MOUNTAINS, CALIF.
N3515-W11630/15
EDITION OF 1951

FOR SALE BY U. S. GEOLOGICAL SURVEY, FEDERAL CENTER, DENVER, COLORADO OR WASHINGTON 25, D. C.
A FOLDER DESCRIBING TOPOGRAPHIC MAPS AND SYMBOLS IS AVAILABLE ON REQUEST