

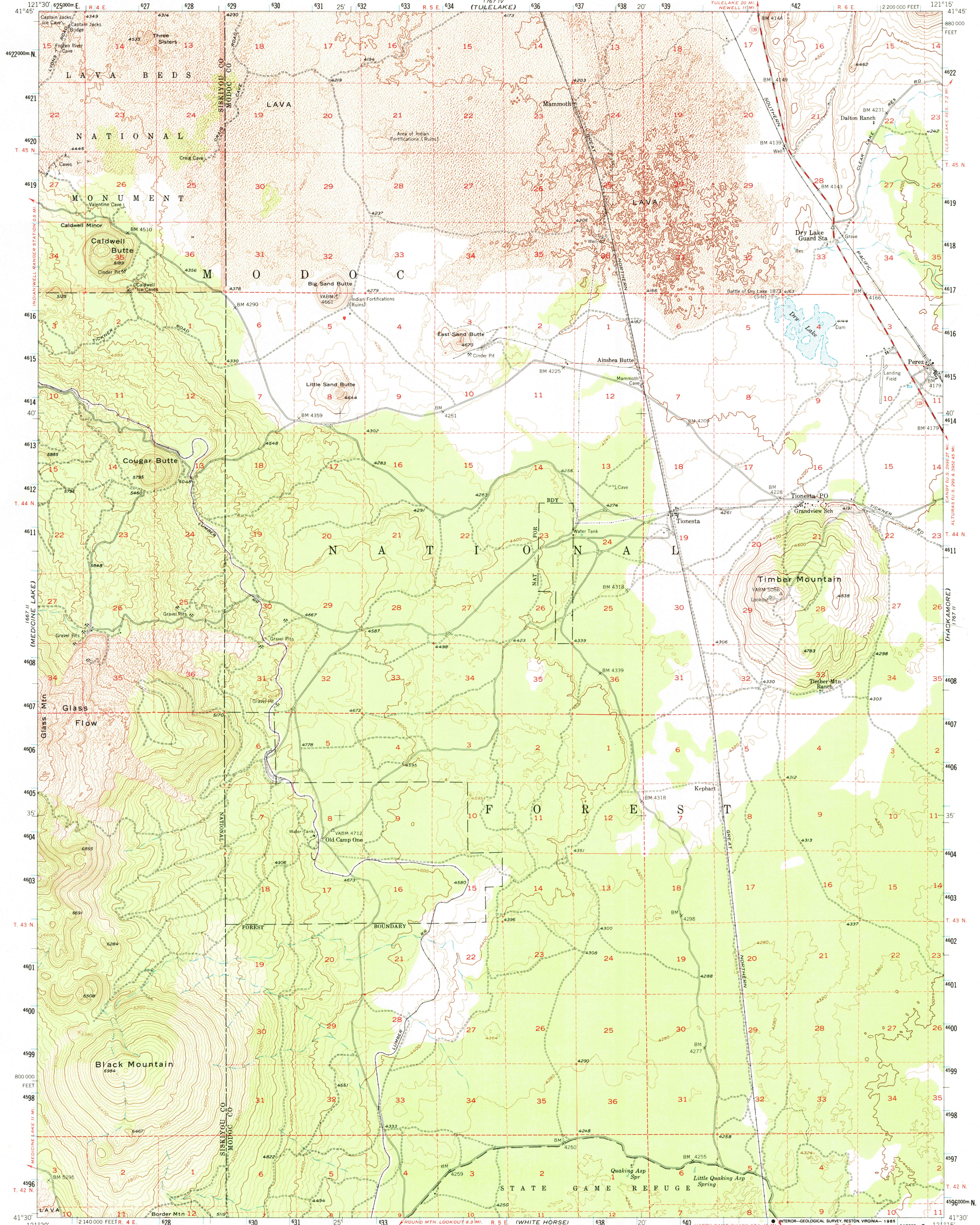
(MT. DOME)
1867 I

UNITED STATES
DEPARTMENT OF THE INTERIOR
GEOLOGICAL SURVEY

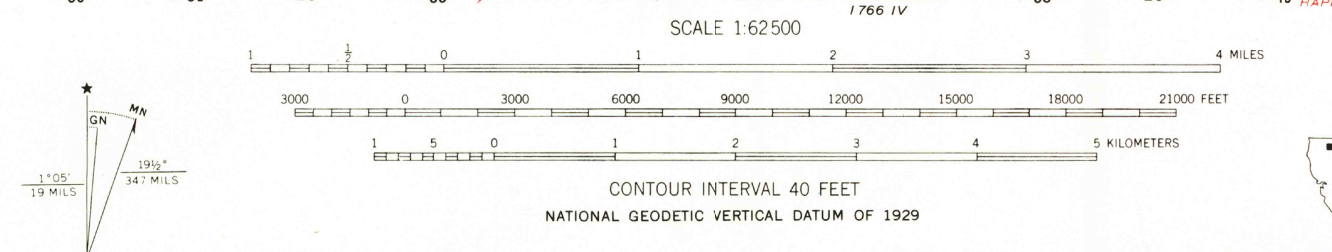
STATE OF CALIFORNIA
DEPARTMENT OF WATER RESOURCES

TIMBER MTN. QUADRANGLE
CALIFORNIA
15 MINUTE SERIES (TOPOGRAPHIC)

1767 I
(CLEAR LAKE RESERVOIR)



Maped, edited, and published by the Geological Survey
Control by USGS and USC&GS
Topography from aerial photographs by multiplex methods
and by plane-table surveys 1952. Aerial photographs taken 1948
Polyconic projection. 1927 North American datum
10,000-foot grid based on California coordinate system, zone 1
1000-meter Universal Transverse Mercator grid ticks,
zone 10, shown in blue
To place on the predicted North American Datum 1983
move the projection lines 18 meters north and
91 meters east
Dashed landlines indicate approximate locations
Brown pattern indicates lava flows
in which contours are generalized
There may be private inholdings within the boundaries of
the National or State reservations shown on this map



ROAD CLASSIFICATION

Heavy-duty	4 LANE 6 LANE	Light-duty
Medium-duty	4 LANE 6 LANE	Unimproved dirt
U.S. Route		State Route



TIMBER MTN. CALIF.
N4130-W12115/15
1952
DMA 1767 III-SERIES V795

THIS MAP COMPLIES WITH NATIONAL MAP ACCURACY STANDARDS
FOR SALE BY U.S. GEOLOGICAL SURVEY, DENVER, COLORADO 80225, OR RESTON, VIRGINIA 22092
A FOLDER DESCRIBING TOPOGRAPHIC MAPS AND SYMBOLS IS AVAILABLE ON REQUEST

RETURN TO:
U.S. GEOLOGICAL SURVEY
TOPOGRAPHIC MAP ARCHIVES