

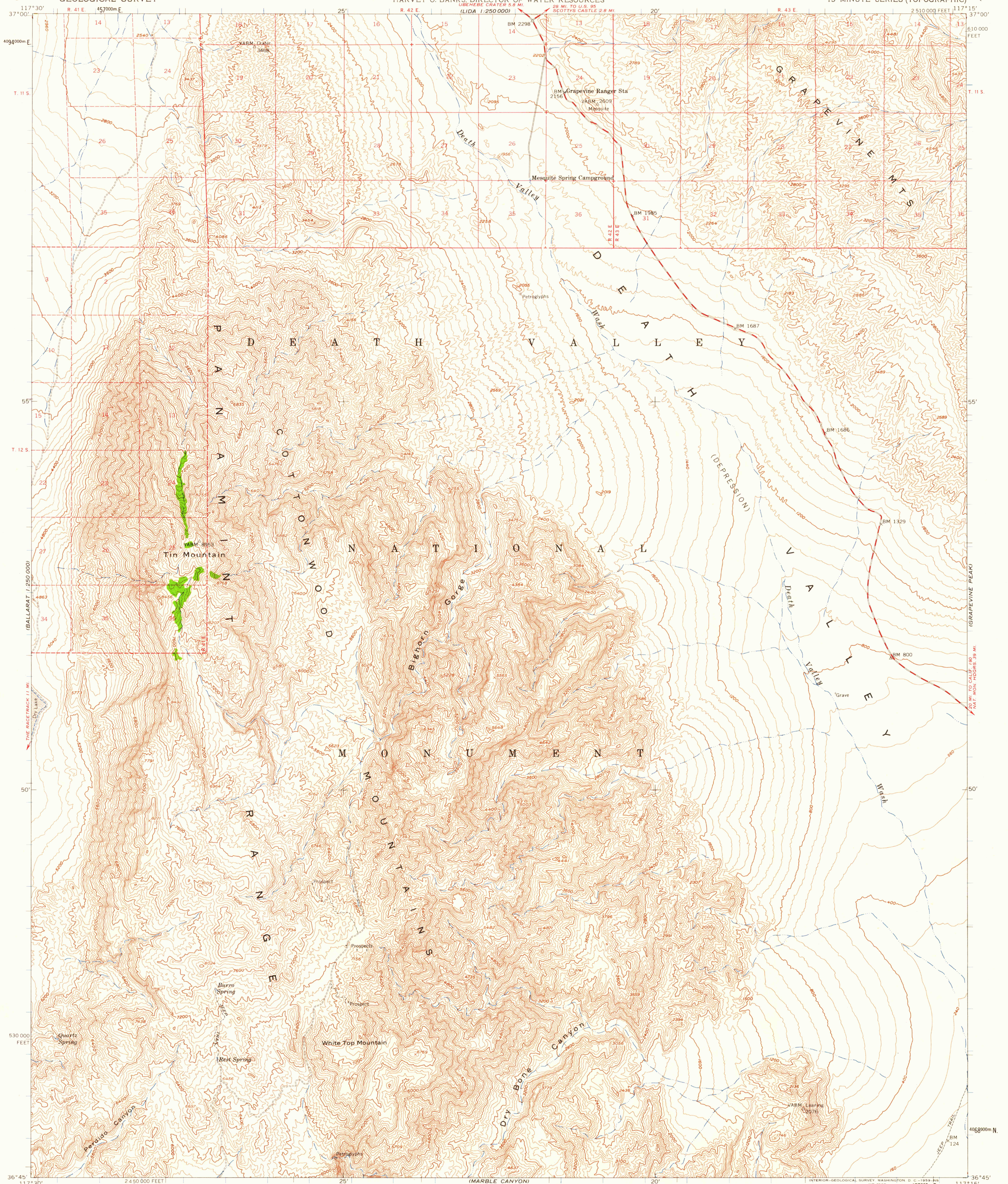
LAST CHANGE RANGE

(LIDA 1:250 000)

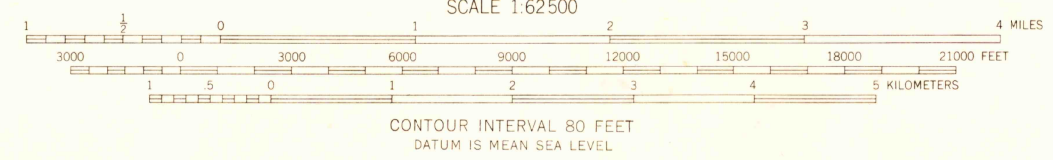
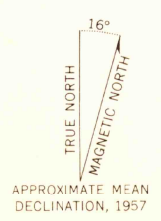
UNITED STATES  
DEPARTMENT OF THE INTERIOR  
GEOLOGICAL SURVEY

STATE OF CALIFORNIA  
EDMUND G. BROWN, GOVERNOR  
HARVEY O. BANKS, DIRECTOR OF WATER RESOURCES

TIN MOUNTAIN QUADRANGLE  
CALIFORNIA-INYO CO.  
15 MINUTE SERIES (TOPOGRAPHIC)



Mapped, edited, and published by the Geological Survey  
Control by USGS and USC&GS  
Topography from aerial photographs by ER-55 plotter  
Aerial photographs taken 1952. Advance field check 1957  
Polyconic projection: 1927 North American datum  
10,000-foot grid based on California coordinate system,  
zone 4  
1000-meter Universal Transverse Mercator grid ticks,  
zone 11, shown in blue  
Dashed land lines indicate approximate locations  
Land lines unsurveyed in T. 12 S., R. 42 and 43 E.,  
T. 13 and 14 S., R. 41, 42, and 43 E.  
and omitted in parts of T. 11 S., R. 41 E.  
because of insufficient data  
Unchecked elevations are shown in brown



THIS MAP COMPLIES WITH NATIONAL MAP ACCURACY STANDARDS  
FOR SALE BY U. S. GEOLOGICAL SURVEY, DENVER 25, COLORADO OR WASHINGTON 25, D. C.  
A FOLDER DESCRIBING TOPOGRAPHIC MAPS AND SYMBOLS IS AVAILABLE ON REQUEST

USGS  
Historical File  
Topographic Division

ROAD CLASSIFICATION  
Medium-duty ——— Light-duty ———  
Unimproved dirt =-----



U.S.G.S.  
FILE COPY  
TOPOGRAPHIC DIVISION

TIN MOUNTAIN, CALIF.  
N3645—W11715/15  
1957

JUL 17 1959

3/20