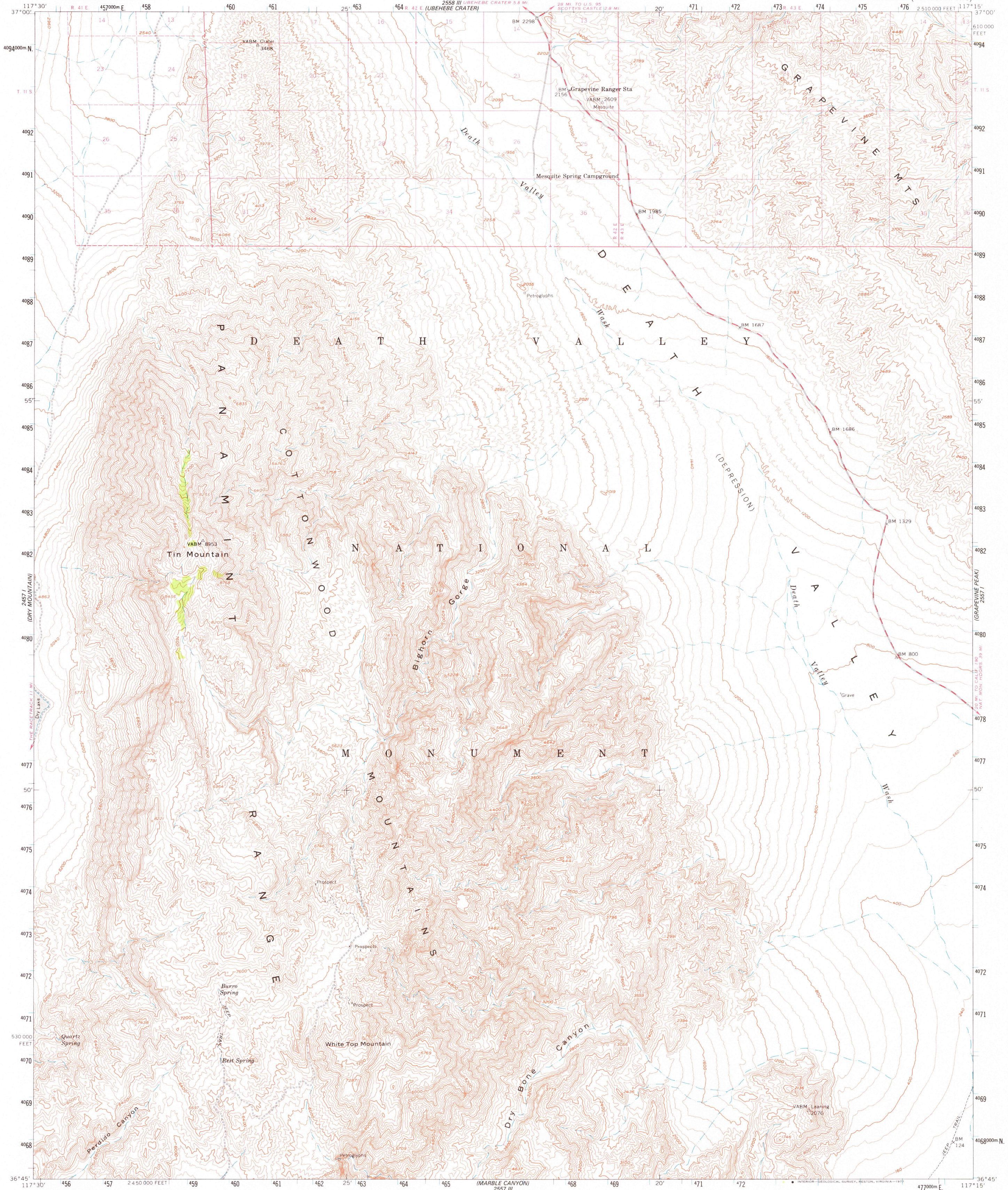
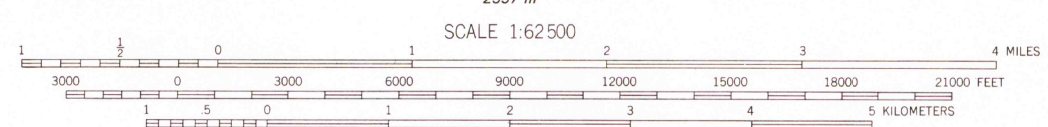
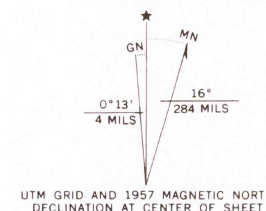


2498 II (LAST CHANGE RANGE)

2557 IV (NEW CLIP SHEET SW)
(800 MILE 2498)



Mapped, edited, and published by the Geological Survey
Control by USGS and USC&GS
Topography from aerial photographs by ER-55 plotter
Aerial photographs taken 1952. Advance field check 1957
Polyconic projection. 1927 North American datum
10,000-foot grid based on California coordinate system,
zone 4
1000-meter Universal Transverse Mercator grid ticks,
zone 11, shown in blue
Dashed land lines indicate approximate locations
Land lines unsurveyed in T. 12 S.-R. 42 and 43 E.,
T. 13 and 14 S.-R. 41, 42, and 43 E.,
and omitted in parts of T. 11 S.-R. 41 E.
because of insufficient data
Unchecked elevations are shown in brown



CONTOUR INTERVAL 80 FEET
NATIONAL GEODETIC VERTICAL DATUM OF 1929

THIS MAP COMPLIES WITH NATIONAL MAP ACCURACY STANDARDS
FOR SALE BY U. S. GEOLOGICAL SURVEY, DENVER, COLORADO 80225, OR RESTON, VIRGINIA 22092
A FOLDER DESCRIBING TOPOGRAPHIC MAPS AND SYMBOLS IS AVAILABLE ON REQUEST



TIN MOUNTAIN, CALIF.
N3645-W11715/15

USGS
Historical File
Topographic Division

1957
AMS 2557 IV-SERIES V795

JUN 22 1978

4910