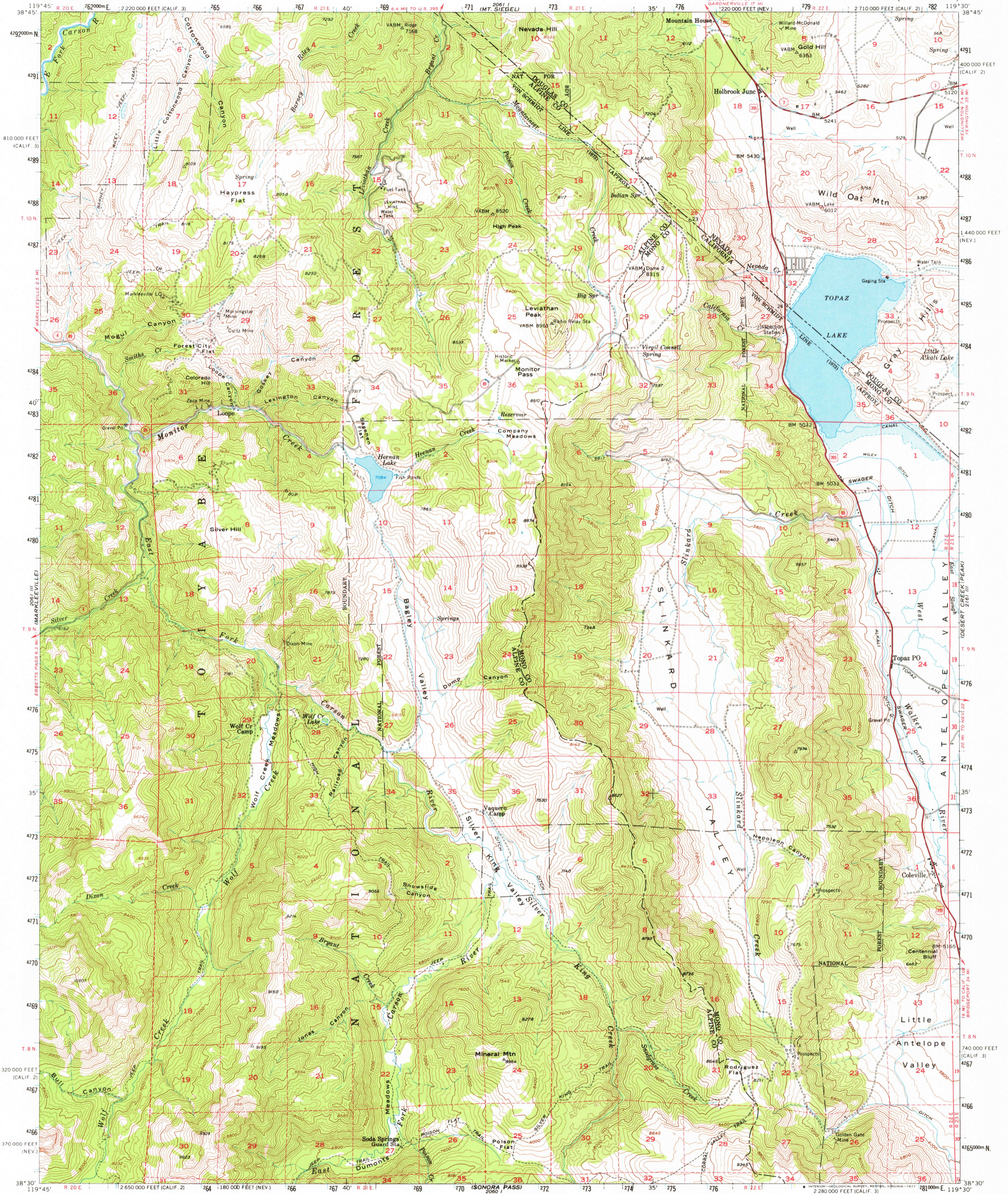
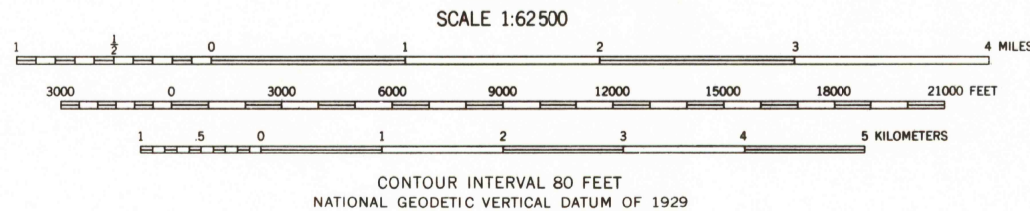
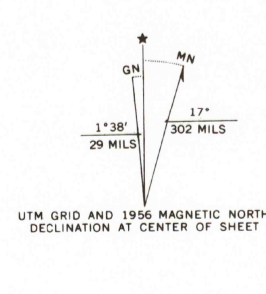


UNITED STATES
DEPARTMENT OF THE INTERIOR
GEOLOGICAL SURVEY

TOPAZ LAKE QUADRANGLE
CALIFORNIA-NEVADA
15 MINUTE SERIES (TOPOGRAPHIC)



Mapped, edited, and published by the Geological Survey
Control by USGS and USC&GS
Topography from aerial photographs by multiple methods
Aerial photographs taken 1954. Field check 1956
Polyconic projection. 1927 North American datum
10,000-foot grids based on California coordinate system,
zones 2 and 3, and Nevada coordinate system, west 2044
1000-meter Universal Transverse Mercator grid ticks,
zone 11, shown in blue
Blue hatching bordering Topaz Lake indicates area
subject to controlled inundation. Maximum elevation 5005
Dashed land lines indicate approximate locations
Unchecked elevations are shown in brown



THIS MAP COMPLIES WITH NATIONAL MAP ACCURACY STANDARDS
FOR SALE BY U.S. GEOLOGICAL SURVEY, DENVER, COLORADO 80225, OR RESTON, VIRGINIA 22092
A FOLDER DESCRIBING TOPOGRAPHIC MAPS AND SYMBOLS IS AVAILABLE ON REQUEST

ROAD CLASSIFICATION

Heavy-duty	Light-duty
Medium-duty	Unimproved dirt
U.S. Route	State Route



TOPAZ LAKE, CALIF.-NEV.
N3830-W11930/15
1956
AMS 2061 II-SERIES V795

USGS
Historical File
Topographic Division

SEP 07 1977

14,000