

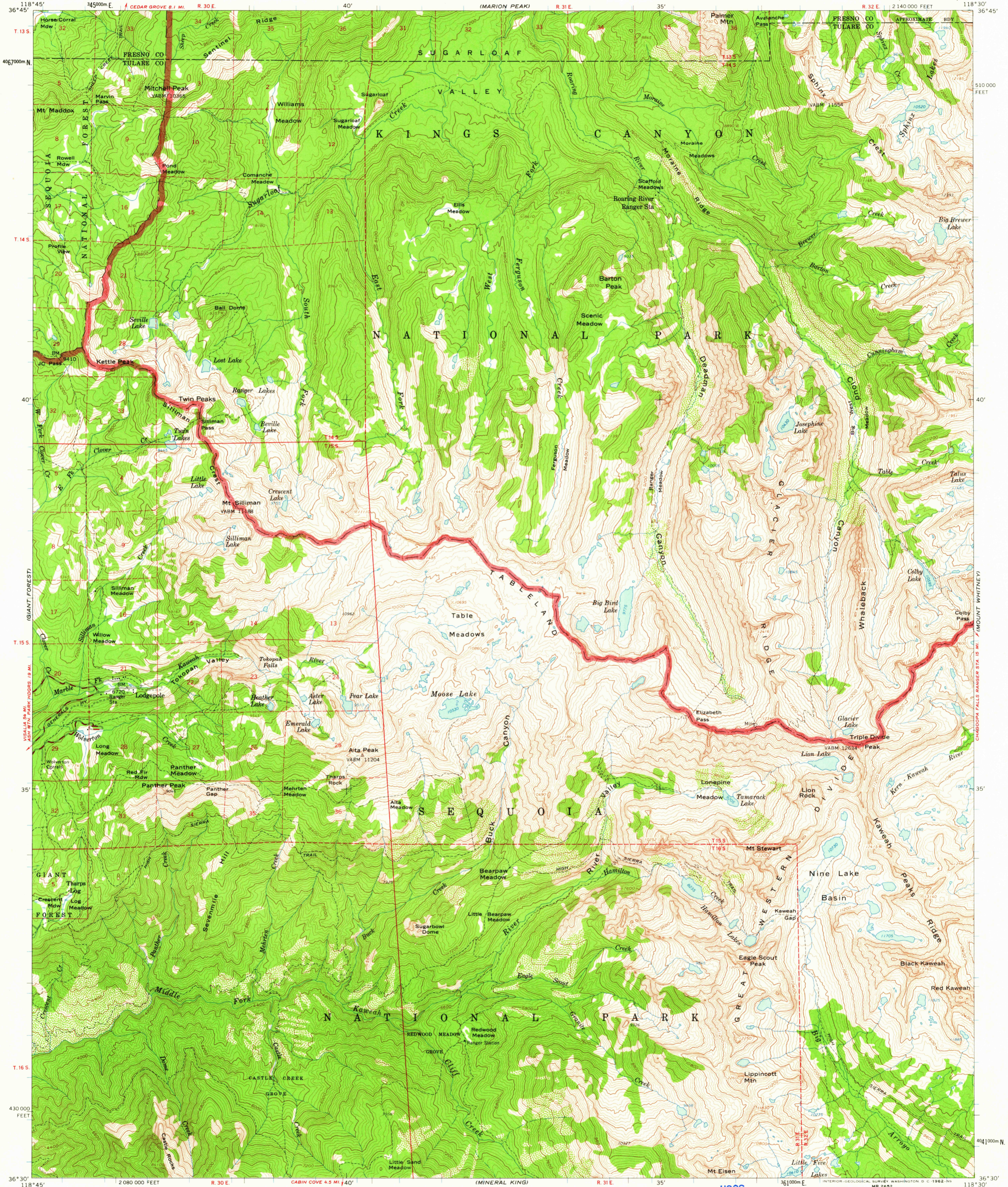
(TEHPITE DOME)

(MT. PINCHOT)

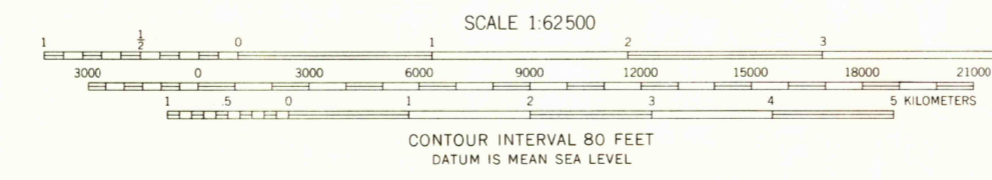
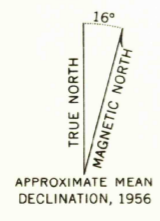
UNITED STATES  
DEPARTMENT OF THE INTERIOR  
GEOLOGICAL SURVEY

STATE OF CALIFORNIA  
EDMUND G. BROWN, GOVERNOR  
HARVEY O. BANKS, DIRECTOR OF WATER RESOURCES  
(MARION PEAK)

TRIPLE DIVIDE PEAK QUADRANGLE  
CALIFORNIA  
15 MINUTE SERIES (TOPOGRAPHIC)



Maped, edited, and published by the Geological Survey  
Control by USGS and USC&GS  
Topography from aerial photographs by photogrammetric methods  
Aerial photographs taken 1955. Advance field check 1956  
Polyconic projection. 1927 North American datum  
10,000-foot grid based on California coordinate datum, zone 4  
1000-meter Universal Transverse Mercator grid ticks,  
zone 11, shown in blue  
Land lines unsurveyed in T. 13 S.-R. 32 E.  
Land lines omitted in Ts. 14, 15, and 16 S.-Rs. 31 and 32 E.,  
and parts of Ts. 14, 15, and 16 S.-R. 30 E. because of insufficient data  
Dashed land lines indicate approximate locations  
Unchecked elevations are shown in brown and blue  
Groves indicated in various places on map are  
Sierra Redwoods-Sequoia Gigantea



USGS  
Historical File  
Topographic Division

ROAD CLASSIFICATION  
Medium-duty ——— Light-duty ———  
Unimproved dirt - - - - -



TRIPLE DIVIDE PEAK, CALIF.  
N3630-W11830/15  
1956

THIS MAP COMPLIES WITH NATIONAL MAP ACCURACY STANDARDS  
FOR SALE BY U. S. GEOLOGICAL SURVEY, DENVER 25, COLORADO OR WASHINGTON 25, D. C.  
A FOLDER DESCRIBING TOPOGRAPHIC MAPS AND SYMBOLS IS AVAILABLE ON REQUEST

4200