

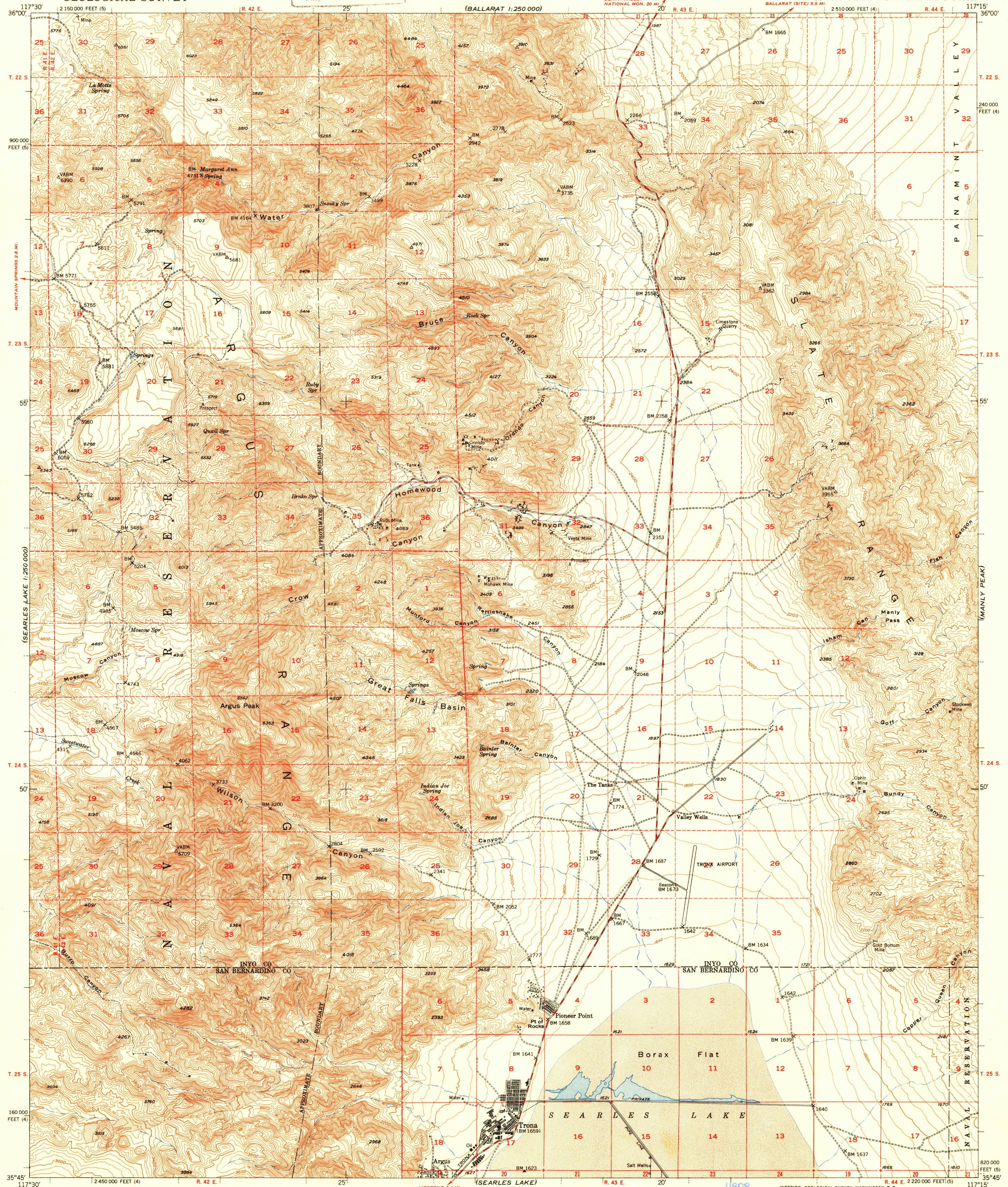
U.S.G.S. FILE COPY Inspection and Editing.

UNITED STATES DEPARTMENT OF THE INTERIOR GEOLOGICAL SURVEY

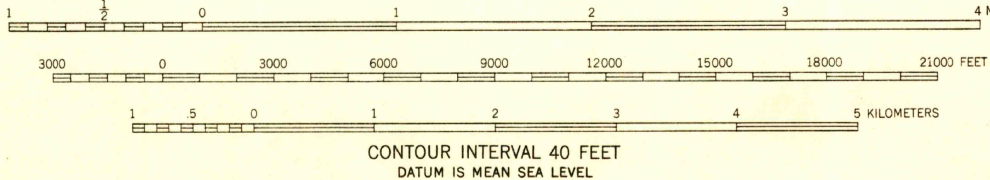
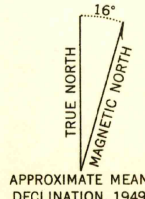
TRONA QUADRANGLE CALIFORNIA 15 MINUTE SERIES (TOPOGRAPHIC)

(BALLARAT) 1:250,000

(BALLARAT) 1:250,000



Mapped, edited, and published by the Geological Survey Control by USGS and USC&GS Topography from aerial photographs by multiplex methods Aerial photographs taken 1947. Field check 1949 Polycyclic projection. 1927 North American datum 10,000-foot grids based on California coordinate system, zones 4 and 5 Dashed land lines indicate approximate location



USGS Historical File Topographic Division

ROAD CLASSIFICATION: Heavy-duty 4 LANE ROAD Improved dirt, Medium-duty 4 LANE ROAD Unimproved dirt, Loose-surface, graded, or narrow hard-surface, U.S. Route, State Route

U.S.G.S. FILE COPY Inspection and Editing.

TRONA, CALIF. N3545-W11715/15 EDITION OF 1950

FOR SALE BY U.S. GEOLOGICAL SURVEY, FEDERAL CENTER, DENVER, COLORADO OR WASHINGTON 25, D. C. A FOLDER DESCRIBING TOPOGRAPHIC MAPS AND SYMBOLS IS AVAILABLE ON REQUEST