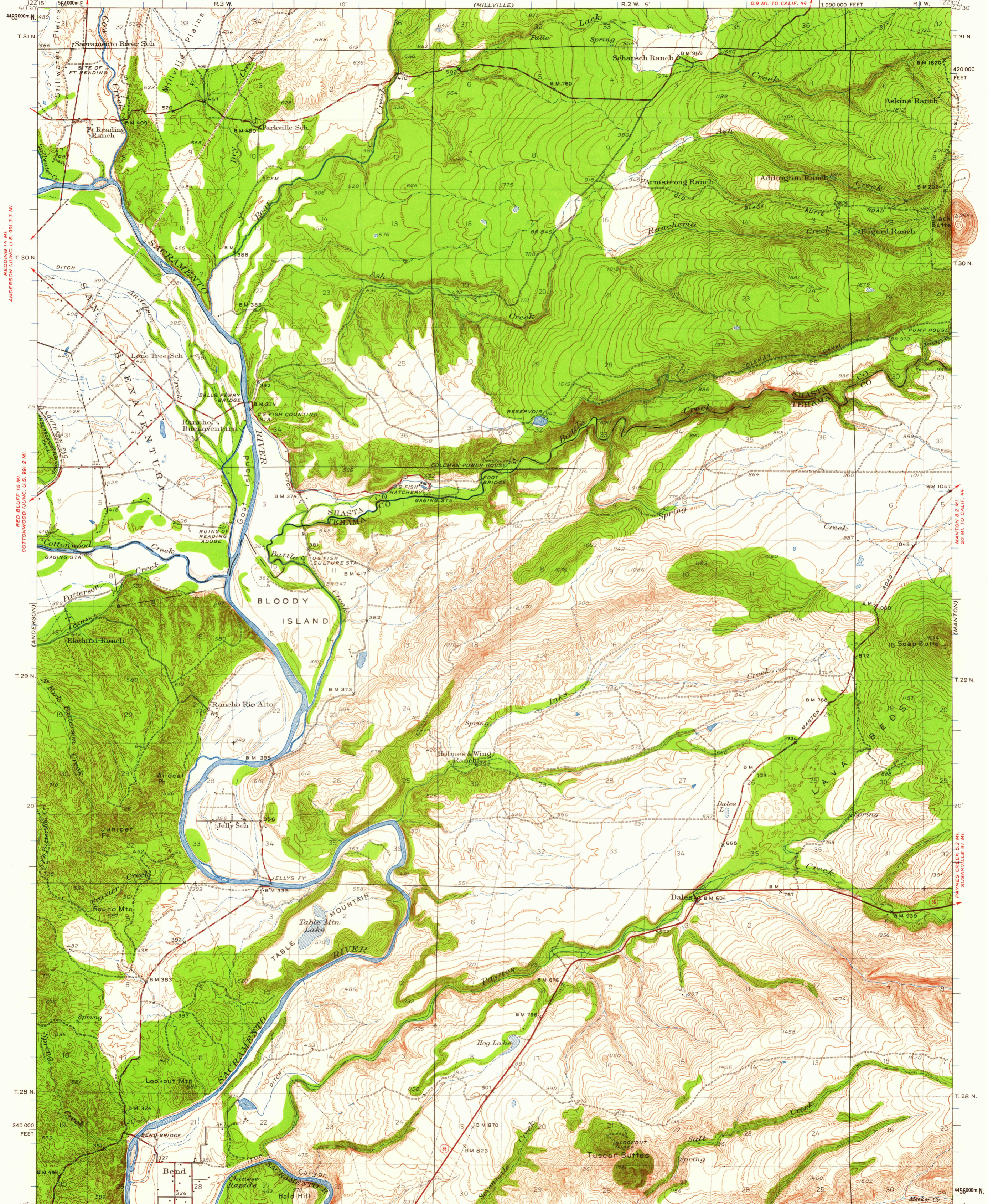


REDDING 13 MI.
PALO CEDRO (JUNC. CALIF. 44) 4.5 MI.

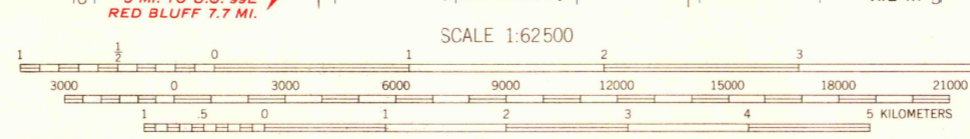
UNITED STATES
DEPARTMENT OF THE INTERIOR
GEOLOGICAL SURVEY

STATE OF CALIFORNIA
REPRESENTED BY THE
DIRECTOR OF PUBLIC WORKS

CALIFORNIA
TUSCAN BUTTES QUADRANGLE
15-MINUTE SERIES



Mapped by the Geological Survey
1943-1944
1.8 MI. TO U.S. 99
RED BLUFF 6 MI.



USGS
Historical File
Topographic Division

Polyconic projection, 1927 North American datum
10,000-foot grid based on California (1)
rectangular coordinate system
1000-meter Universal Transverse Mercator grid ticks,
zone 10, shown in blue

ROAD CLASSIFICATION
Heavy-duty ——— Light-duty ———
Medium-duty ——— Unimproved dirt ———
State Route ○

APPROXIMATE MEAN
DECLINATION, 1944

CONTOUR INTERVAL 25 FEET
DATUM IS MEAN SEA LEVEL

FOR SALE BY U.S. GEOLOGICAL SURVEY, DENVER 25, COLORADO OR WASHINGTON 25, D.C.
A FOLDER DESCRIBING TOPOGRAPHIC MAPS AND SYMBOLS IS AVAILABLE ON REQUEST

U.S.G.S.
FILE COPY
TOPOGRAPHIC DIVISION

TUSCAN BUTTES, CALIF.
N 4015—W 12200/15
1944

NOV - 7 1960

2035