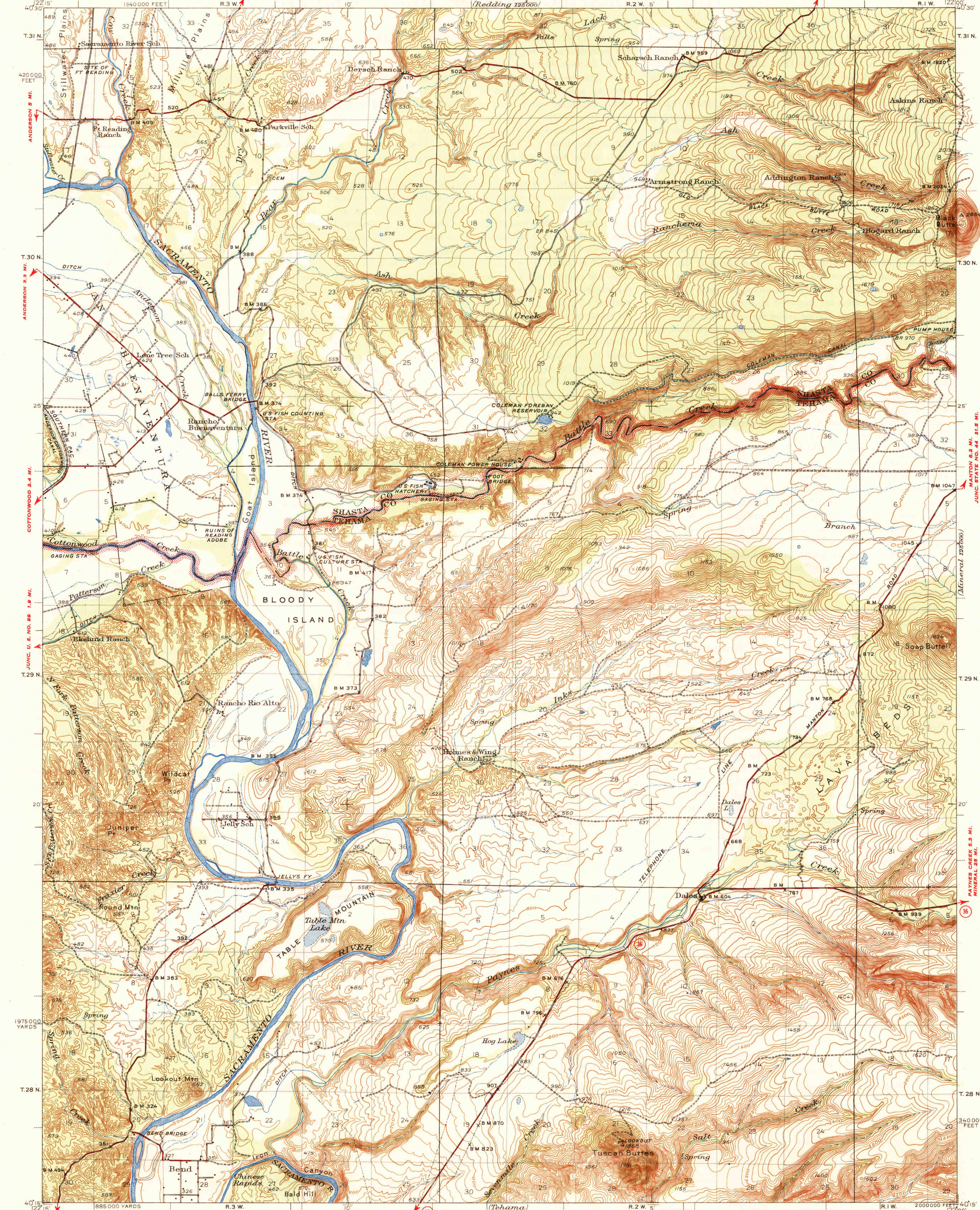


UNITED STATES
DEPARTMENT OF THE INTERIOR
GEOLOGICAL SURVEY

STATE OF CALIFORNIA
EARL WARREN, GOVERNOR
C. H. PURCELL, DIRECTOR OF PUBLIC WORKS
EDWARD HYATT, STATE ENGINEER

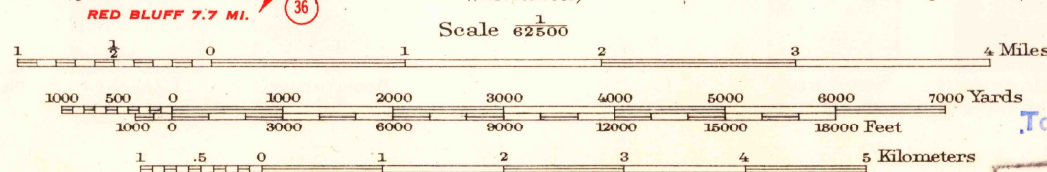
U. S. G. S.
FILE COPY
Inspection and Editing.

CALIFORNIA
TUSCAN BUTTES QUADRANGLE
JUNC. STATE NO. 44 0.9 MI. 15-MINUTE SERIES



Mapped by the Geological Survey
SHERMAN 1.3 MI. 1943-1944
RED BLUFF (VIA U. S. NO. 99) 5.3 MI.

ROAD CLASSIFICATION
1946
Dependable hard surface
Heavy-duty road
Secondary hard surface
Unsurfaced, graded
All-weather road
Dirt road
More than two lanes indicated along road with tick at point of change 3 LANE, 4 LANE
U. S. Route 15
State Route 20



USGS
Historical File
Topographic Division

U. S. G. S.
FILE COPY
Inspection and Editing.

Polyconic projection. 1927 North American datum
5000 yard grid based on U. S. zone system, G
10000 foot grid based on California (11)
rectangular coordinate system
To join Tehama map use dotted projection corners

TUSCAN BUTTES, CALIF.
Edition of 1947

N 4015-W12200/15

AUG 20 1947

3160