

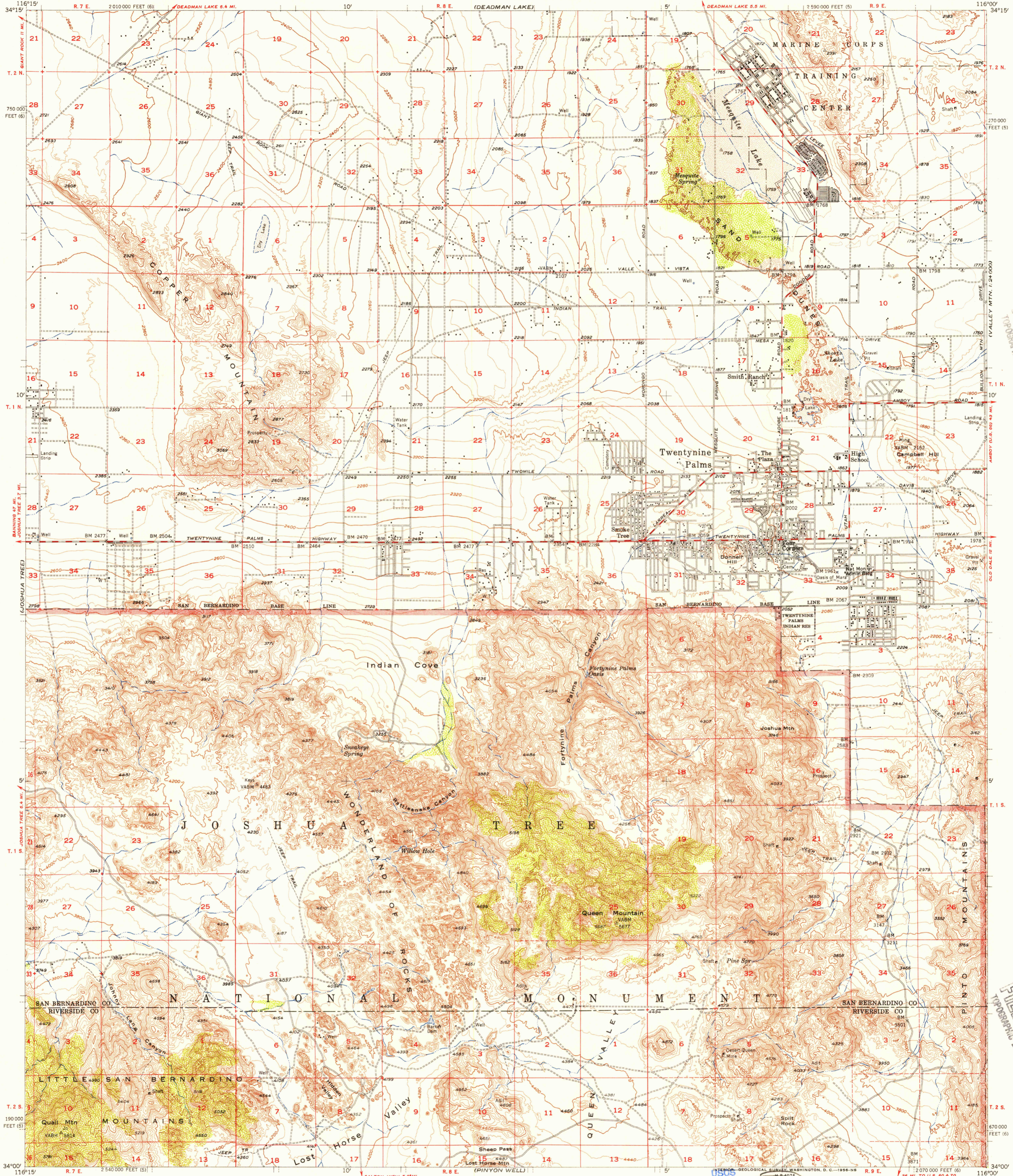
EMERSON LAKE

UNITED STATES
DEPARTMENT OF THE INTERIOR
GEOLOGICAL SURVEY

STATE OF CALIFORNIA
GOODWIN J. KNIGHT, GOVERNOR
FRANK B. DURKEE, DIRECTOR OF PUBLIC WORKS
HARVEY O. BANKS, STATE ENGINEER

TWENTYNINE PALMS QUADRANGLE
CALIFORNIA
15 MINUTE SERIES (TOPOGRAPHIC)

LEAD MTN. SW
1:24,000

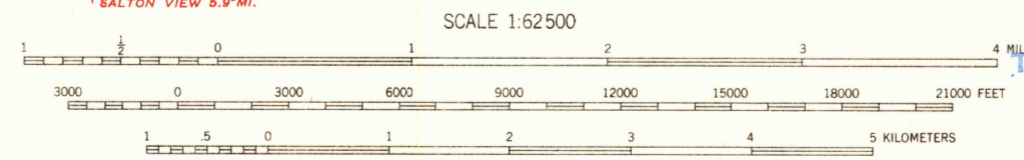


FILE COPY
TOPOGRAPHIC DIVISION

FILE COPY
TOPOGRAPHIC DIVISION

FILE COPY
TOPOGRAPHIC DIVISION

Mapped, edited, and published by the Geological Survey
Control by USGS, USC&GS, and USCE
Topography from aerial photographs by photogrammetric methods
and by planetable surveys 1954-55. Aerial photographs taken 1937 and 1952
Polyconic projection. 1927 North American datum
10,000-foot grids based on California coordinate system, zones 5 and 6
Dashed land lines indicate approximate locations



USGS
Historical File
Topographic Division

ROAD CLASSIFICATION
Heavy-duty ——— Light-duty ———
Medium-duty ——— Unimproved dirt ———
U.S. Route ——— State Route ———

The northeast quarter of this area is also covered
by 1:24,000 scale map of the Twentynine Palms
7.5 minute quadrangle, surveyed in 1955

TWENTYNINE PALMS, CALIF.
N3400—W11600/15

1955

DEC 18 1956

3670