

(BALLARAT 1:250 000)

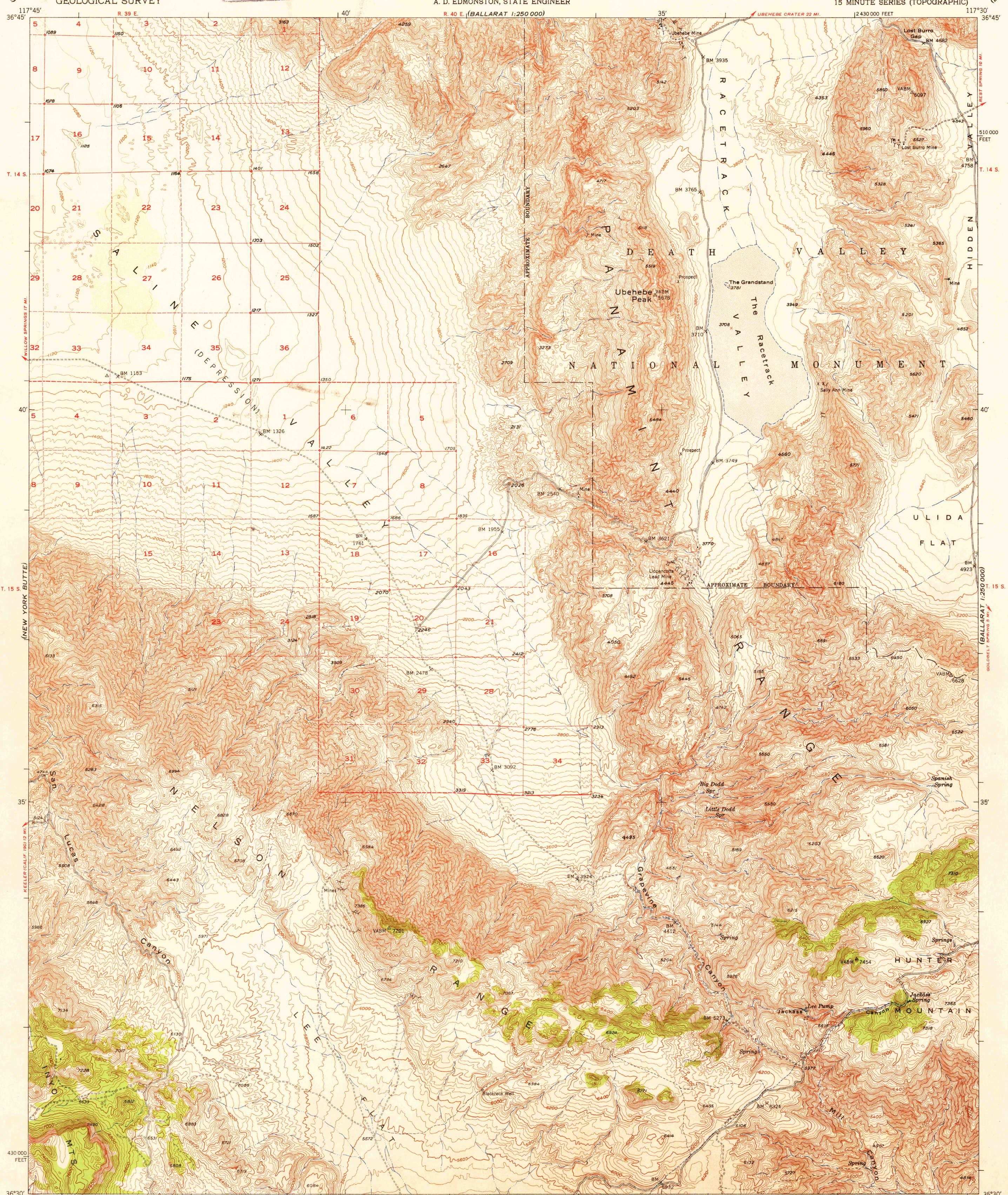
U.S.G.S.
FILE COPY
Inspection and Editing.

UNITED STATES
DEPARTMENT OF THE INTERIOR
GEOLOGICAL SURVEY

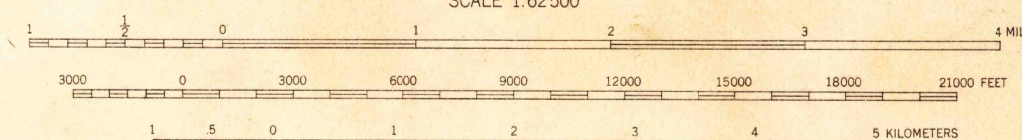
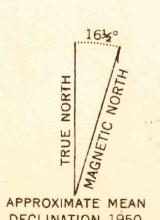
STATE OF CALIFORNIA
EARL WARREN, GOVERNOR
C. H. PURCELL, DIRECTOR OF PUBLIC WORKS
A. D. EDMONSTON, STATE ENGINEER

UBEHEBE PEAK QUADRANGLE
CALIFORNIA-INYO CO.
15 MINUTE SERIES (TOPOGRAPHIC)

(BALLARAT 1:250 000)



Maped, edited, and published by the Geological Survey
Control by USGS and USC&GS
Topography from aerial photographs by multiplex methods
and by plane-table surveys
Aerial photographs taken 1947. Field check 1950
Polyconic projection. 1927 North American datum
10,000-foot grid based on California coordinate system,
zone 4
Dashed land lines indicate approximate location



CONTOUR INTERVAL 40 FEET
DOTTED LINES REPRESENT HALF-INTERVAL CONTOURS
DATUM IS MEAN SEA LEVEL

THIS MAP COMPLIES WITH NATIONAL MAP ACCURACY STANDARDS
FOR SALE BY U. S. GEOLOGICAL SURVEY, FEDERAL CENTER, DENVER, COLORADO OR WASHINGTON 25, D. C.
A FOLDER DESCRIBING TOPOGRAPHIC MAPS AND SYMBOLS IS AVAILABLE ON REQUEST

USGS
Historical File
Topographic Division

ROAD CLASSIFICATION
Heavy-duty... 4 LANE 16 LANE Light-duty...
Medium-duty... 4 LANE 16 LANE Unimproved dirt...
U. S. Route State Route

U.S.G.S.
FILE COPY
Inspection and Editing.

UBEHEBE PEAK, CALIF.
N3630-W11730/15
EDITION OF 1951

(BALLARAT 1:250 000)

AUG 16 1951 320