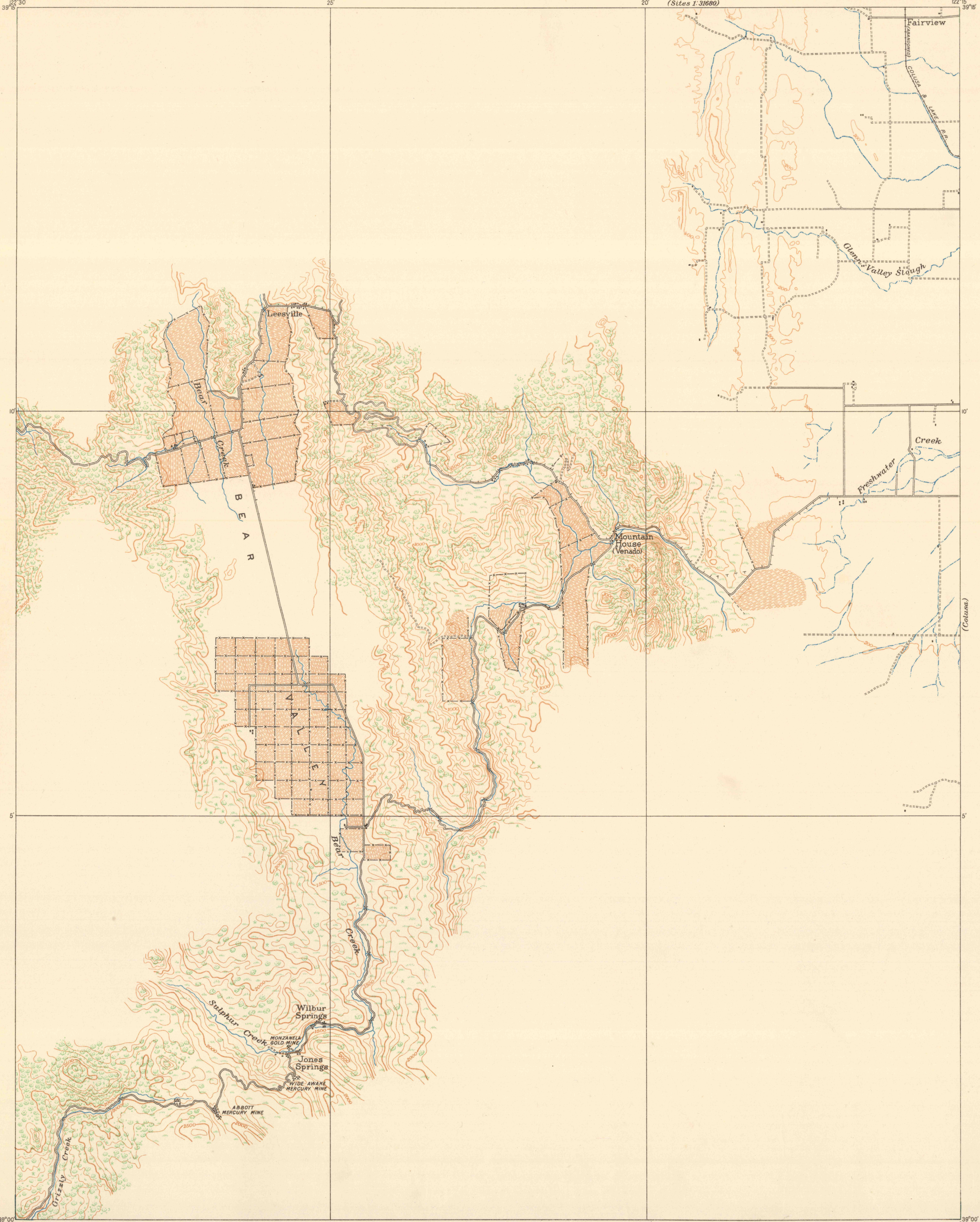


CONTROLLED
RECONNAISSANCE SHEET
30-S-IV-W/2

CORPS OF ENGINEERS, U. S. ARMY
PROGRESSIVE MILITARY MAP

CALIFORNIA
VENADO QUADRANGLE

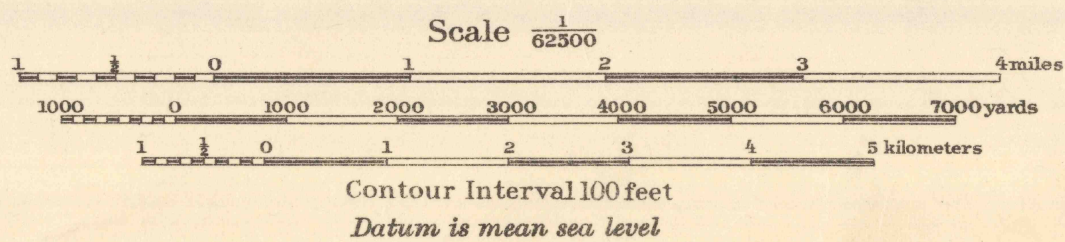


Coled
✓
✓

Field work and compilation under the direction of Col. Chas. L. Potter, Corps of Engineers, U. S. A. Department Engineer, Western Department. 1916
Field work under the immediate supervision of Capt. R. Park, C. of E., Topographical Inspector, 1st. Lieut. Rufus W. Putnam, C. of E., and Sgt. Fritz School, Co. F, 2nd. Engineers.
Control from U.S.C. & G.S. and Co. F, 2nd. Eng'rs.

FILE COPY

MAP INFORMATION OFFICE
GEOLOGICAL SURVEY



NOTE: OFFICERS USING THIS MAP WILL MARK HEREON CORRECTIONS AND ADDITIONS WHICH COME TO THEIR ATTENTION AND MAIL DIRECT TO "THE CHIEF OF ENGINEERS, WASHINGTON, D.C."

Engineer Reproduction Plant, U. S. Army, Washington Barracks, D.C. 1920

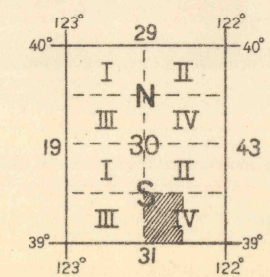


TABLE NORTH
MAGNETIC NORTH
APPROXIMATE MEAN
DECLINATION 1920

Nace
Wilbur Springs

VENADO, CALIF.

*Controlled by
Wilbur Springs
65 42*