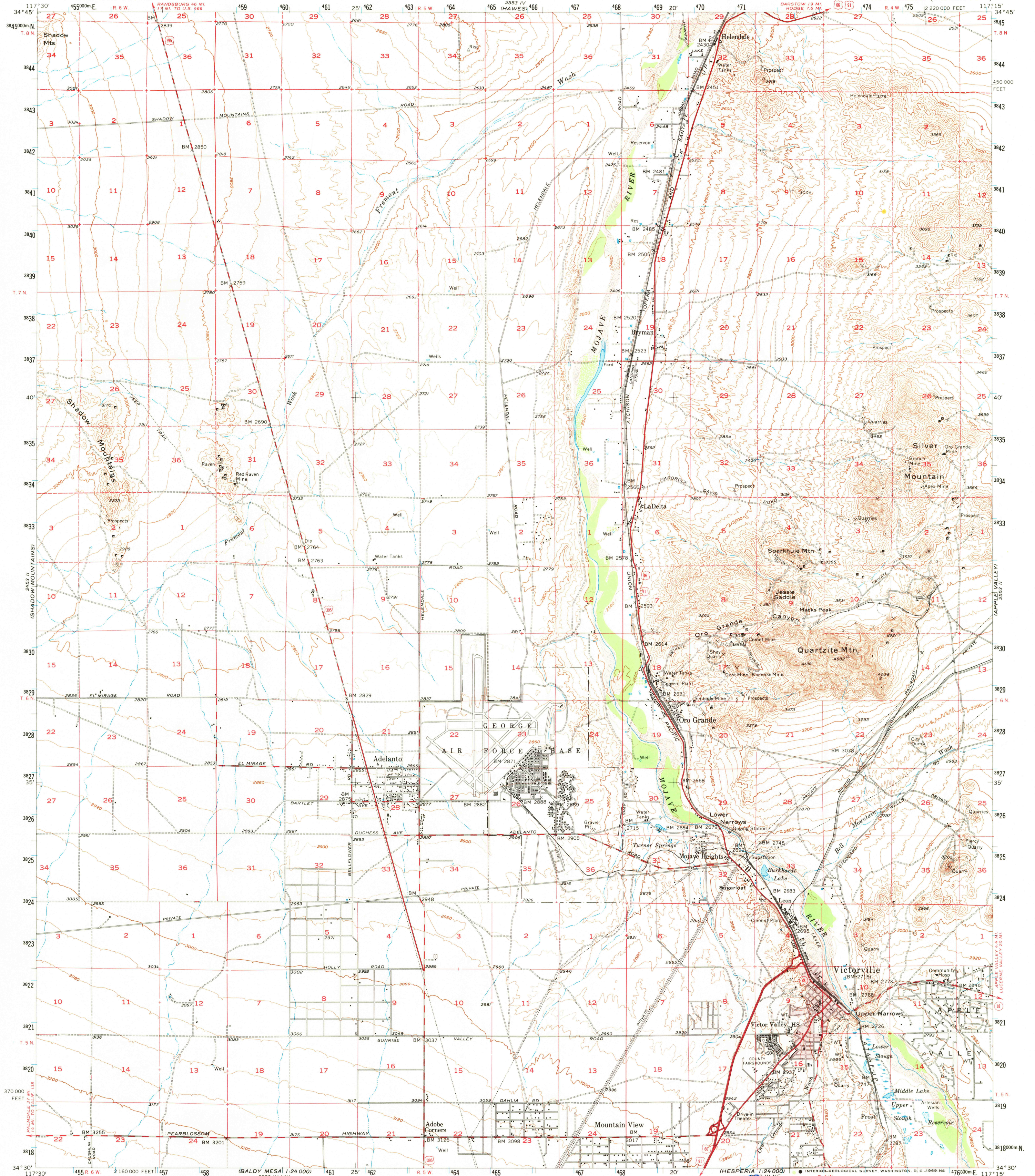
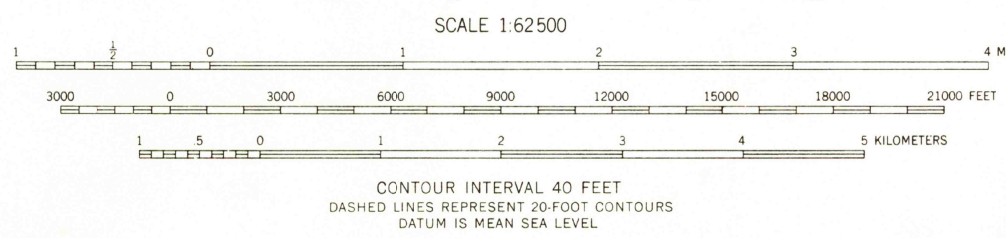
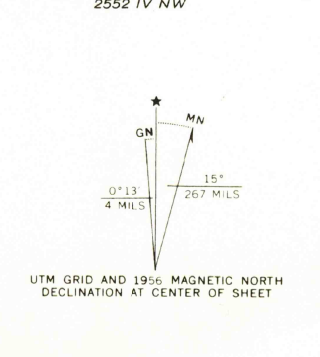


UNITED STATES
DEPARTMENT OF THE INTERIOR
GEOLOGICAL SURVEY

VICTORVILLE QUADRANGLE
CALIFORNIA—SAN BERNARDINO CO.
15 MINUTE SERIES (TOPOGRAPHIC)



Maped, edited, and published by the Geological Survey
Control by USGS, USC&GS, and USCE
Compiled in 1957 from 1:24 000 scale maps of the Helendale,
Victorville NW, Adelanto, and Victorville
7.5 minute quadrangles, surveyed 1956
Topography from aerial photographs by Wild A-8 plotter
and by planetable surveys 1956. Aerial photographs taken 1952
Polyconic projection. 1927 North American datum
10,000-foot grid based on California coordinate system,
zone 5
1000-meter Universal Transverse Mercator grid ticks,
zone 11, shown in blue
Dashed land lines indicate approximate locations
Unchecked elevations are shown in brown



U.S.G.S. TOPOGRAPHIC DIVISION
U.S. Route State Route
ROAD CLASSIFICATION
Heavy-duty Light-duty
Medium-duty Unimproved dirt

U.S. GEOLOGICAL SURVEY WASHINGTON, D.C. 20508
THIS AREA ALSO COVERED BY 1:24 000 SCALE MAPS OF
HELENDALE, VICTORVILLE NW, ADELANTO, AND
VICTORVILLE 7.5-MINUTE QUADRANGLES, SURVEYED 1956
VICTORVILLE, CALIF. N3430—W11715/15
1956
AMS 2553 III—SERIES V795

Historical File
Topographic Division

APR 8 1968

8930

THIS MAP COMPLIES WITH NATIONAL MAP ACCURACY STANDARDS
FOR SALE BY U. S. GEOLOGICAL SURVEY, DENVER, COLORADO 80225 OR WASHINGTON, D. C. 20242
A FOLDER DESCRIBING TOPOGRAPHIC MAPS AND SYMBOLS IS AVAILABLE ON REQUEST