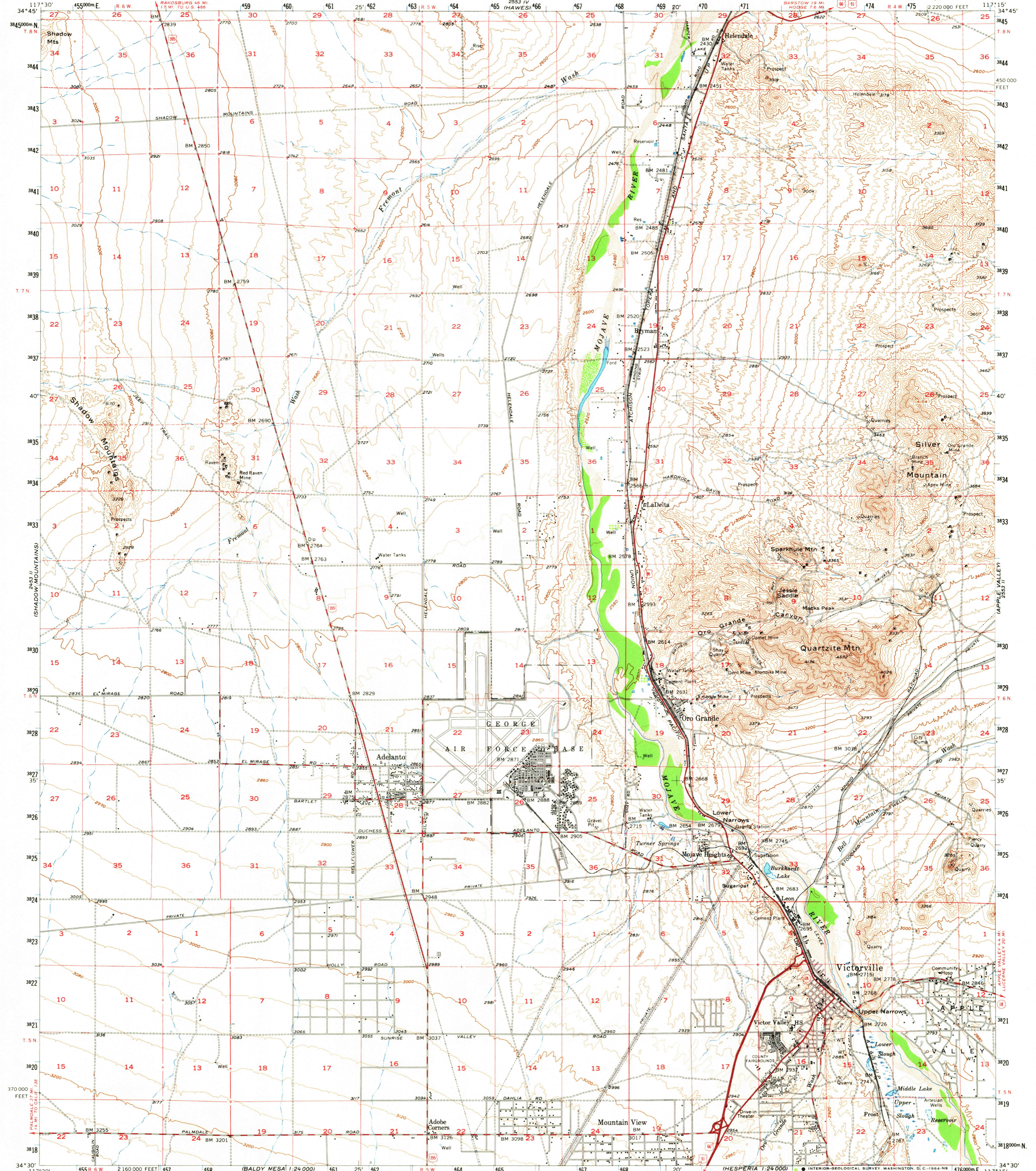
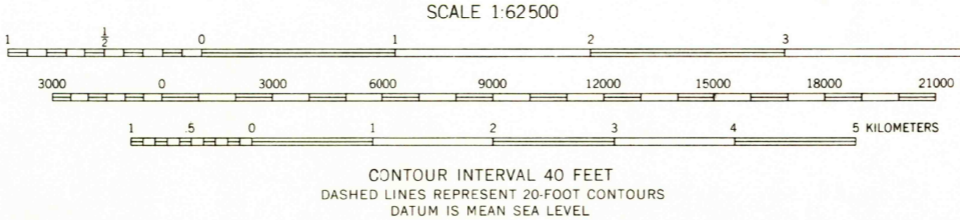


UNITED STATES  
DEPARTMENT OF THE INTERIOR  
GEOLOGICAL SURVEY

VICTORVILLE QUADRANGLE  
CALIFORNIA—SAN BERNARDINO CO.  
15 MINUTE SERIES (TOPOGRAPHIC)



Mapped, edited, and published by the Geological Survey  
Control by USGS, USO&GS, and USCE  
Compiled in 1957 from 1:24 000 scale maps of the Helendale,  
Victorville NW, Adelanto, and Victorville  
7.5 minute quadrangles, surveyed 1956  
Topography from aerial photographs by Wild A-8 plotter and  
by planetable surveys 1956. Aerial photographs taken 1952  
Polyconic projection. 1927 North American datum  
10,000-foot grid based on California coordinate system,  
zone 5  
1000-meter Universal Transverse Mercator grid ticks,  
zone 11, shown in blue  
Dashed land lines indicate approximate locations  
Unchecked elevations are shown in brown



ROAD CLASSIFICATION  
Heavy-duty ——— Light-duty ———  
Medium-duty ——— Unimproved dirt ———  
U.S. Route ——— State Route ———

U.S.G.S.  
FILE COPY  
TOPOGRAPHIC DIVISION

THIS MAP COMPLIES WITH NATIONAL MAP ACCURACY STANDARDS  
FOR SALE BY U. S. GEOLOGICAL SURVEY, DENVER 25, COLORADO OR WASHINGTON 25, D. C.  
A FOLDER DESCRIBING TOPOGRAPHIC MAPS AND SYMBOLS IS AVAILABLE ON REQUEST

This area also covered by 1:24 000 scale maps of  
Helendale, Victorville NW, Adelanto, and  
Victorville 7.5 minute quadrangles, surveyed 1956  
VICTORVILLE, CALIF.  
N3430—W11715/15

1956  
AMS 2553 III—SERIES V795

DEC 9 1964

2230