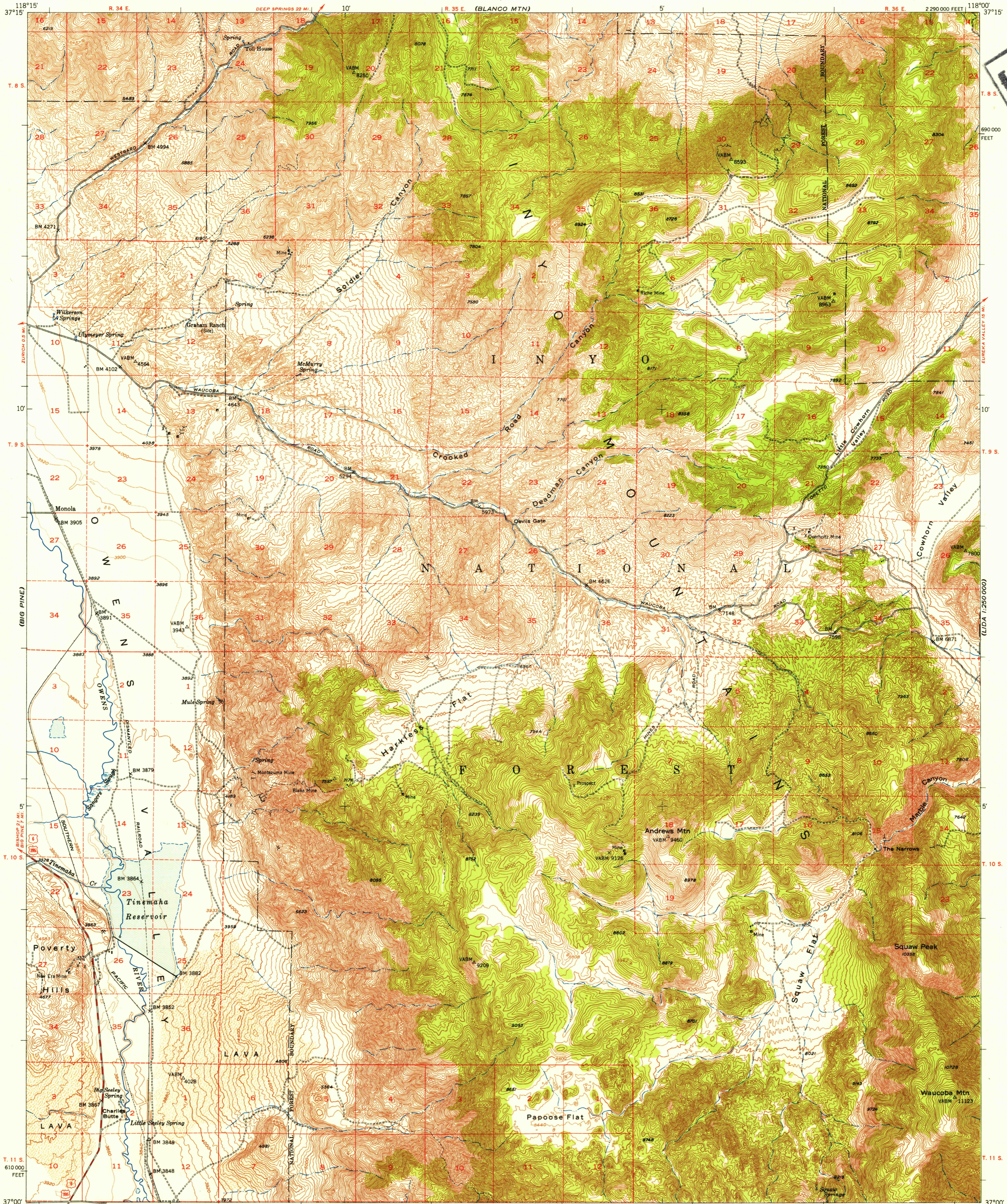
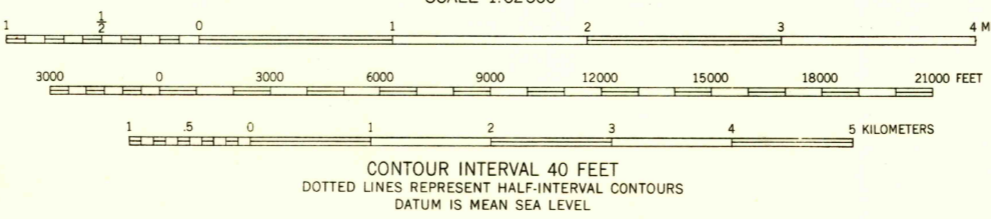
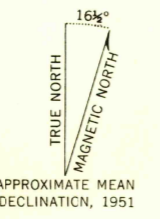


(LIDA 1:250 000)



FILE COPY
Inspection and Editing

118°15' 37°15' Mapped, edited, and published by the Geological Survey
Control by USGS, USC&GS, and City of Los Angeles
Topography from aerial photographs by multiplex methods
and by plane-table surveys 1951. Aerial photographs taken 1947
Polyconic projection. 1927 North American datum
10,000-foot grid based on California coordinate system, zone 4
Dashed land lines indicate approximate locations
Unchecked elevations are shown in brown



USGS
Historical File
Topographic Division

ROAD CLASSIFICATION

Heavy-duty	4 LANE 16 LANE	Light-duty
Medium-duty	4 LANE 16 LANE	Unimproved dirt

U. S. Route State Route



FILE COPY
Inspection and Editing

WAUCOBA MTN., CALIF.
N3700-W11800/15
1951

THIS MAP COMPLIES WITH NATIONAL MAP ACCURACY STANDARDS
FOR SALE BY U. S. GEOLOGICAL SURVEY, FEDERAL CENTER, DENVER, COLORADO OR WASHINGTON 25, D. C.
A FOLDER DESCRIBING TOPOGRAPHIC MAPS AND SYMBOLS IS AVAILABLE ON REQUEST

AUG 6 1953
3130