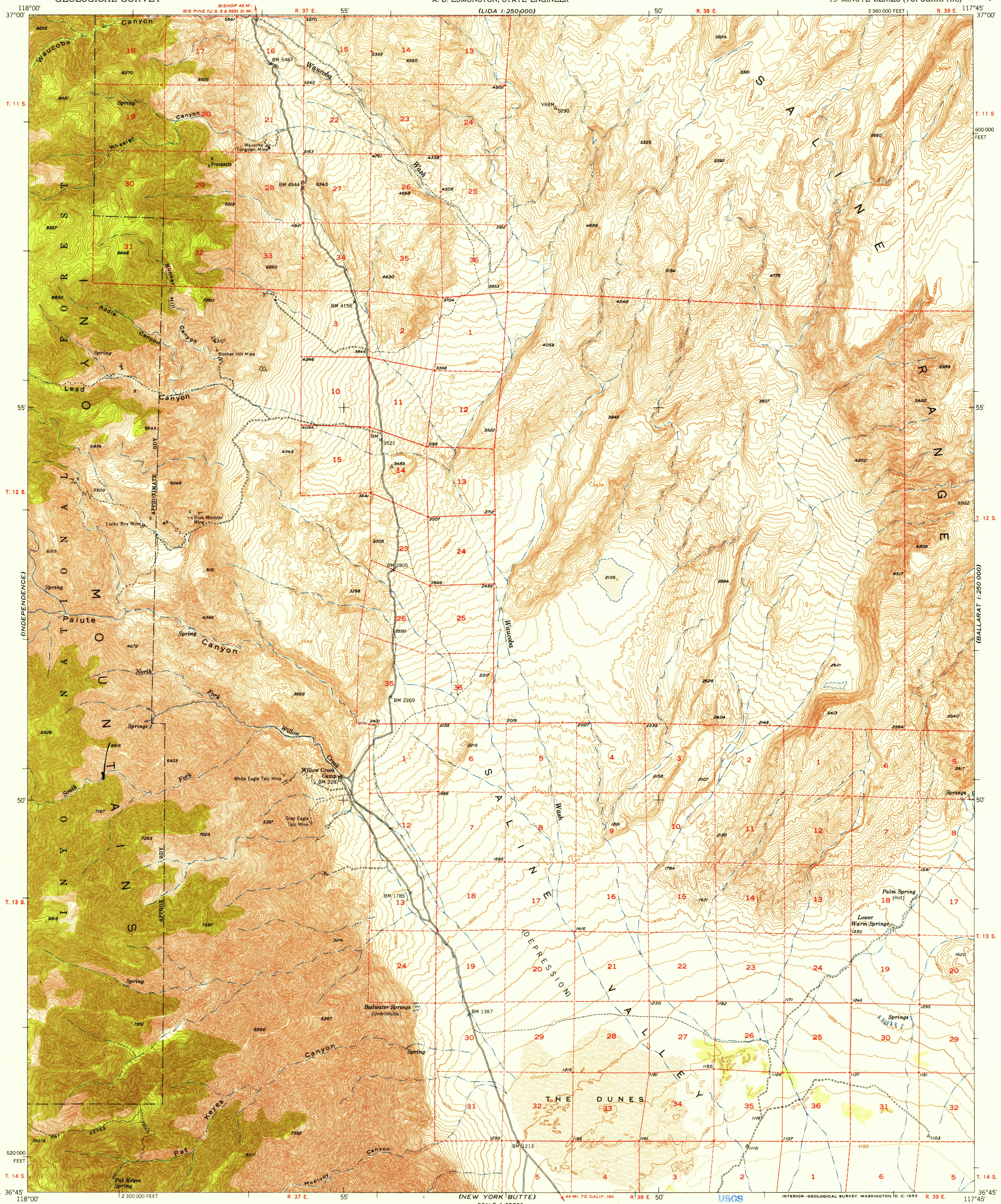


U. S. G. S.
FILE COPY
Inspection and Rating.

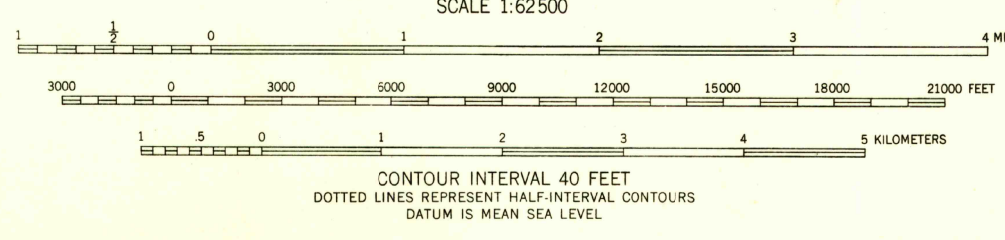
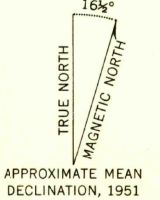
UNITED STATES
DEPARTMENT OF THE INTERIOR
GEOLOGICAL SURVEY

STATE OF CALIFORNIA
EARL WARREN, GOVERNOR
FRANK B. DURKEE, DIRECTOR OF PUBLIC WORKS
A. D. EDMONSTON, STATE ENGINEER

WAUCOBA WASH QUADRANGLE
CALIFORNIA-INYO CO.
15 MINUTE SERIES (TOPOGRAPHIC)



Mapped, edited, and published by the Geological Survey
Control by USGS and USC&GS
Topography from aerial photographs by multiplex methods
and by plane-table surveys 1951. Aerial photographs taken 1947
Polyconic projection. 1927 North American datum
10,000-foot grid based on California coordinate system, zone 4
Dashed land lines indicate approximate locations
Unchecked elevations are shown in brown



USGS
Historical File
Topographic Division

ROAD CLASSIFICATION
Heavy-duty 4 LANE 16 LANE Light-duty
Medium-duty 4 LANE 16 LANE Unimproved dirt
U. S. Route State Route

THIS MAP COMPLIES WITH NATIONAL MAP ACCURACY STANDARDS
FOR SALE BY U. S. GEOLOGICAL SURVEY, FEDERAL CENTER, DENVER, COLORADO OR WASHINGTON 25, D. C.
A FOLDER DESCRIBING TOPOGRAPHIC MAPS AND SYMBOLS IS AVAILABLE ON REQUEST



U. S. G. S.
FILE COPY
Inspection and Rating.

WAUCOBA WASH, CALIF.
N3645-W11745/15
1951

FEB 13 1953

3173