

(FORTUNA)

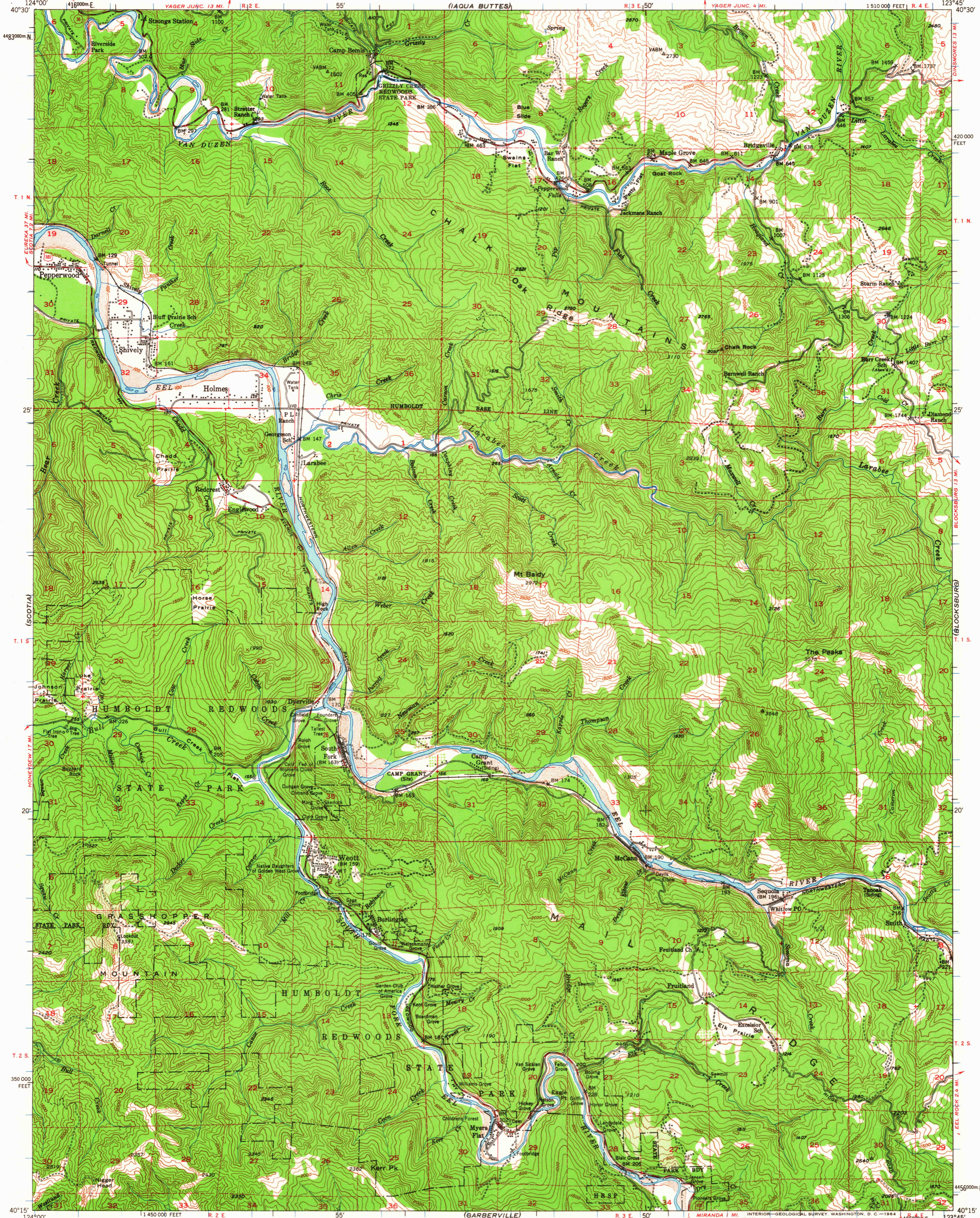
FORTUNA 15 MI.  
CARLOTTA 5.6 MI.  
UNITED STATES  
DEPARTMENT OF THE INTERIOR  
GEOLOGICAL SURVEY

UNITED STATES  
DEPARTMENT OF THE ARMY  
CORPS OF ENGINEERS

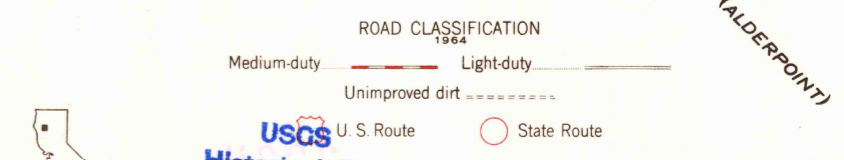
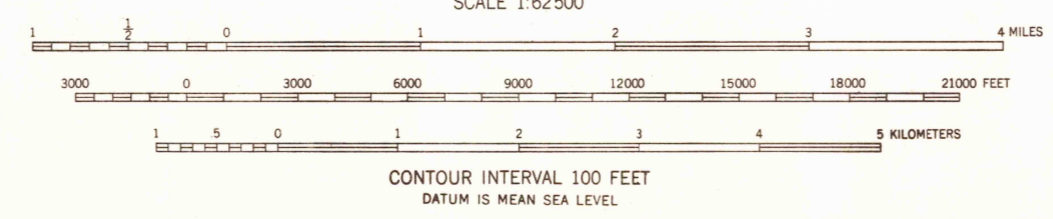
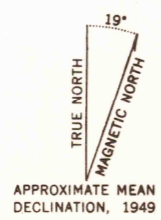
STATE OF CALIFORNIA  
DEPARTMENT OF WATER RESOURCES

WEOTT QUADRANGLE  
CALIFORNIA-HUMBOLDT CO.  
15 MINUTE SERIES (TOPOGRAPHIC)

(PILOT CREEK)



Mapped by the Army Map Service  
Field inspected, edited, and published by the Geological Survey  
Control by USGS, USC&GS, and US Army  
Topography from aerial photographs by multiplex methods  
Aerial photographs taken 1941-1942. Field check 1949  
Polyconic projection. 1927 North American datum  
10,000-foot grid based on California coordinate system,  
zone 1  
Dashed land lines indicate approximate location  
1000-meter Universal Transverse Mercator grid ticks,  
zone 10, shown in blue



USGS  
Historical File  
Topographic Division

WEOTT, CALIF.  
N4015-W12345/15  
1949

FOR SALE BY U. S. GEOLOGICAL SURVEY, DENVER 25, COLORADO OR WASHINGTON 25, D. C.  
A FOLDER DESCRIBING TOPOGRAPHIC MAPS AND SYMBOLS IS AVAILABLE ON REQUEST

3200  
MAY 5 1964