

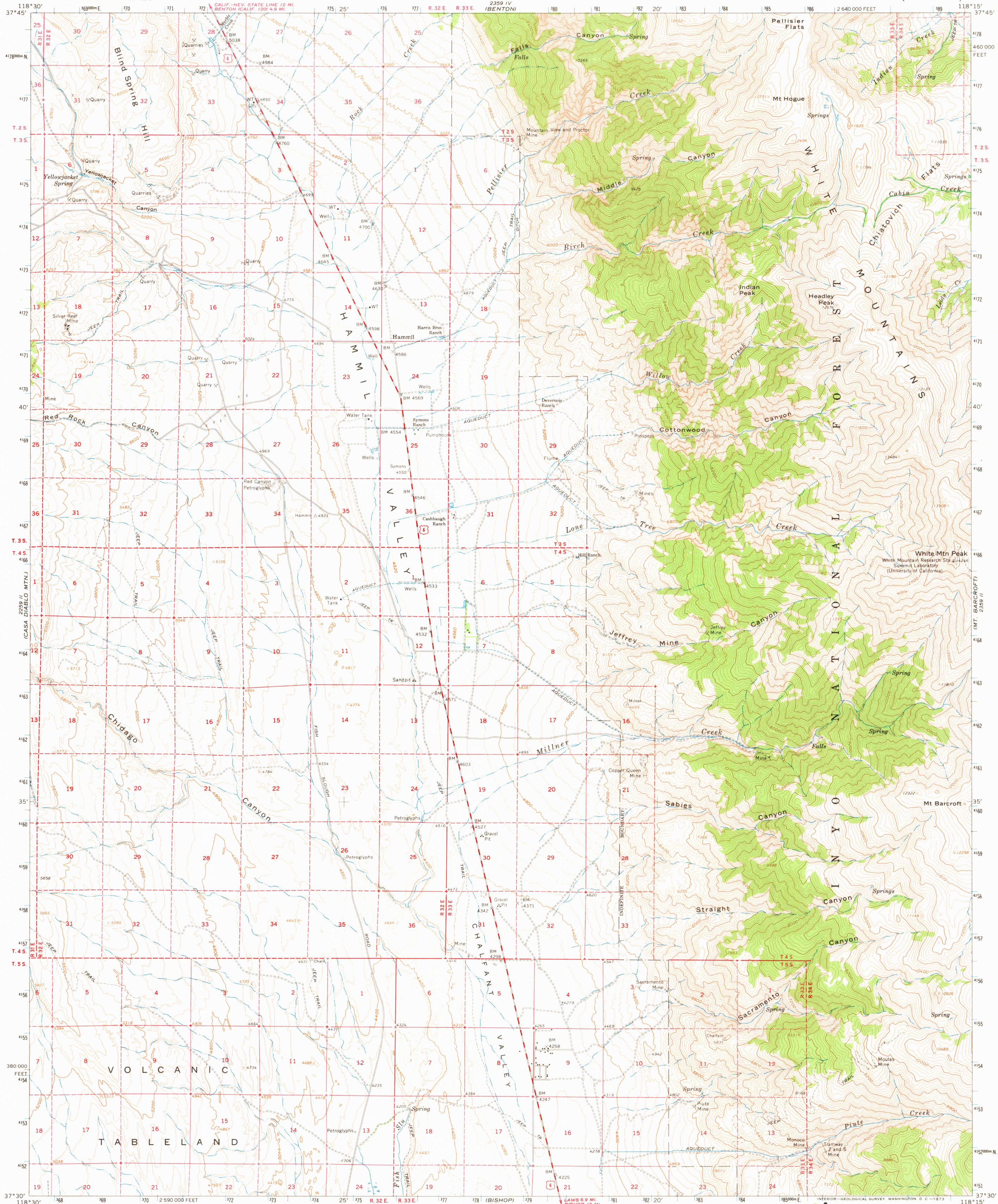
GLASS MTN.
2259 I

UNITED STATES
DEPARTMENT OF THE INTERIOR
GEOLOGICAL SURVEY

STATE OF CALIFORNIA
DEPARTMENT OF WATER RESOURCES

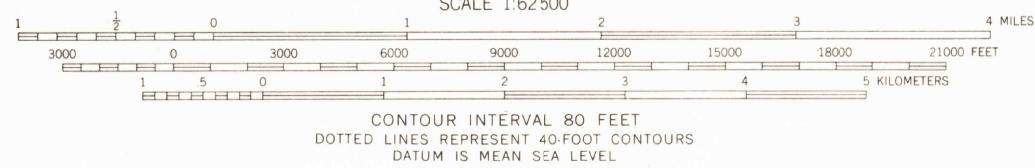
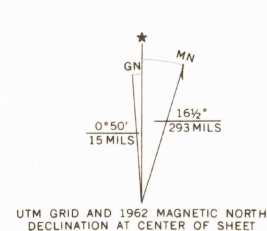
WHITE MTN. PEAK QUADRANGLE
CALIFORNIA—MONO CO.
15 MINUTE SERIES (TOPOGRAPHIC)

2259 I
IDAHO MTN.



(MT TOMI
2259 I

Mapped, edited, and published by the Geological Survey
Control by USGS, USC&GS, and USCE
Topography by photogrammetric methods from aerial
photographs taken 1954. Field checked 1962
Polyconic projection. 1927 North American datum
10,000-foot grid based on California coordinate system, zone 3
1000-meter Universal Transverse Mercator grid ticks,
zone 11, shown in blue
Where omitted, land lines have not been established
or are not shown because of insufficient data



THIS MAP COMPLIES WITH NATIONAL MAP ACCURACY STANDARDS
FOR SALE BY U. S. GEOLOGICAL SURVEY, DENVER, COLORADO 80225 OR WASHINGTON, D. C. 20242
A FOLDER DESCRIBING TOPOGRAPHIC MAPS AND SYMBOLS IS AVAILABLE ON REQUEST



ROAD CLASSIFICATION
Medium-duty ——— Light-duty ———
Unimproved dirt ———
U.S. Route

WHITE MTN. PEAK, CALIF.
N3730—W11815/15

1962
AMS 2359 III—SERIES V795

USGS
HISTORICAL FILE
TOPOGRAPHIC DIVISION

7290
FEB 2 1 1973