

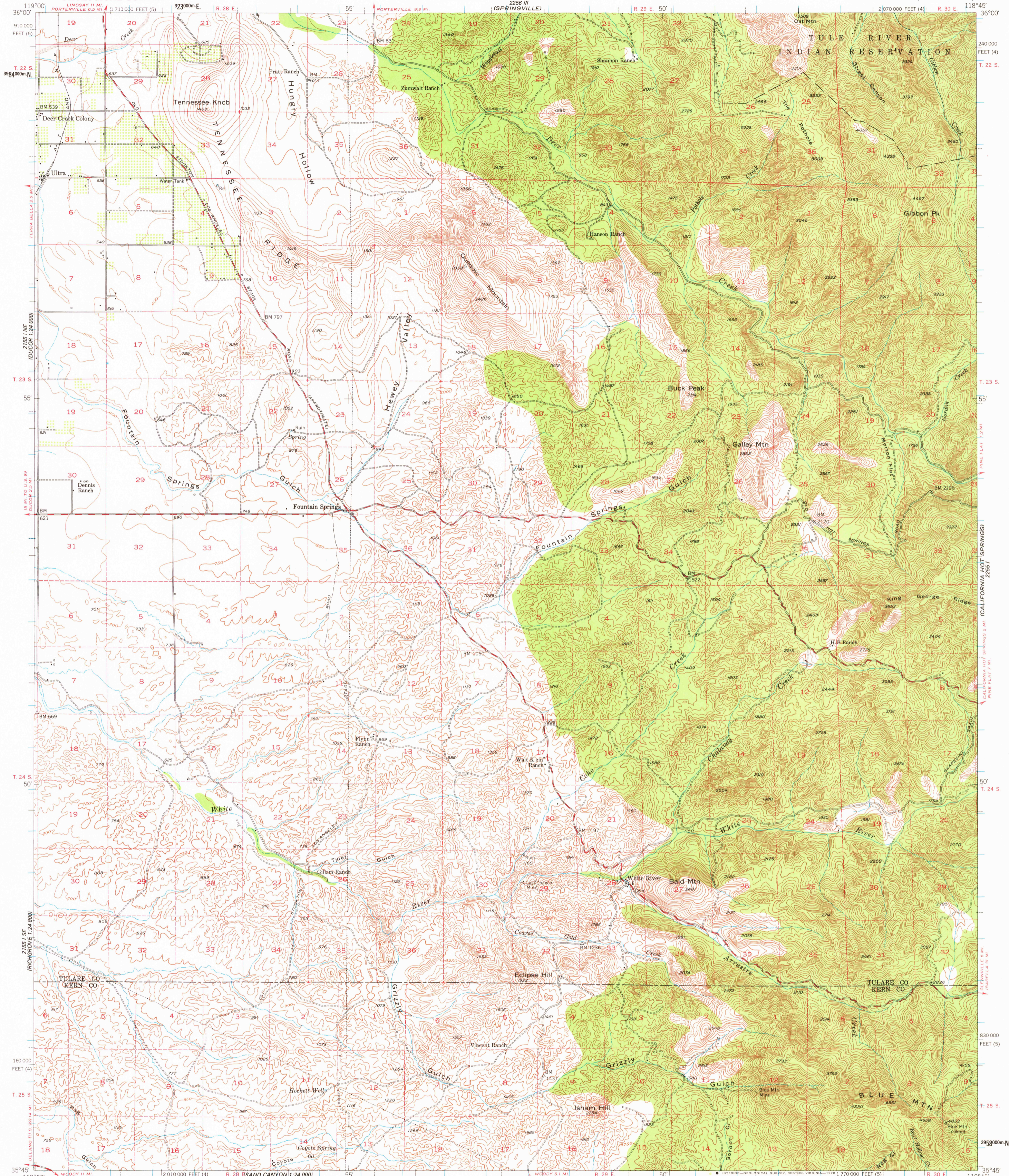
2256 IV SE  
PORTERVILLE  
1:24,000

UNITED STATES  
DEPARTMENT OF THE INTERIOR  
GEOLOGICAL SURVEY

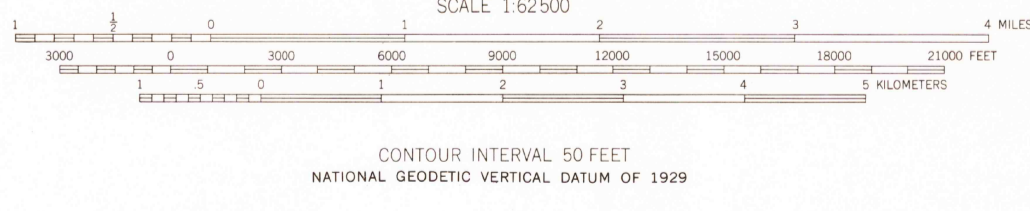
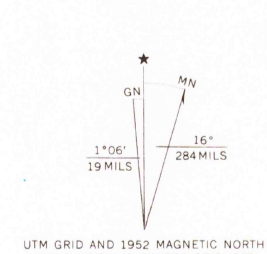
STATE OF CALIFORNIA  
DEPARTMENT OF WATER RESOURCES  
(SPRINGVILLE)

WHITE RIVER QUADRANGLE  
CALIFORNIA  
15 MINUTE SERIES (TOPOGRAPHIC)

2256 IV  
CAMP NELSON



Mapped, edited, and published by the Geological Survey  
Control by USGS and USC&GS  
Topography by plane-table surveys 1926 and 1932  
Culture revision and field check 1952  
Polyconic projection. 1927 North American datum  
10,000-foot grid based on California coordinate system, zones 4 and 5  
Dashed land lines indicate approximate locations  
1000-meter Universal Transverse Mercator grid ticks,  
zone 11, shown in blue



ROAD CLASSIFICATION

Medium duty	1963	Light-duty
Unimproved dirt		



FOR SALE BY U.S. GEOLOGICAL SURVEY, DENVER, COLORADO 80225, OR RESTON, VIRGINIA 22092  
A FOLDER DESCRIBING TOPOGRAPHIC MAPS AND SYMBOLS IS AVAILABLE ON REQUEST

WHITE RIVER, CALIF.  
N3545-W11845/15  
1952  
AMS 2255 IV—SERIES V795

USGS  
Historical File  
Topographic Division

3400  
FEB 23 1978