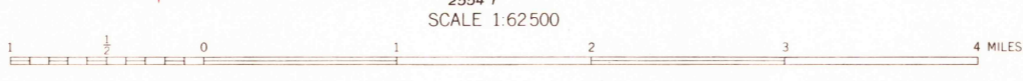
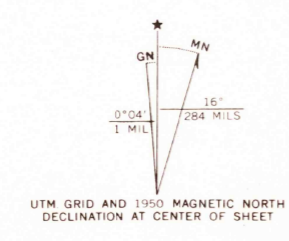


Mapped, edited, and published by the Geological Survey  
 Control by USGS and USC&GS  
 Topography from aerial photographs by multiplex methods  
 Aerial photographs taken 1946. Field check 1950  
 Polyconic projection. 1927 North American datum  
 10,000-foot grid based on California coordinate system,  
 zone 5  
 Unchecked elevations are shown in brown  
 1000-meter Universal Transverse Mercator grid ticks,  
 zone 11, shown in blue



CONTOUR INTERVAL 40 FEET  
 DOTTED LINES REPRESENT HALF INTERVAL CONTOURS  
 DATUM IS MEAN SEA LEVEL

THIS MAP COMPLIES WITH NATIONAL MAP ACCURACY STANDARDS  
 FOR SALE BY U. S. GEOLOGICAL SURVEY, DENVER 25, COLORADO OR WASHINGTON 25, D. C.  
 A FOLDER DESCRIBING TOPOGRAPHIC MAPS AND SYMBOLS IS AVAILABLE ON REQUEST

USGS  
 Historical File

ROAD CLASSIFICATION

Heavy-duty	4 LANE 16 LANE	Light-duty
Medium-duty	4 LANE 16 LANE	Unimproved dirt
U. S. Route		State Route

FILE COPY  
 TOPOGRAPHIC DIVISION

WINGATE PASS, CALIF.  
 N3530-W11700/15  
 1950  
 AMS 2555 II-SERIES V795

OCT 9 1964

4335