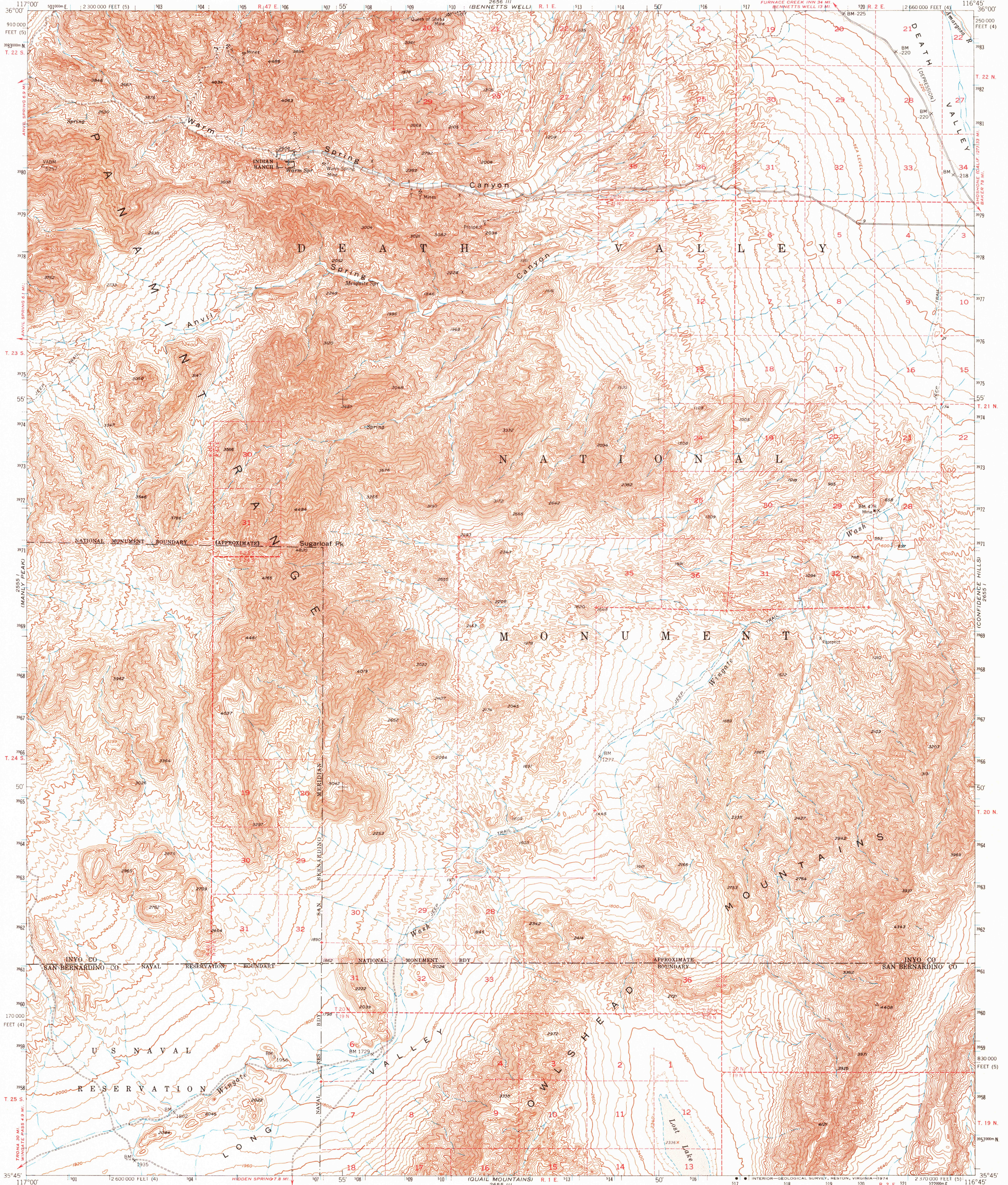


UNITED STATES
DEPARTMENT OF THE INTERIOR
GEOLOGICAL SURVEY

WINGATE WASH QUADRANGLE
CALIFORNIA
15 MINUTE SERIES (TOPOGRAPHIC)



Mapped, edited, and published by the Geological Survey
Control by USGS and USC&GS

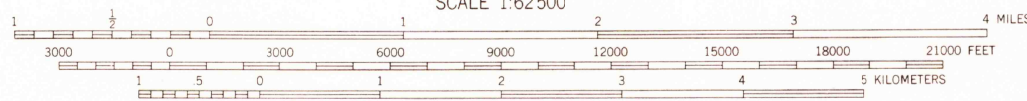
Topography from aerial photographs by photogrammetric methods
Aerial photographs taken 1948. Field check 1950

Polyconic projection. 1927 North American datum
10,000-foot grids based on California coordinate system, zones 4 and 5

1000-meter Universal Transverse Mercator grid ticks,
zone 11, shown in blue

Where omitted, land lines have not been established

UTM GRID AND 1950 MAGNETIC NORTH
DECLINATION AT CENTER OF SHEET



CONTOUR INTERVAL 40 FEET
DOTTED LINES REPRESENT 20-FOOT CONTOURS
NATIONAL GEODETIC VERTICAL DATUM OF 1929

THIS MAP COMPLIES WITH NATIONAL MAP ACCURACY STANDARDS
FOR SALE BY U.S. GEOLOGICAL SURVEY, DENVER, COLORADO 80225, OR RESTON, VIRGINIA 22092
A FOLDER DESCRIBING TOPOGRAPHIC MAPS AND SYMBOLS IS AVAILABLE ON REQUEST

ROAD CLASSIFICATION
Heavy-duty 4 LANE 6 LANE Light-duty
Medium-duty 4 LANE 6 LANE Unimproved dirt
U.S. Route State Route



USGS
Historical File
Topographic Division

WINGATE WASH, CALIF.
N3545—W11645/15

1950
MINOR CORRECTIONS MADE 1965
AMS 2655 IV—SERIES V795

AUG 1 1974

634